



CHANGSHA SOLLROC ENGINEERING EQUIPMENTS CO., LTD.
No.55 Jiucaiyuan, Wenyi road, Furong District, 410001, Changsha, Hunan, China
Tel: +86-731-8555-1632
Fax : +86-731-8555-1635
Email: info@sollroc.com
Website: www.sollroc.com
Publishing in May of 2019

DTH 潜孔钻具
drilling tools DTH hammer and bit
CHANGSHA SOLLROC ENGINEERING EQUIPMENTS CO.,LTD
长沙索尔洛克工程设备有限公司



公司简介 COMPANY PROFILE

Sollroc , with more 10 years of experience ,is one of the professional manufacturer and supplier of high performance rock drilling tools like: DTH hammers and bits, RC hammers and bits, DTH drill rods and top hammer drilling tools. Our tools are widely used in different drilling applications including mining, quarrying, water well drilling, geotechnical industries and etc.

Sollroc is specialized in designing, manufacturing and developing equipments and accessories for standard models as well as the special needs of clients and provides them with the best suggestions and solutions. We practice strict and stringent quality control during manufacturing and adhered to recognized and approved quality control systems. Each of our products follows the quality requirements and procedures to ensure finished products are durable and superior up to standard.

We are dedicated to offering our customers only premium quality products and services to enable them to achieve the highest possible productivity for their business and projects. If you are looking for the best, fastest and most productive drilling tools in the world, Sollroc should be your best choice and preference.

SOLLROC are offering high penetration and longevity DTH hammer from 2 inch to 12 inch and their spare parts. Our DTH hammer are widely used in Blasting hole for mines, quarry, thermal and water well drilling, overburden casing drilling etc.

Features:

* Made of quality steel with carburized treatment offer good wear resistance. The DTH bit can be interchangeable with well-known brand shank and helps customers to optimized inventory.

* Different bit design can completely satisfy the customization requirement and have adaptability to vary of rock conditions.

* The DTH bit can be interchangeable with well-known brand shank and helps customers to optimized inventory.

SOLLROC High pressure DTH hammer Applications

Page	Hammer Model	Can fit original bit shank	Applications
P02	HBR1	Bulroc BR1	Slope anchoring project.
P03	HBR2A	Bulroc BR2	Quarry drilling with low-mid air pressure.
P04	HBR3A	Bulroc BR3	Quarry drilling with low-mid air pressure.

			Blasting hole for mines	Slope anchoring, piling, refilling, etc project	Geothermal	Water well	Overburden
P05	HD35	IR DHD3.5				•	•
P06	HMP35	Mincon MD3.5				•	•
P07	HD35A	IR DHD3.5 (no footvalve)		•			
P08	HM30	Mission30		•			
P09	HC32A	COP32		•			
P10	HD45	DHD340A/COP44				•	•
P11	HQL40	QL40				•	•
P12	HSD4	SD4				•	•
P13	HMP4	DHD340A				•	•
P14	HM40	Mission40		•			
P15	HK4-D	DHD340A (no footvalve)	•				
P16	HF4-M	Mission40	•				
P17	HK5S-D	DHD340 (no footvalve)	•				
P18	HD55S	DHD350R (no footvalve)		•			
P19	HD55	DHD350R				•	•
P20	HQL50	QL50/COP54 Gold				•	•
P21	HSD5	SD5				•	•
P22	HD55A	DHD350R (no footvalve)		•			
P23	HM50	Mission 50		•			
P24	HQL50A	QL50 (no footvalve)		•			
P25	HK5-Q	QL50 (no footvalve)	•				
P26	HF5-M	Mission 50	•				

			Blasting hole for mines	Slope anchoring, piling, refilling, etc project	Geothermal	Water well	Overburden
P27	HK6S-Q	QI50 no footvalve	•				
P28	HD65	COP64/DHD360				•	•
P29	HSD6	SD6				•	•
P30	HQL60	QL60				•	•
P31	HD65A	COP64/DHD360 no footvalve		•			
P32	HQL60A	QL60 no footvalve		•			
P33	HM60	Mission 60		•			
P34	HW6-D	COP64/DHD360 no footvalve			•	•	
P35	HCP66	COP66	•				
P36	HK6-M	Mission 60	•				
P37	HMP6-Q	QL60 no footvalve		•			
P38	HF6-M	Mission 60	•				
P39	HK7-Q	QI60 (no footvalve)	•				
P40	HW7-Q	QL60 (no footvalve)			•	•	
P41	HD85	DHD380				•	•
P42	HSD8	SD8				•	•
P43	HQL80	QL80				•	•
P44	HQL80A	QL80 (no footvalve)		•			
P45	HD85A	DHD380 (no footvalve)		•			
P46	HK8-Q	QL80 (no footvalve)	•				
P47	HMP8-Q	QL80 no footvalve		•			
P48	HF8-M	Mission80	•				
P49	HK8-M	Mission80	•				
P50	HR9-Q	QI80				•	•
P51	HK9-Q	QL80 (no footvalve)	•				
P52	HSD10	SD10				•	•
P53	HN100	NUMA100				•	•
P54	HN100A	NUMA100 (no footvalve)				•	•
P55	HSD12	SD12				•	•
P56	HN125A	NUMA125 (no footvalve)		•			

S: Slim outer cylinder N: fit with bit no footvalve K: High penetration F: No inner cylinder Dwell: Design for water well drilling.

SOLLROC DTH hammer assortment:

Hammer model	Out diameter		Length		Weight		Can fit original bit shank	Air pressure		Hole range		Top sub thread	Page
	mm	inch	mm	inch	kg	lbs		bar	PSI	mm	inch		
Low-mid air pressure													
SC1-BR	54	2.1	708	27.9	8.73	19.2	BR1	7-17.5	102-254	60-76	2.4-3	RD40 Box	P02
SC2-BR	63	2.5	867.5	34.2	14.5	32.0	BR2	7-20	102-290	70-95	2.8-3.7	RD50 Box	P03
SC3-BR	82	3.2	873	34.4	24.6	54.2	BR3	7-20	102-290	90-110	3.5-4.3	API 2 3/8" REG	P04
3" hammer													
SC35-DHD	82	3.2	930	36.6	25	55.1	IR DHD3.5	7-25	102-363	90-110	3.5-4.3	API 2 3/8" REG	P05
SC35-MP	85	3.3	881	34.7	23.6	52.0	MP35	7-25	102-363	95-110	3.7-4.3	API 2 3/8" REG	P06
SC35N-DHD	82	3.2	888	35.0	25	55.1	DHD3.5 no footvalve	7-25	102-363	90-110	3.5-4.3	API 2 3/8" REG	P07
SC30-M	82	3.2	955	37.6	23.2	51.1	Mission 30	7-25	102-363	90-110	3.5-4.3	API 2 3/8" REG	P08
SC32-COP	82	3.2	923	36.3	22.4	49.4	COP32	7-25	102-363	90-110	3.5-4.3	API 2 3/8" REG	P09
4" hammer													
SC40-DHD	99	3.9	1032	40.6	41	90.4	DHD340A/COP44	10-25	145-363	110-130	4.3-5.1	API 2 3/8" REG	P10
SC40-QL	99	3.9	1103	43.4	43	94.8	QL40	10-25	145-363	110-130	4.3-5.1	API 2 3/8" REG	P11
SC40-SD	99	3.9	1083	42.6	41	90.4	SD4	10-25	145-363	110-130	4.3-5.1	API 2 3/8" REG	P12
SC40-MP	98	3.9	1030	40.6	42	92.6	DHD340A	10-25	145-363	110-130	4.3-5.1	API 2 3/8" REG	P13
SC40-M	99	3.9	1005	39.6	40	88.2	Mission 40	10-25	145-363	110-130	4.3-5.1	API 2 3/8" REG	P14
SC40K-DHD	100	3.9	927	36.5	37.4	82.5	DHD340A no footvalve	10-25	145-363	110-130	4.3-5.1	API 2 3/8" REG	P15
SC40F-M	100	3.9	985	38.8	39	86.0	Mission 40	10-25	145-363	110-130	4.3-5.1	API 2 3/8" REG	P16
5" hammer													
SC50NKS-DHD	110	4.3	858	33.8	43.6	96.1	DHD340A no footvalve	10-25	145-363	120-146	4.7-5.7	API 2 3/8" REG	P17
SC50NS-DHD	116	4.6	1110	43.7	56.3	124.1	DHD350R/COP54 no footvalve	10-25	145-363	127-146	5-5.7	API 2 3/8" REG API 3 1/2" REG	P18
SC50-DHD	125	4.9	1214	47.8	77	169.8	DHD350R/COP54	10-25	145-363	135-152	5.3-6	API 2 3/8" REG API 3 1/2" REG	P19
SC50-QL	125	4.9	1156	45.5	73	160.9	COP54 Gold / QL50	10-25	145-363	135-152	5.3-6	API 2 3/8" REG API 3 1/2" REG	P20
SC50-SD	125	4.9	1175	46.3	72.5	159.8	SD5	10-25	145-363	135-152	5.3-6	API 2 3/8" REG API 3 1/2" REG	P21
SC50N-DHD	125	4.9	1106	43.5	65.2	143.7	COP54/DHD350R no footvalve	10-25	145-363	135-152	5.3-6	API 2 3/8" REG API 3 1/2" REG	P22
SC50-M	125	4.9	1106	43.5	65.7	144.8	Mission 50	10-25	145-363	135-152	5.3-6	API 2 3/8" REG API 3 1/2" REG	P23
SC50N-QL	125	4.9	1090	42.9	67	147.7	QL50 no footvalve	10-25	145-363	135-152	5.3-6	API 2 3/8" REG API 3 1/2" REG	P24
SC50NK-QL	126	5.0	1024	40.3	66	145.5	QL50 no footvalve	10-25	145-363	135-152	5.3-6	API 2 3/8" REG API 3 1/2" REG	P25
SC50F-M	126.5	5.0	1020	40.2	65.8	145.1	Mission 50	10-25	145-363	135-152	5.3-6	API 2 3/8" REG	P26

Hammer model	Out diameter		Length		Weight		Can fit original bit shank	Air pressure		Hole range		Top sub thread	Page
	mm	inch	mm	inch	kg	lbs		bar	PSI	mm	inch		
6" hammer													
SC60NKS-QL	135	5.3	1058	41.7	71.3	157.2	QL50 no footvalve	10-25	145-363	146-165	5.7-6.5	API 3 1/2" REG	P27
SC60-DHD	148	5.8	1263	49.7	112	246.9	COP64/DHD360	10-25	145-363	165-190	6.5-7.5	API 3 1/2" REG	P28
SC60-SD	142	5.6	1261	49.6	100	220.5	SD6	10-25	145-363	152-190	6-7.5	API 3 1/2" REG	P29
SC60-QL	148	5.8	1212	47.7	95	209.4	QL60	10-25	145-363	165-190	6.5-7.48	API 3 1/2" REG	P30
SC60N-DHD	148	5.8	1238	48.7	112	246.9	COP64/DHD360 no footvalve	10-25	145-363	165-190	6.5-7.49	API 3 1/2" REG	P31
SC60N-QL	148	5.8	1183	46.6	92	202.8	QL60 no footvalve	10-25	145-363	165-190	6.5-7.50	API 3 1/2" REG	P32
SC60-M	148	5.8	1161	45.7	103.5	228.2	Mission 60	10-25	145-363	165-190	6.5-7.51	API 3 1/2" REG	P33
SC60-DWELL	148	5.8	1198	47.2	107	235.9	COP64/DHD360 no footvalve	10-25	145-363	165-190	6.5-7.52	API 3 1/2" REG	P34
SC66F-COP	146	5.7	896	35.3	68	149.9	COP66	10-25	145-363	165-190	6.5-7.53	API 3 1/2" REG	P35
SC60K-M	148	5.8	1106	43.5	94	207.2	Mission 60	10-25	145-363	165-190	6.5-7.53	API 3 1/2" REG	P36
SC60-MP	148	5.8	1205	47.4	109.5	241.4	QL60 no footvalve	10-25	145-363	165-190	6.5-7.55	API 3 1/2" REG	P37
SC60F-M	148	5.8	1030	40.6	86.5	190.7	Mission 60	10-25	145-363	165-190	6.5-7.54	API 3 1/2" REG	P38
7" hammer													
SC70K-QL	165	6.5	1191	46.9	131	288.8	QL60 no footvalve	10-25	145-363	178-203	7-8	API 3 1/2" REG	P39
SC70-DWELL	165	6.5	1191	46.9	131	288.8	QL60 no footvalve	10-25	145-363	178-203	7-8	API 3 1/2" REG	P40
8" hammer													
SC80-DHD	180	7.1	1492	58.7	188	414.5	DHD380/COP84	10-25	145-363	195-254	7.7-10	API 4 1/2" REG	P41
SC80-SD	180	7.1	1463	57.6	192	423.3	SD8	10-25	145-363	195-254	7.7-10	API 4 1/2" REG	P42
SC80-QL	185	7.3	1471	57.9	203	447.5	QL80	10-25	145-363	195-254	7.7-10	API 4 1/2" REG	P43
SC80N-QL	185	7.3	1330	52.4	182	401.2	QL80 no footvalve	10-30	145-363	195-254	7.7-10	API 4 1/2" REG	P44
SC80N-DHD	185	7.3	1359	53.5	186.5	411.2	COP84/DHD380 no footvalve	10-25	145-363	195-254	7.7-10	API 4 1/2" REG	P45
SC80K-QL	185	7.3	1340	52.8	176.6	389.3	QL80 no footvalve	10-25	145-363	195-254	7.7-10	API 4 1/2" REG	P46
SC80-MP	186	7.3	1444.5	56.9	206	454.2	QL80 no footvalve	10-25	145-363	195-254	7.7-10	API 4 1/2" REG	P47
SC80F-M	185	7.3	1307	51.5	184	405.7	Mission 80	10-25	145-363	195-254	7.7-10	API 4 1/2" REG	P48
SC80K-M	185	7.3	1345	53.0	186	410.1	Mission 80	10-25	145-363	195-254	7.7-10	API 4 1/2" REG	P49
9" hammer													
SC90-QL	203	8.0	1385	54.5	240	529.1	QL80	10-25	145-363	216-275	8.5-10.8	API 4 1/2" REG	P50
SC90NK-QL	203	8.0	1363	53.7	230	507.1	QL80 no footvalve	10-25	145-363	216-275	8.5-10.8	API 4 1/2" REG	P51
10" hammer													
SC100-SD	225	8.9	1413	55.6	303	668.0	SD10	10-25	145-363	254-305	10-12	API 4 1/2" REG API 5 1/2" REG	P52
SC100-NUMA	225	8.9	1441	56.7	308	679.0	NUMA100	10-25	145-363	254-305	10-12	API 4 1/2" REG API 5 1/2" REG	P53
SC100N-NUMA	225	8.9	1536	60.5	307.5	677.9	NUMA100 no footvalve	10-25	145-363	254-305	10-12	API 4 1/2" REG API 5 1/2" REG	P54
12" hammer													
SC120-SD	275	10.8	1680	66.1	526	1159.6	SD12	10-25	145-363	305-445	12-17.5	API 6 5/8" REG	P55
SC125-NUMA	275	10.8	1956	77.0	578	1274.3	NUMA125 no footvalve	10-25	145-363	304-445	12-17.5	API 6 5/8" REG	P56

S: Slim outer cylinder N: fit with bit no footvalve K: High penetration F: No inner cylinder Dwell: Design for water well drilling.

Face Shape Selection

Concave



Suitable for all-round rock formation, specifically for medium hard and homogeneous rock formations. Excellent control over hole deviation.

Convex



Suitable for soft to medium hard rock formation. Non abrasive rock formations. High penetration rate.

Flat face



Suitable for hard and abrasive rock formation. High penetration rates and resistance to steel wash.

Carbide button shape selection:



Spherical (domed)



Hemispherical

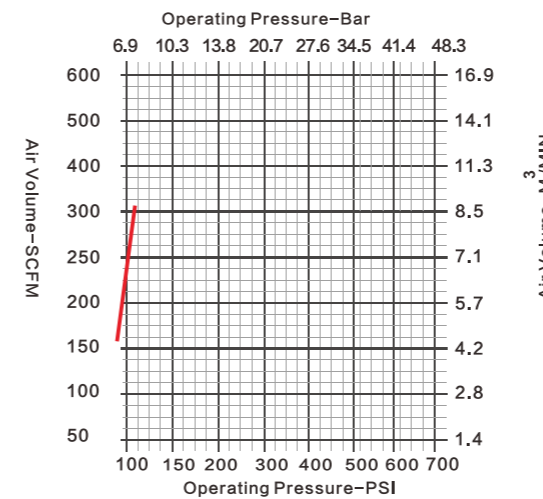
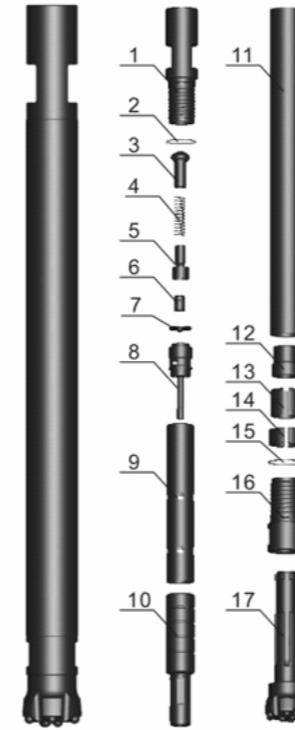


Parabolic (semi-ballistic)



Ballistic

SC1-BR Hammer & Bit



Hammer overview

Can fit original bit shank	BR1
Top Sub Thread	RD40 BOX
Length (less bit)	708 mm (27.9 in)
External diameter	54mm (2.13 in)
Weight (less bit)	8.7 kg (19.2 lbs)
Impact rate at 14bar	38 Hz
Hole range	60 mm-76 mm (2.36 in - 3 in)
Working pressure	7 - 17.5 bar (102 - 254 psi)
Speed recommended	30 -70 rpm
Pull force recommended	4 KN

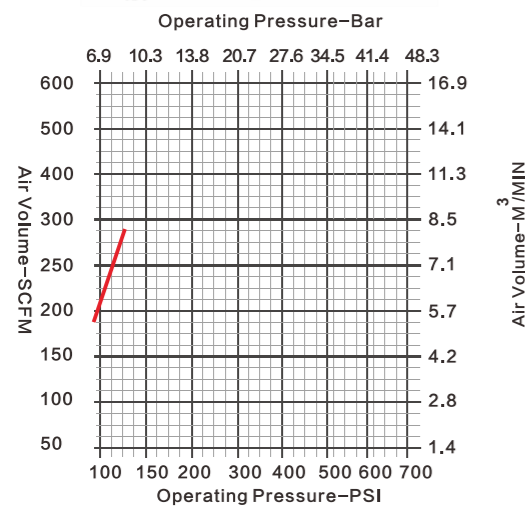
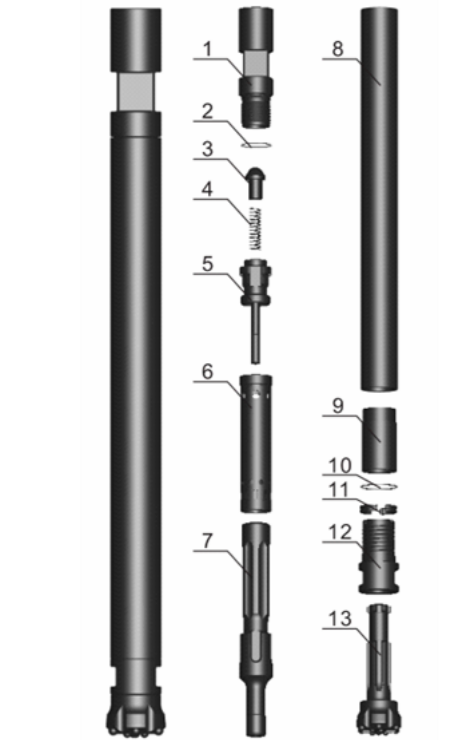
Parts List

Item	Description	Weight (kg)	Part number
1	Top Sub	1.6	SC1-BR-01
2	O Ring of Top Sub	0.005	SC1-BR-02
3	Check Valve	0.05	SC1-BR-03
4	Spring	0.05	SC1-BR-04
5	Air Distributor Sleeve	0.3	SC1-BR-05
6	Valve Pin	0.01	SC1-BR-06
7	Valve	0.01	SC1-BR-07
8	Air Distributor	0.6	SC1-BR-08
9	Internal Cylinder	0.7	SC1-BR-09
10	Piston	1	SC1-BR-10
11	External Cylinder	3.4	SC1-BR-11
12	Guide Sleeve	0.2	SC1-BR-12
13	Retaining Ring	0.1	SC1-BR-13
14	Stop Ring	0.1	SC1-BR-14
15	O Ring of Drive chuck	0.005	SC1-BR-15
16	Drive Chuck	0.65	SC1-BR-16
17	Drill Bit		

Bit specifications:

Diameter		Button configure Qty x dia.		Bit design	Weight (kg)	Part number
Metric	Inch	Gauge button	Front button			
60mm	2 3/8"	Φ9mm*6	Φ9mm*2, Φ9mm*2	Convex face	1.6	SC1-BR-60CV
64mm	2 1/2"	Φ10mm*6	Φ10mm*3	Flat face	1.7	SC1-BR-60FF
64mm	2 1/2"	Φ10mm*6	Φ10mm*2, Φ10mm*2	Convex face	1.7	SC1-BR-60CV
70mm	2 3/4"	Φ12mm*6	Φ10mm*2, Φ10mm*2	Convex face	1.9	SC1-BR-60CV
70mm	2 3/4"	Φ12mm*6	Φ10mm*4	Flat face	1.9	SC1-BR-60FF
76mm	3"	Φ12mm*6	Φ10mm*4	Flat face	2	SC1-BR-60FF

SC2-BR Hammer & Bit



Hammer overview

Can fit original bit shank	BR2
Top Sub Thread	RD50 BOX
Length (less bit)	867.5 mm (34.2 in)
External diameter	63mm (2.49 in)
Weight (less bit)	14.5 kg (32 lbs)
Impact rate at 17bar	35 Hz
Hole range	70 mm-95mm (2.76 in-3.7 in)
Working pressure	7 - 20 bar (102 - 290 psi)
Speed recommended	30 -70 rpm
Pull force recommended	5 KN

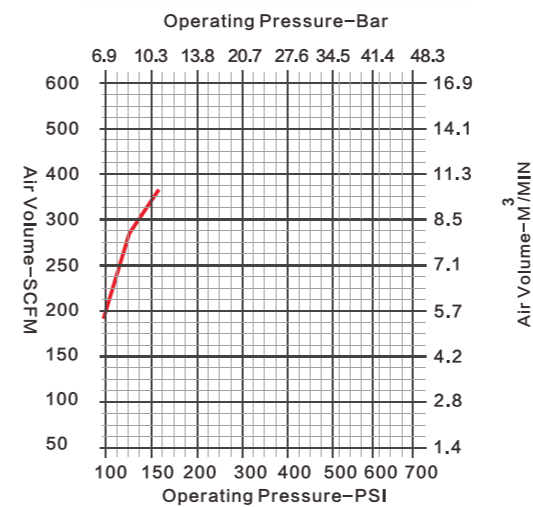
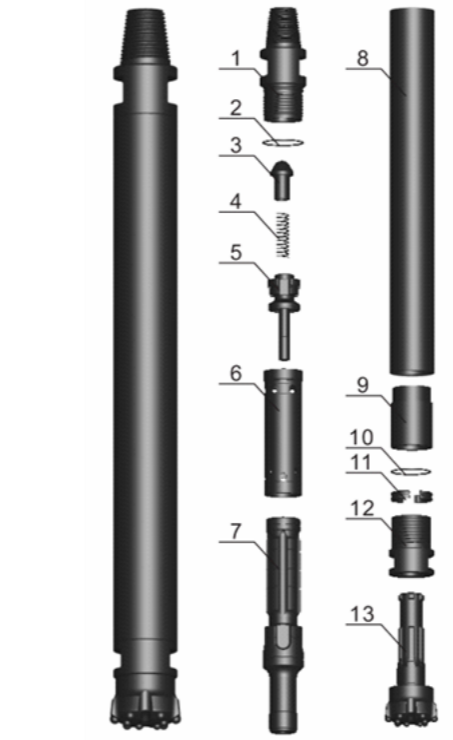
Parts List

Item	Description	Weight (kg)	Part number
1	Top Sub	2.95	SC2-BR-01
2	"O" Ring For Top Sub	0.005	SC2-BR-02
3	Check Valve	0.1	SC2-BR-03
4	Spring	0.05	SC2-BR-04
5	Air Distributor	0.4	SC2-BR-05
6	Internal Cylinder	0.9	SC2-BR-06
7	Piston	2.7	SC2-BR-07
8	External Cylinder	5.35	SC2-BR-08
9	Guided Sleeve	0.55	SC2-BR-09
10	"O" Ring of Stop Ring	0.005	SC2-BR-10
11	Stop Ring	0.1	SC2-BR-11
12	Drive Chuck	1.1	SC2-BR-12
13	Drill Bit		

Bit specifications:

Diameter		Button configure Qty x dia.		Bit design	Weight (kg)	Part number
Metric	Inch	Gauge button	Front button			
76mm	3"	Φ12mm*6	Φ10mm*5	Flat face	2.3	SC2-BR-76FF
76mm	3"	Φ13mm*6	Φ10mm*2, Φ11mm*2	Convex face	2.3	SC2-BR-76CV
80mm	3 1/8"	Φ13mm*6	Φ10mm*2, Φ11mm*3	Convex face	2.4	SC2-BR-80CV
90mm	3 1/2"	Φ13mm*6	Φ11mm*2, Φ11mm*4	Convex face	2.6	SC2-BR-90CV
90mm	3 1/2"	Φ13mm*6	Φ10mm*6	Flat face	2.6	SC2-BR-90FF
95mm	3 3/4"	Φ12mm*8	Φ12mm*4, Φ12mm*2	Concave face	2.8	SC2-BR-95CC

SC3-BR Hammer & Bit



Hammer overview

Can fit original bit shank	BR3
Top Sub Thread	API 2 3/8" REG
Length (less bit)	873 mm (34.4 in)
External diameter	82mm (3.23 in)
Weight (less bit)	24.6 kg (54.7 lbs)
Impact rate at 17bar	32Hz
Hole range	90mm-110mm (3.5 in-4.3 in)
Working pressure	7 - 20 bar (102 - 290 psi)
Speed recommended	30 -70 rpm
Pull force recommended	5 KN

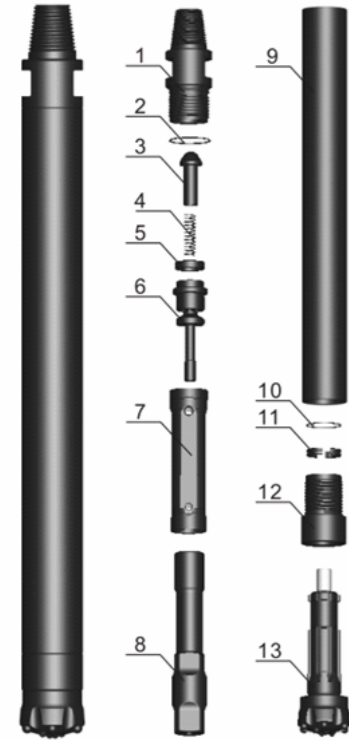
Parts List

Item	Description	Weight (kg)	Part number
1	Top Sub	4.4	SC3-BR-01
2	"O" Ring of Top Sub	0.005	SC3-BR-02
3	Check Valve	0.14	SC3-BR-03
4	Spring	0.01	SC3-BR-04
5	Air Distributor	0.8	SC3-BR-05
6	Internal Cylinder	1.4	SC3-BR-06
7	Piston	4.7	SC3-BR-07
8	External Cylinder	9.6	SC3-BR-08
9	Guided Sleeve	1	SC3-BR-09
10	"O" Ring of Stop Ring	0.005	SC3-BR-10
11	Stop Ring	0.15	SC3-BR-11
12	Drive Chuck	2.3	SC3-BR-12
13	Drill Bit		

Bit specifications:

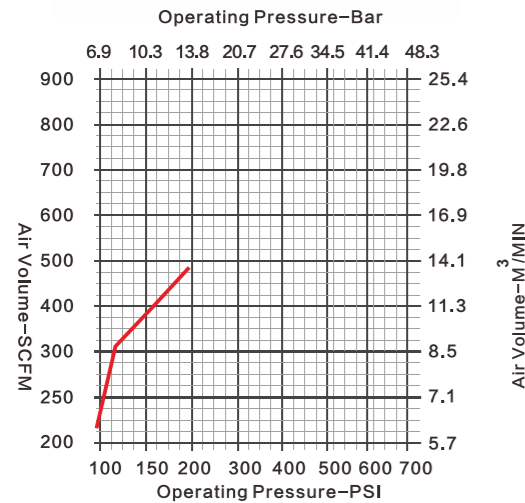
Diameter		Button configure Qty x dia.		Bit design	Weight (kg)	Part number
Metric	Inch	Gauge button	Front button			
90mm	3 1/2"	Φ14mm*6	Φ12mm*2, Φ13mm*2	Convex face	3.4	SC3-BR-90CV
90mm	3 1/2"	Φ14mm*6	Φ12mm*4	Flat face	3.4	SC3-BR-90FF
95mm	3 3/4"	Φ14mm*6	Φ13mm*2, Φ13mm*2	Convex face	3.5	SC3-BR-95CV
100mm	3 15/16"	Φ14mm*6	Φ13mm*2, Φ13mm*3	Convex face	3.7	SC3-BR-100CV
105mm	4 1/8"	Φ14mm*6	Φ13mm*2, Φ13mm*3	Convex face	3.9	SC3-BR-105CV
105mm	4 1/8"	Φ13mm*8	Φ12mm*6	Flat face	3.9	SC3-BR-105FF

SC35-DHD Hammer & Bit



Hammer overview	
Can fit original bit shank	IR DHD3.5
Top Sub Thread	API 2 3/8" REG
Length (less bit)	930 mm (36.7 in)
External diameter	82mm (3.23 in)
Weight (less bit)	25kg (55 lbs)
Impact rate at 17bar	28Hz
Hole range	90mm-110mm (3.55 in-4.4 in)
Working pressure	7 - 25 bar (102 - 362.5 psi)
Speed recommended	30 - 70 rpm
Pull force recommended	6 KN

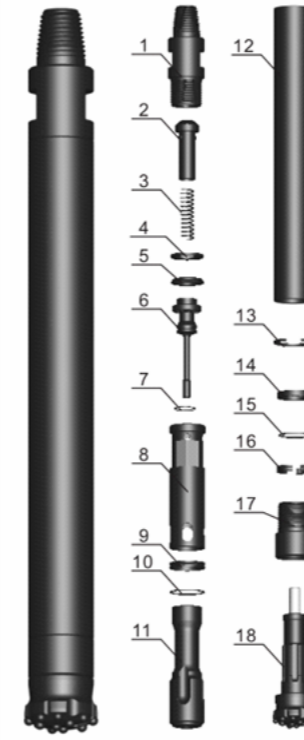
Parts List			
Item	Description	Weight (kg)	Part number
1	Top Sub	4.4	SC35-DHD-01
2	"O" Ring of Top Sub	0.005	SC35-DHD-02
3	Check Valve	0.2	SC35-DHD-03
4	Spring	0.02	SC35-DHD-04
5	Compression Buffer	0.02	SC35-DHD-05
6	Air Distributor	1.4	SC35-DHD-06
7	Internal Cylinder	1.5	SC35-DHD-07
8	Piston	5.6	SC35-DHD-08
9	External Cylinder	9.8	SC35-DHD-09
10	"O" Ring of Stop Ring	0.005	SC35-DHD-10
11	Stop Ring	0.15	SC35-DHD-11
12	Drive Chuck	1.9	SC35-DHD-12
13	Drill Bit		



Bit specifications:

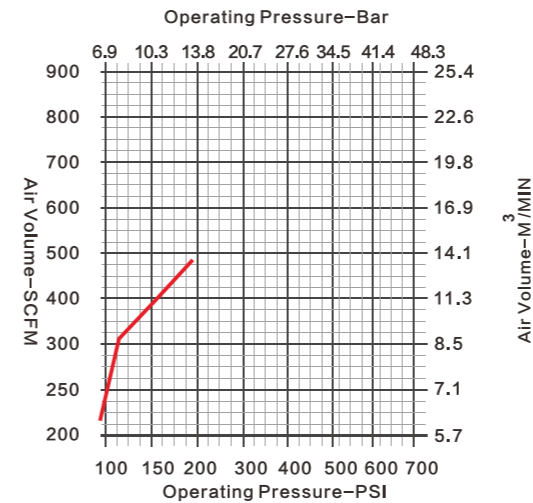
Diameter		Button configure Qty x dia.		Bit design	Weight (kg)	Part number
Metric	Inch	Gauge button	Front button			
90mm	3 1/2"	Φ14mm*6	Φ12mm*2, Φ13mm*2	Convex face	4.5	SC35-DHD-90CV
90mm	3 1/2"	Φ14mm*6	Φ12mm*4	Flat face	4.5	SC35-DHD-90FF
95mm	3 3/4"	Φ14mm*6	Φ13mm*2, Φ13mm*2	Convex face	4.6	SC35-DHD-95CV
100mm	3 15/16"	Φ14mm*6	Φ13mm*2, Φ13mm*3	Convex face	4.8	SC35-DHD-100CV
105mm	4 1/8"	Φ14mm*6	Φ13mm*2, Φ13mm*3	Convex face	5	SC35-DHD-105CV
105mm	4 1/8"	Φ13mm*8	Φ12mm*6	Flat face	5	SC35-DHD-105FF

SC35-MP Hammer & Bit



Hammer overview	
Can fit original bit shank	MIC MP35
Top Sub Thread	API 2 3/8" REG
Length (less bit)	881 mm (34.7 in)
External diameter	85mm (3.35 in)
Weight (less bit)	23.6kg (52 lbs)
Impact rate at 17bar	28Hz
Hole range	95mm-110mm (3.75 in-4.4 in)
Working pressure	7 - 25 bar (102 - 362.5 psi)
Speed recommended	30 - 70 rpm
Pull force recommended	6 KN

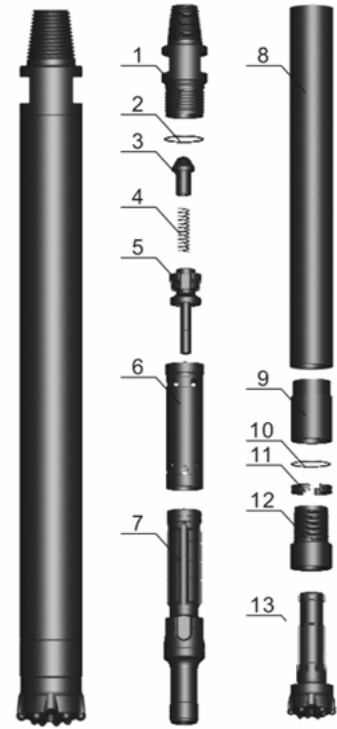
Parts List			
Item	Description	Weight (kg)	Part number
1	Top Sub	5.92	SC35-MP-01
2	"O" Ring of Top Sub	0.01	SC35-MP-02
3	Check Valve	0.01	SC35-MP-03
4	Spring	0.02	SC35-MP-04
5	Compression Buffer	0.01	SC35-MP-05
6	Air Distributor	0.95	SC35-MP-06
7	"O" Ring of Air Distributor	0.005	SC35-MP-07
8	Internal Cylinder	1.6	SC35-MP-08
9	Check Ring	0.03	SC35-MP-09
10	Check Ring of Internal Cylinder	0.005	SC35-MP-10
11	Piston	4.05	SC35-MP-11
12	External Cylinder	8.68	SC35-MP-12
13	Spring Collar	0.02	SC35-MP-13
14	Retainer Ring	0.09	SC35-MP-14
15	"O" Ring of Stop Ring	0.005	SC35-MP-15
16	Stop Ring	0.14	SC35-MP-16
17	Drive Chuck	1.99	SC35-MP-17
18	Drill Bit		



Bit specifications:

Diameter		Button configure Qty x dia.		Bit design	Weight (kg)	Part number
Metric	Inch	Gauge button	Front button			
95mm	3 3/4"	Φ13mm*8	Φ12mm*6	Flat face	5.4	SC35-MP-95FF
95mm	3 3/4"	Φ13mm*8	Φ13mm*2, Φ13mm*4	Convex face	5.3	SC35-MP-95CV
100mm	3 15/16"	Φ13mm*8	Φ13mm*2, Φ13mm*4	Convex face	5.5	SC35-MP-100CV
105mm	4 1/8"	Φ13mm*8	Φ13mm*2, Φ13mm*4	Convex face	5.7	SC35-MP-105CV
105mm	4 1/8"	Φ13mm*8	Φ13mm*6	Flat face	5.7	SC35-MP-105FF
110mm	4 5/16"	Φ14mm*8	Φ13mm*6	Flat face	6.1	SC35-MP-110FF

SC35N-DHD Hammer & Bit

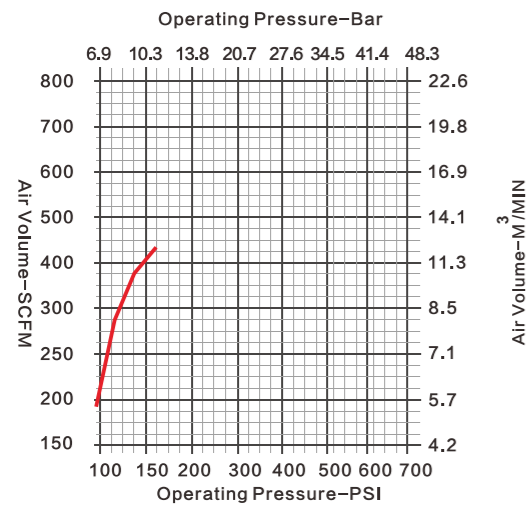


Hammer overview

Can fit original bit shank	IR DHD3.5 no footvalve
Top Sub Thread	API 2 3/8" REG
Length (less bit)	888 mm (35 in)
External diameter	82mm (3.23 in)
Weight (less bit)	25kg (55 lbs)
Impact rate at 17bar	32Hz
Hole range	90mm-110mm (3.55 in-4.4 in)
Working pressure	7 - 25 bar (102 - 362.5 psi)
Speed recommended	30 - 70 rpm
Pull force recommended	5 KN

Parts List

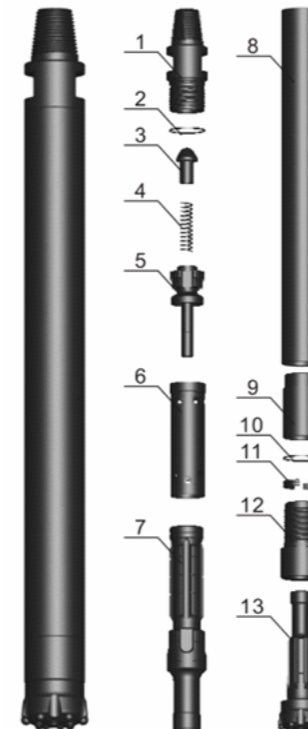
Item	Description	Weight (kg)	Part number
1	Top Sub	4.4	SC35N-DHD-01
2	"O" Ring of Top Sub	0.005	SC35N-DHD-02
3	Check Valve	0.2	SC35N-DHD-03
4	Spring	0.02	SC35N-DHD-04
5	Air Distributor	0.8	SC35N-DHD-05
6	Internal Cylinder	1.3	SC35N-DHD-06
7	Piston	4.7	SC35N-DHD-07
8	External Cylinder	9.9	SC35N-DHD-08
9	Guided Sleeve	1	SC35N-DHD-09
10	"O" Ring of Stop Ring	0.005	SC35N-DHD-10
11	Stop Ring	0.15	SC35N-DHD-11
12	Drive Chuck	1.9	SC35N-DHD-12
13	Drill Bit		



Bit specifications:

Diameter		Button configure Qty x dia.		Bit design	Weight (kg)	Part number
Metric	Inch	Gauge button	Front button			
90mm	3 1/2"	Φ14mm*6	Φ12mm*2, Φ13mm*2	Convex face	4.5	SC35N-DHD-90CV
90mm	3 1/2"	Φ14mm*6	Φ12mm*4	Flat face	4.5	SC35N-DHD-90FF
95mm	3 3/4"	Φ14mm*6	Φ13mm*2, Φ13mm*2	Convex face	4.6	SC35N-DHD-95CV
100mm	3 15/16"	Φ14mm*6	Φ13mm*2, Φ13mm*3	Convex face	4.8	SC35N-DHD-100CV
105mm	4 1/8"	Φ14mm*6	Φ13mm*2, Φ13mm*3	Convex face	5	SC35N-DHD-105CV
105mm	4 1/8"	Φ13mm*8	Φ12mm*6	Flat face	5	SC35N-DHD-105FF

SC30-M Hammer & Bit

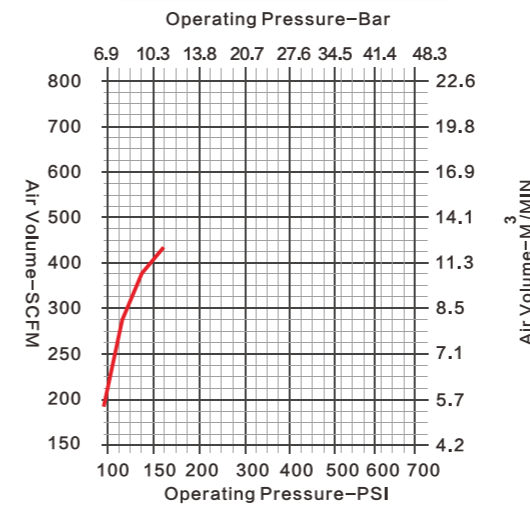


Hammer overview

Can fit original bit shank	MISSION 30
Top Sub Thread	API 2 3/8" REG
Length (less bit)	955 mm (37.6in)
External diameter	82mm (3.23 in)
Weight (less bit)	23.2kg (51.04 lbs)
Impact rate at 17bar	32Hz
Hole range	90mm-110mm (3.55 in-4.4 in)
Working pressure	7 - 25 bar (102 - 362.5 psi)
Speed recommended	30 - 70 rpm
Pull force recommended	5 KN

Parts List

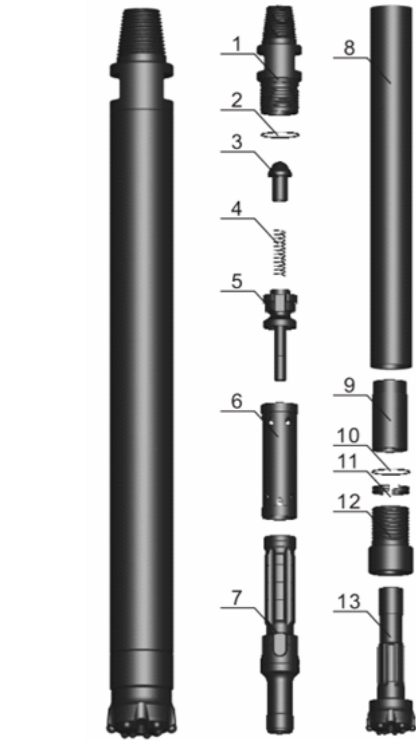
Item	Description	Weight (kg)	Part number
1	Top Sub	4.4	SC30-M-01
2	"O" Ring of Top Sub	0.005	SC30-M-02
3	Check Valve	0.14	SC30-M-03
4	Spring	0.01	SC30-M-04
5	Air Distributor	0.8	SC30-M-05
6	Internal Cylinder	1.4	SC30-M-06
7	Piston	4.7	SC30-M-07
8	External Cylinder	8.8	SC30-M-08
9	Guided Sleeve	1.2	SC30-M-09
10	"O" Ring of Stop Ring	0.005	SC30-M-10
11	Stop Ring	0.22	SC30-M-11
12	Drive Chuck	2.3	SC30-M-12
13	Drill Bit		



Bit specifications:

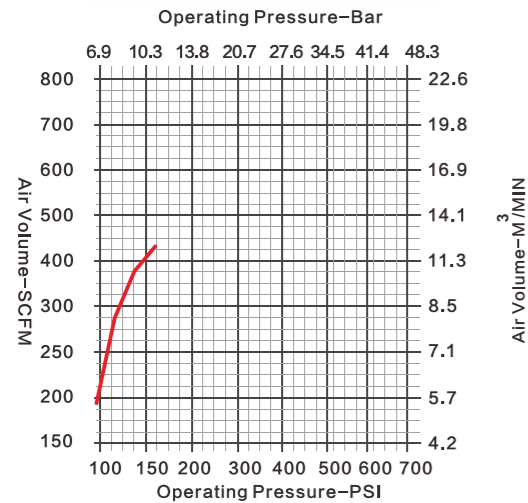
Diameter		Button configure Qty x dia.		Bit design	Weight (kg)	Part number
Metric	Inch	Gauge button	Front button			
90mm	3 1/2"	Φ14mm*6	Φ12mm*2, Φ13mm*2	Convex face	4.5	SC30-M-90CV
90mm	3 1/2"	Φ14mm*6	Φ12mm*4	Flat face	4.5	SC30-M-90FF
95mm	3 3/4"	Φ14mm*6	Φ13mm*2, Φ13mm*2	Convex face	4.6	SC30-M-95CV
100mm	3 15/16"	Φ14mm*6	Φ13mm*2, Φ13mm*3	Convex face	4.8	SC30-M-100CV
105mm	4 1/8"	Φ14mm*6	Φ13mm*2, Φ13mm*3	Convex face	5	SC30-M-105CV
105mm	4 1/8"	Φ13mm*8	Φ12mm*6	Flat face	5	SC30-M-105FF

SC32-COP Hammer & Bit



Hammer overview	
Can fit original bit shank	COP32
Top Sub Thread	API 2 3/8" REG
Length (less bit)	923 mm (36.34in)
External diameter	82mm (3.23 in)
Weight (less bit)	22.4kg (49.3 lbs)
Impact rate at 17bar	32Hz
Hole range	90mm-110mm (3.55 in-4.4 in)
Working pressure	7 - 25 bar (102 - 362.5 psi)
Speed recommended	30 -70 rpm
Pull force recommended	5 KN

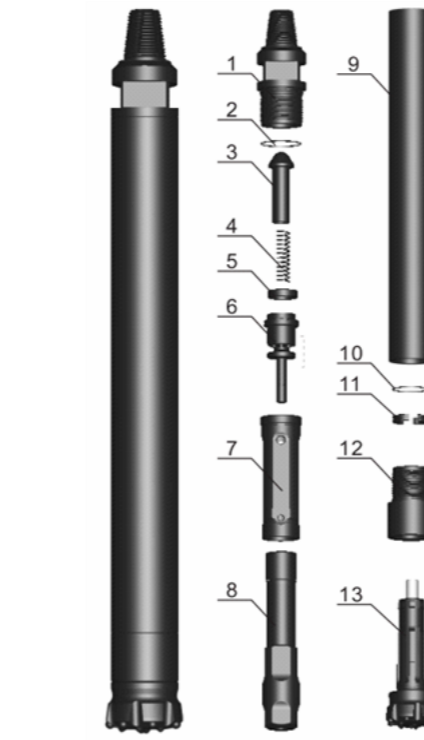
Parts List			
Item	Description	Weight (kg)	Part number
1	Top Sub	4.4	SC32-COP-01
2	"O" Ring of Top Sub	0.005	SC32-COP-02
3	Check Valve	0.14	SC32-COP-03
4	Spring	0.01	SC32-COP-04
5	Air Distributor	0.8	SC32-COP-05
6	Internal Cylinder	1.4	SC32-COP-06
7	Piston	4.7	SC32-COP-07
8	External Cylinder	8	SC32-COP-08
9	Guided Sleeve	0.6	SC32-COP-09
10	"O" Ring of Stop Ring	0.005	SC32-COP-10
11	Stop Ring	0.15	SC32-COP-11
12	Drive Chuck	2.2	SC32-COP-12
13	Drill Bit		



Bit specifications:

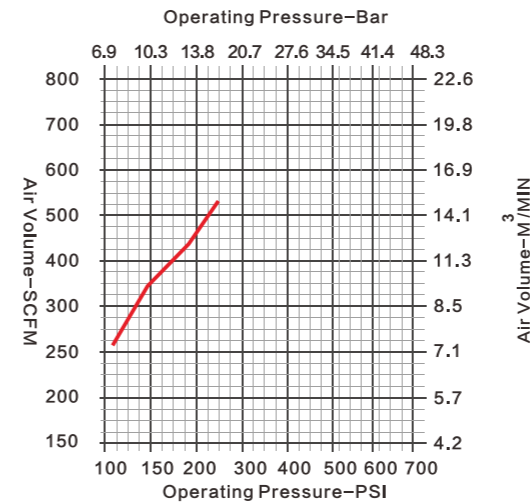
Diameter		Button configure Qty x dia.		Bit design	Weight (kg)	Part number
Metric	Inch	Gauge button	Front button			
90mm	3 1/2"	Φ14mm*6	Φ12mm*2, Φ13mm*2	Convex face	4.3	SC32-COP-90CV
90mm	3 1/2"	Φ14mm*6	Φ12mm*4	Flat face	4.3	SC32-COP-90FF
95mm	3 3/4"	Φ14mm*6	Φ13mm*2, Φ13mm*2	Convex face	4.4	SC32-COP-95CV
100mm	3 15/16"	Φ14mm*6	Φ13mm*2, Φ13mm*3	Convex face	4.6	SC32-COP-100CV
105mm	4 1/8"	Φ14mm*6	Φ13mm*2, Φ13mm*3	Convex face	4.8	SC32-COP-105CV
105mm	4 1/8"	Φ13mm*8	Φ12mm*6	Flat face	4.8	SC32-COP-105FF

SC40-DHD Hammer & Bit



Hammer overview	
Can fit original bit shank	COP44/DHD340
Top Sub Thread	API 2 3/8" REG
Length (less bit)	1032 mm (40.63in)
External diameter	99mm (3.90 in)
Weight (less bit)	40.7kg (89.54 lbs)
Impact rate at 17bar	28HZ
Hole range	110mm-130mm (4.4 in-5.12 in)
Working pressure	10 - 25 bar (145 - 362.5 psi)
Speed recommended	30 -70 rpm
Pull force recommended	8 KN

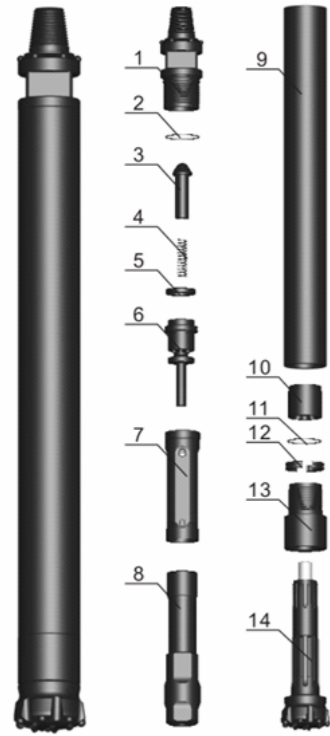
Parts List			
Item	Description	Weight (kg)	Part number
1	Top Sub	7	SC40-DHD-01
2	"O" Ring of Top Sub	0.005	SC40-DHD-02
3	Check Valve	0.42	SC40-DHD-03
4	Spring	0.04	SC40-DHD-04
5	Compression Buffer	0.04	SC40-DHD-05
6	Air Distributor	2.2	SC40-DHD-06
7	Internal Cylinder	2.3	SC40-DHD-07
8	Piston	9	SC40-DHD-08
9	External Cylinder	16	SC40-DHD-09
10	"O" Ring of Stop Ring	0.005	SC40-DHD-10
11	Stop Ring	0.2	SC40-DHD-11
12	Drive Chuck	3.6	SC40-DHD-12
13	Drill Bit		



Bit specifications:

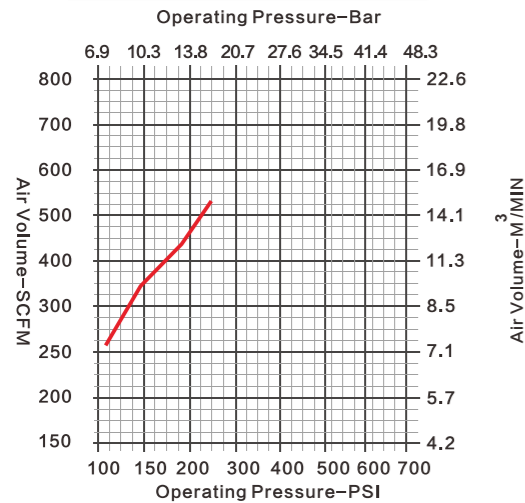
Diameter		Button configure Qty x dia.		Bit design	Weight (kg)	Part number
Metric	Inch	Gauge button	Front button			
115mm	4 1/2"	Φ14mm*7	Φ14mm*2, Φ14mm*4	Convex face	8.2	SC40-DHD-115CV
115mm	4 1/2"	Φ16mm*7	Φ14mm*2, Φ14mm*4	Convex face	8.2	SC40-DHD-115CVX
115mm	4 1/2"	Φ14mm*8	Φ14mm*2, Φ14mm*4	Convex face	8.2	SC40-DHD-115CVXX
125mm	4 15/16"	Φ14mm*8	Φ13mm*3, Φ14mm*4	Convex face	8.8	SC40-DHD-125CV
127mm	5"	Φ14mm*8	Φ13mm*7	Flat face	8.9	SC40-DHD-127FF
130mm	5 1/8"	Φ14mm*8	Φ14mm*7	Flat face	9.1	SC40-DHD-130FF

SC40-QL Hammer & Bit



Hammer overview	
Can fit original bit shank	QL40
Top Sub Thread	API 2 3/8" REG
Length (less bit)	1103mm (43.5in)
External diameter	99mm(3.9in)
Weight (less bit)	42.6 kg (93.72 lbs)
Impact rate at 17bar(reference)	28 Hz
Hole range	110mm-130mm (4.4 in-5.12 in)
Working pressure	10 - 25 bar (145 - 362.5 psi)
Speed recommended	30-70rpm
Pull force recommended	8.0 KN

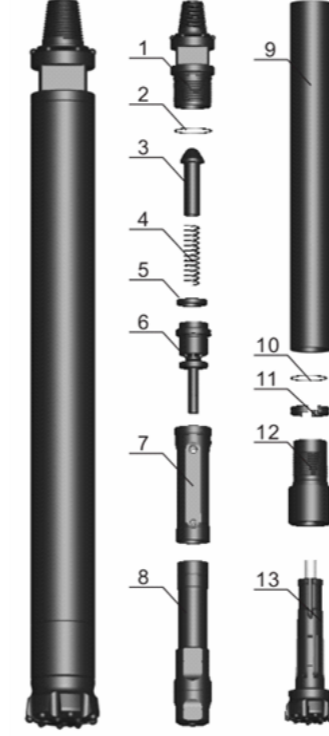
Parts List			
Item	Description	Weight (kg)	Part number
1	Top Sub	7.0	SC40-QL-01
2	O Ring Of Top Sub	0.005	SC40-QL-02
3	Check Valve	0.42	SC40-QL-03
4	Spring	0.04	SC40-QL-04
5	Compression Buffer	0.04	SC40-QL-05
6	Air Distributor	2.20	SC40-QL-06
7	Internal Cylinder	2.3	SC40-QL-07
8	Piston	8.8	SC40-QL-08
9	External Cylinder	17.50	SC40-QL-09
10	Guide Sleeve	0.80	SC40-QL-10
11	O Ring Of Stop Ring	0.005	SC40-QL-11
12	Stop Ring	0.30	SC40-QL-12
13	Drive Chuck	3.30	SC40-QL-13
14	Drill Bit		



Bit specifications:

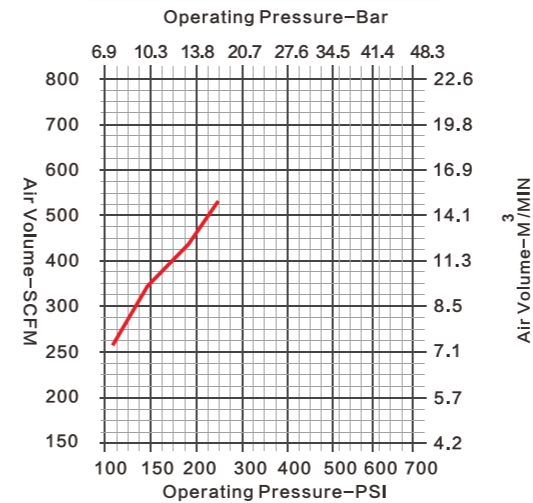
Diameter		Button configure Qty x dia.		Bit design	Weight (kg)	Part number
Metric	Inch	Gauge button	Front button			
115mm	4 1/2"	Φ14mm*7	Φ14mm*2, Φ14mm*4	Convex face	9.6	SC40-QL-115CV
115mm	4 1/2"	Φ16mm*7	Φ14mm*2, Φ14mm*4	Convex face	9.6	SC40-QL-115CVX
115mm	4 1/2"	Φ14mm*8	Φ14mm*2, Φ14mm*4	Convex face	9.6	SC40-QL-115CVXX
125mm	4 15/16"	Φ14mm*8	Φ13mm*3, Φ14mm*4	Convex face	10.2	SC40-QL-125CV
127mm	5"	Φ14mm*8	Φ13mm*7	Flat face	10.3	SC40-QL-127FF
130mm	5 1/8"	Φ14mm*8	Φ14mm*7	Flat face	10.5	SC40-QL-130FF

SC40-SD Hammer & Bit



Hammer overview	
Can fit original bit shank	SD4
Top Sub Thread	API 2 3/8" REG
Length (less bit)	1083mm(42.7in)
External diameter	99mm(3.9in)
Weight (less bit)	40.9 kg (90 lbs)
Impact rate at 17bar	28 Hz
Hole range	110mm-130mm (4.4 in-5.12 in)
Working pressure	10 - 25 bar (145 - 362.5 psi)
Speed recommended	30-70 rpm
Pull force recommended	8.0 KN

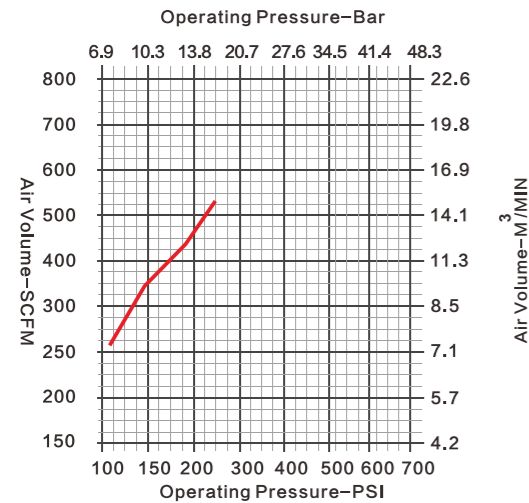
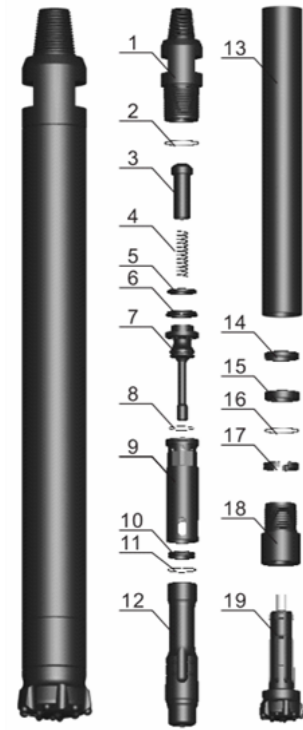
Parts List			
Item	Description	Weight (kg)	Part number
1	Top Sub	7.0	SC40-SD-01
2	O Ring Of Top Sub	0.005	SC40-SD-02
3	Check Valve	0.42	SC40-SD-03
4	Spring	0.04	SC40-SD-04
5	Compression Buffer	0.04	SC40-SD-05
6	Air Distributor	2.20	SC40-SD-06
7	Internal Cylinder	2.3	SC40-SD-07
8	Piston	9.0	SC40-SD-08
9	External Cylinder	15.60	SC40-SD-09
10	O Ring Of Stop Ring	0.005	SC40-SD-10
11	Stop Ring	0.20	SC40-SD-11
12	Drive Chuck	4.10	SC40-SD-12
13	Drill Bit		



Bit specifications:

Diameter		Button configure Qty x dia.		Bit design	Weight (kg)	Part number
Metric	Inch	Gauge button	Front button			
115mm	4 1/2"	Φ14mm*7	Φ14mm*2, Φ14mm*4	Convex face	9	SC40-SD-115CV
115mm	4 1/2"	Φ16mm*7	Φ14mm*2, Φ14mm*4	Convex face	9.0	SC40-SD-115CVX
115mm	4 1/2"	Φ14mm*8	Φ14mm*2, Φ14mm*4	Convex face	9	SC40-SD-115CVXX
125mm	4 15/16"	Φ14mm*8	Φ13mm*3, Φ14mm*4	Convex face	9.6	SC40-SD-125CV
127mm	5"	Φ14mm*8	Φ13mm*7	Flat face	9.7	SC40-SD-127FF
130mm	5 1/8"	Φ14mm*8	Φ14mm*7	Flat face	9.9	SC40-SD-130FF

SC40-MP Hammer & Bit



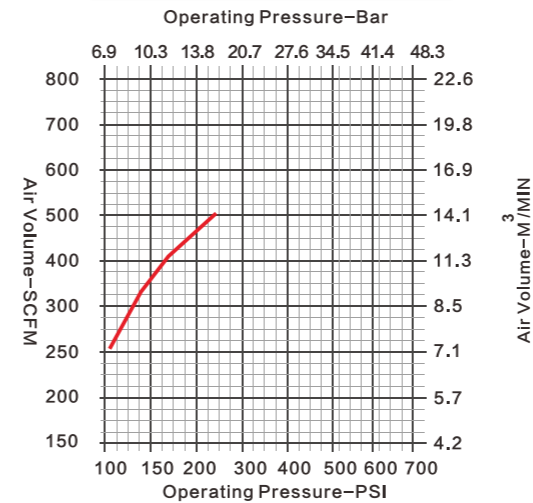
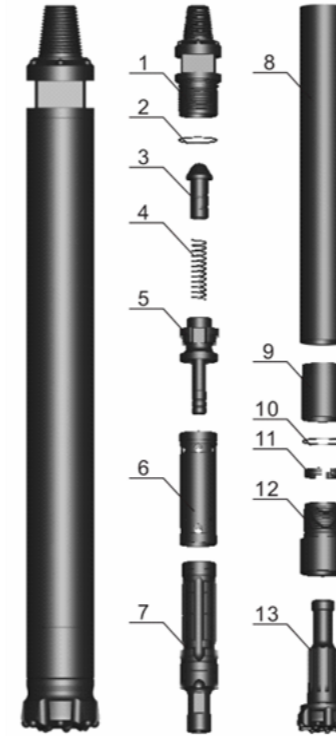
Hammer overview	
Can fit original bit shank	DHD340A
Top Sub Thread	API 2 3/8" REG
Length (less bit)	1030mm(40.6in)
External diameter	98mm(3.86in)
Weight (less bit)	42.0 kg (92.4 lbs)
Impact rate at 17bar	28 Hz
Hole range	110mm-130mm (4.4 in-5.12 in)
Working pressure	10 - 25 bar (145 - 362.5 psi)
Speed recommended	30-70 rpm
Pull force recommended	8.0 KN

Parts List			
Item	Description	Weight (kg)	Part number
1	Top Sub	8.6	SC40-MP-01
2	O Ring Of Top Sub	0.005	SC40-MP-02
3	Check Valve	0.30	SC40-MP-03
4	Spring	0.05	SC40-MP-04
5	Backup Ring	0.15	SC40-MP-05
6	Compression Buffer	0.10	SC40-MP-06
7	Air Distributor	6.15	SC40-MP-07
8	O Ring of Air Distributor	0.005	SC40-MP-08
9	Internal Cylinder	2.04	SC40-MP-09
10	Check Ring	0.10	SC40-MP-10
11	Check Ring for Internal Cylinder	0.005	SC40-MP-11
12	Piston	7.40	SC40-MP-12
13	External Cylinder	12.60	SC40-MP-13
14	Spring Collar	0.05	SC40-MP-14
15	Retainer Ring	0.18	SC40-MP-15
16	O Ring Of Stop Ring	0.005	SC40-MP-16
17	Stop Ring	0.14	SC40-MP-17
18	Drive Chuck	4.18	SC40-MP-18
19	Drill Bit		

Bit specifications:

Diameter		Button configure Qty x dia.		Bit design	Weight (kg)	Part number
Metric	Inch	Gauge button	Front button			
115mm	4 1/2"	Φ14mm*7	Φ14mm*2, Φ14mm*4	Convex face	8.1	SC40-MP-115CV
115mm	4 1/2"	Φ16mm*7	Φ14mm*2, Φ14mm*4	Convex face	8.1	SC40-MP-115CVX
115mm	4 1/2"	Φ14mm*8	Φ14mm*2, Φ14mm*4	Convex face	8.1	SC40-MP-115CVXX
125mm	4 15/16"	Φ14mm*8	Φ13mm*3, Φ14mm*4	Convex face	8.7	SC40-MP-125CV
127mm	5"	Φ14mm*8	Φ13mm*7	Flat face	8.8	SC40-MP-127FF
130mm	5 1/8"	Φ14mm*8	Φ14mm*7	Flat face	9	SC40-MP-130FF

SC40-M Hammer & Bit



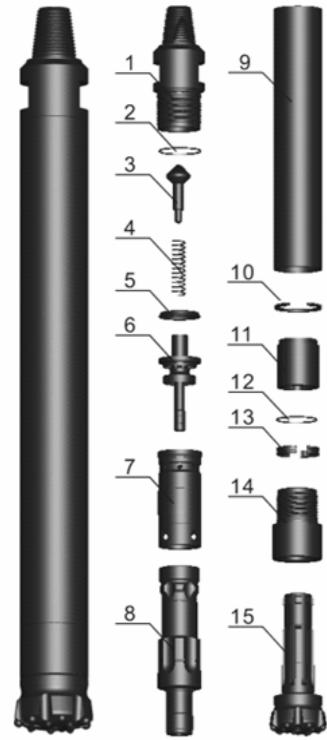
Hammer overview	
Can fit original bit shank	MISSION40
Top Sub Thread	API 2 3/8" REG
Length (less bit)	1005mm(39.6in)
External diameter	99mm(3.9in)
Weight (less bit)	40 kg (88lbs)
Impact rate at 17bar	30 Hz
Hole range	110mm-130mm (4.4 in-5.12 in)
Working pressure	10 - 25 bar (145 - 362.5 psi)
Speed recommended	30-70 rpm
Pull force recommended	7.5 KN

Parts List			
Item	Description	Weight (kg)	Part number
1	Top Sub	7.0	SC40-M-01
2	O Ring Of Top Sub	0.005	SC40-M-02
3	Check Valve	0.42	SC40-M-03
4	Spring	0.04	SC40-M-04
5	Air Distributor	1.20	SC40-M-05
6	Internal Cylinder	1.80	SC40-M-06
7	Piston	8.5	SC40-M-07
8	External Cylinder	14.7	SC40-M-08
9	Guide Sleeve	1.80	SC40-M-09
10	O Ring Of Stop Ring	0.005	SC40-M-10
11	Stop Ring	0.30	SC40-M-11
12	Drive Chuck	3.80	SC40-M-12
13	Drill Bit		

Bit specifications:

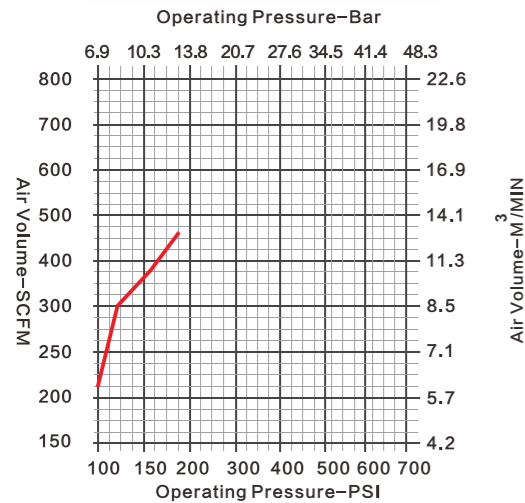
Diameter		Button configure Qty x dia.		Bit design	Weight (kg)	Part number
Metric	Inch	Gauge button	Front button			
115mm	4 1/2"	Φ14mm*7	Φ14mm*2, Φ14mm*4	Convex face	8.1	SC40-M-115CV
115mm	4 1/2"	Φ16mm*7	Φ14mm*2, Φ14mm*4	Convex face	8.1	SC40-M-115CVX
115mm	4 1/2"	Φ14mm*8	Φ14mm*2, Φ14mm*4	Convex face	8.1	SC40-M-115CVXX
125mm	4 15/16"	Φ14mm*8	Φ13mm*3, Φ14mm*4	Convex face	8.7	SC40-M-125CV
127mm	5"	Φ14mm*8	Φ13mm*7	Flat face	8.8	SC40-M-127FF
130mm	5 1/8"	Φ14mm*8	Φ14mm*7	Flat face	9	SC40-M-130FF

SC40K-DHD Hammer & Bit



Hammer overview	
Can fit original bit shank	DHD340A (no footvalve)
Top Sub Thread	API 2 3/8" REG
Length (less bit)	927mm(36.5in)
External diameter	100mm(3.94in)
Weight (less bit)	37.4 kg (83lbs)
Impact rate at 17bar	35 Hz
Hole range	110mm-130mm (4.4 in-5.12 in)
Working pressure	10 - 25 bar (145 - 362.5 psi)
Speed recommended	30-70 rpm
Pull force recommended	7.0 KN

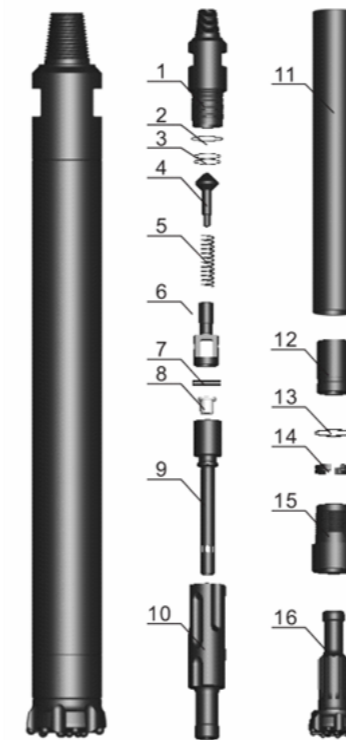
Parts List			
Item	Description	Weight (kg)	Part number
1	Top Sub	6.55	SC40K-DHD-01
2	O Ring Of Top Sub	0.005	SC40K-DHD-02
3	Check Valve	0.20	SC40K-DHD-03
4	Spring	0.10	SC40K-DHD-04
5	Compression Buffer	0.20	SC40K-DHD-05
6	Air Distributor	1.40	SC40K-DHD-06
7	Internal Cylinder	1.35	SC40K-DHD-07
8	Piston	7.85	SC40K-DHD-08
9	External Cylinder	13.25	SC40K-DHD-09
10	Retainer Ring	0.20	SC40K-DHD-10
11	Guide Sleeve	1.85	SC40K-DHD-11
12	O Ring Of Stop Ring	0.005	SC40K-DHD-12
13	Stop Ring	0.25	SC40K-DHD-13
14	Drive Chuck	3.95	SC40K-DHD-14
15	Drill Bit		



Bit specifications:

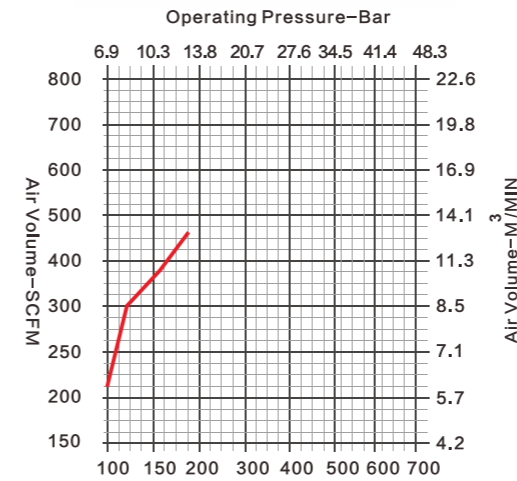
Diameter		Button configure Qty x dia.		Bit design	Weight (kg)	Part number
Metric	Inch	Gauge button	Front button			
115mm	4 1/2"	Φ14mm*7	Φ14mm*2, Φ14mm*4	Convex face	8.2	SC40K-DHD-115CV
115mm	4 1/2"	Φ16mm*7	Φ14mm*2, Φ14mm*4	Convex face	8.2	SC40K-DHD-115CVX
115mm	4 1/2"	Φ14mm*8	Φ14mm*2, Φ14mm*4	Convex face	8.2	SC40K-DHD-115CVXX
125mm	4 15/16"	Φ14mm*8	Φ13mm*3, Φ14mm*4	Convex face	8.8	SC40K-DHD-125CV
127mm	5"	Φ14mm*8	Φ13mm*7	Flat face	8.9	SC40K-DHD-127FF
130mm	5 1/8"	Φ14mm*8	Φ14mm*7	Flat face	9.1	SC40K-DHD-130FF

SC40F-M Hammer & Bit



Hammer overview	
Can fit original bit shank	MISSION40
Top Sub Thread	API 2 3/8" REG
Length (less bit)	985mm(38.8in)
External diameter	100mm(3.94in)
Weight (less bit)	39kg (86lbs)
Impact rate at 17bar	35 Hz
Hole range	110mm-130mm (4.4 in-5.12 in)
Working pressure	10 - 25 bar (145 - 362.5 psi)
Speed recommended	30-70 rpm
Pull force recommended	7.0 KN

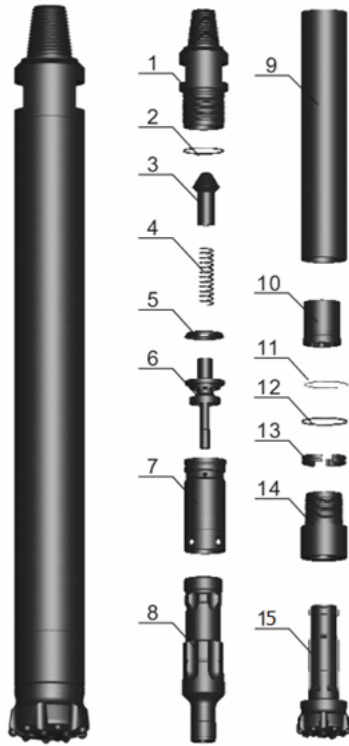
Parts List			
Item	Description	Weight (kg)	Part number
1	Top Sub	8.9	SC40F-M-01
2	O Ring Of Top Sub(Outer)	0.005	SC40F-M-02
3	O Ring Of Top Sub(Inner)	0.005	SC40F-M-03
4	Check Valve	0.01	SC40F-M-04
5	Spring	0.02	SC40F-M-05
6	Base of Check Valve	0.27	SC40F-M-06
7	Pin	0.01	SC40F-M-07
8	Plunger	0.005	SC40F-M-08
9	Air Distributor	0.67	SC40F-M-09
10	Piston	7.32	SC40F-M-10
11	External Cylinder	15.7	SC40F-M-11
12	Guide Sleeve	2.56	SC40F-M-12
13	O Ring Of Stop Ring	0.005	SC40F-M-13
14	Stop Ring	0.25	SC40F-M-14
15	Drive Chuck	3.28	SC40F-M-15
16	Drill Bit		



Bit specifications:

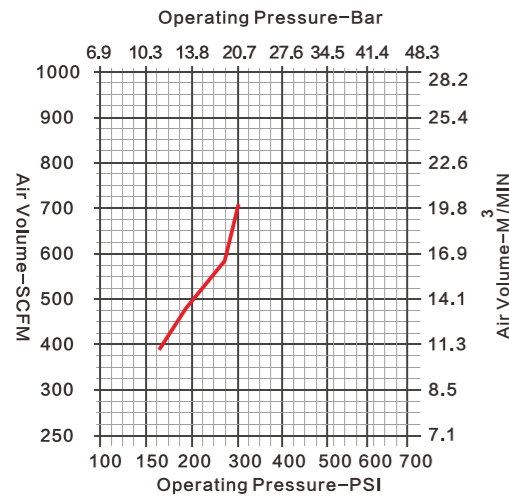
Diameter		Button configure Qty x dia.		Bit design	Weight (kg)	Part number
Metric	Inch	Gauge button	Front button			
115mm	4 1/2"	Φ14mm*7	Φ14mm*2, Φ14mm*4	Convex face	8.1	SC40F-M-115CV
115mm	4 1/2"	Φ16mm*7	Φ14mm*2, Φ14mm*4	Convex face	8.1	SC40F-M-115CVX
115mm	4 1/2"	Φ14mm*8	Φ14mm*2, Φ14mm*4	Convex face	8.1	SC40F-M-115CVXX
125mm	4 15/16"	Φ14mm*8	Φ13mm*3, Φ14mm*4	Convex face	8.7	SC40F-M-125CV
127mm	5"	Φ14mm*8	Φ13mm*7	Flat face	8.8	SC40F-M-127FF
130mm	5 1/8"	Φ14mm*8	Φ14mm*7	Flat face	9	SC40F-M-130FF

SC50NKS-DHD Hammer & Bit



Hammer overview	
Can fit original bit shank	DHD340A (no footvalve)
Top Sub Thread	API 2 3/8" REG
Length (less bit)	858mm(33.8in)
External diameter	110mm(4.34in)
Weight (less bit)	43.6kg (96lbs)
Impact rate at 17bar	35 Hz
Hole range	120mm-146mm (4.7in - 5.7in)
Working pressure	10 - 25 bar (145 - 362.5 psi)
Speed recommended	30-60 rpm
Pull force recommended	9.0 KN

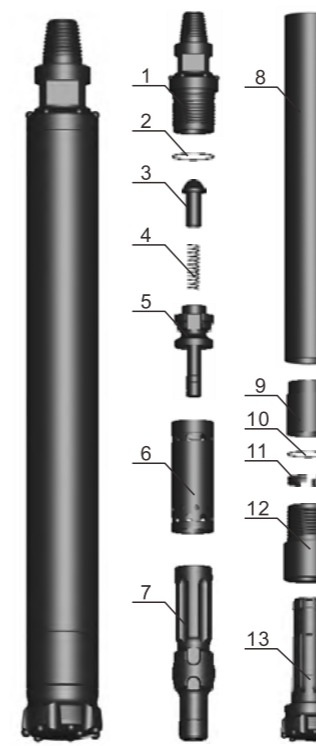
Parts List			
Item	Description	Weight (kg)	Part number
1	Top Sub	7.6	SC50NKS-DHD-01
2	O Ring Of Top Sub	0.005	SC50NKS-DHD-02
3	Check Valve	0.20	SC50NKS-DHD-03
4	Spring	0.10	SC50NKS-DHD-04
5	Compression Buffer	0.20	SC50NKS-DHD-05
6	Air Distributor	1.60	SC50NKS-DHD-06
7	Internal Cylinder	2.60	SC50NKS-DHD-07
8	Piston	9.0	SC50NKS-DHD-08
9	External Cylinder	16.5	SC50NKS-DHD-09
10	Guide Sleeve	1.40	SC50NKS-DHD-10
11	O Ring of Guide Sleeve	0.01	SC50NKS-DHD-11
12	O Ring of Stop Ring	0.005	SC50NKS-DHD-12
13	Stop Ring	0.20	SC50NKS-DHD-13
14	Drive Chuck	4.00	SC50NKS-DHD-14
15	Drill Bit		



Bit specifications:

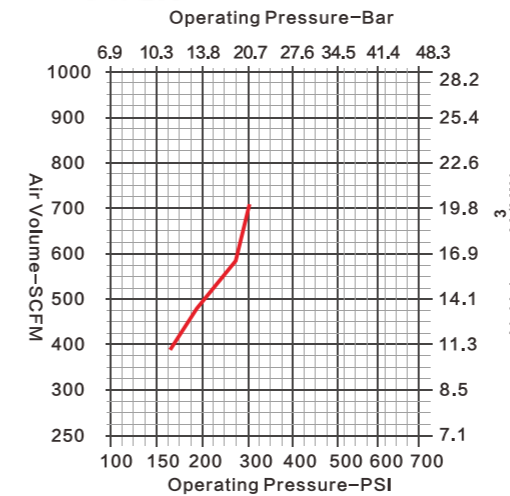
Diameter		Button configure Qty x dia.		Bit design	Weight (kg)	Part number
Metric	Inch	Gauge button	Front button			
120mm	4 3/4"	Φ14mm*8	Φ13mm*3, Φ14mm*4	Convex face	8.5	SC50NKS-DHD-120CV
125mm	4 15/16"	Φ14mm*8	Φ13mm*3, Φ14mm*4	Convex face	8.8	SC50NKS-DHD-125CV
127mm	5"	Φ14mm*8	Φ13mm*7	Flat face	8.9	SC50NKS-DHD-127FF
130mm	5 1/8"	Φ14mm*8	Φ14mm*7	Flat face	9.1	SC50NKS-DHD-130FF
135mm	5 1/4"	Φ14mm*8	Φ13mm*8	Flat face	9.5	SC50NKS-DHD-135FF
140mm	5 1/2"	Φ16mm*8	Φ14mm*7	Flat face	9.9	SC50NKS-DHD-140FF

SC50NS-DHD Hammer & Bit



Hammer overview	
Can fit original bit shank	COP54/DHD350R(No footvalve)
Top Sub Thread	API 2 3/8" REG/API 3 1/2"REG
Length (less bit)	1110mm(43.8in)
External diameter	116mm(4.6in)
Weight (less bit)	56.3kg (124lbs)
Impact rate at 17bar	30 Hz
Hole range	127mm-146mm (5 in-5.7in)
Working pressure	10 - 25 bar (145 - 362.5 psi)
Speed recommended	30-60 rpm
Pull force recommended	9.0 KN

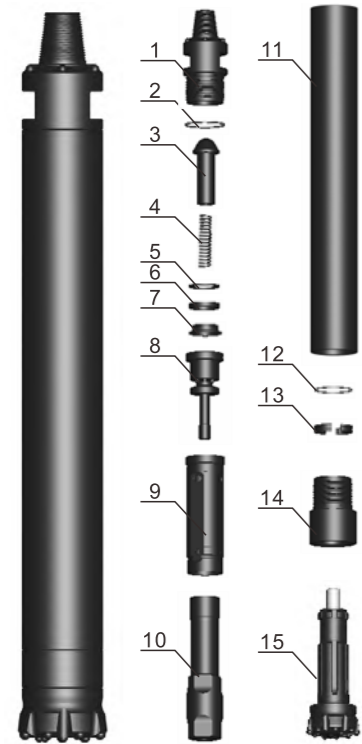
Parts List			
Item	Description	Weight (kg)	Part number
1	Top Sub	10.0	SC50NS-DHD-01
2	O Ring Of Top Sub	0.015	SC50NS-DHD-02
3	Check Valve	0.70	SC50NS-DHD-03
4	Spring	0.10	SC50NS-DHD-04
5	Air Distributor	1.80	SC50NS-DHD-05
6	Internal Cylinder	3.15	SC50NS-DHD-06
7	Piston	11.8	SC50NS-DHD-07
8	External Cylinder	21.5	SC50NS-DHD-08
9	Guide Sleeve	1.75	SC50NS-DHD-09
10	O Ring Of Stop Ring	0.01	SC50NS-DHD-10
11	Stop Ring	0.45	SC50NS-DHD-11
12	Drive Chuck	5.05	SC50NS-DHD-12
13	Drill Bit		



Bit specifications:

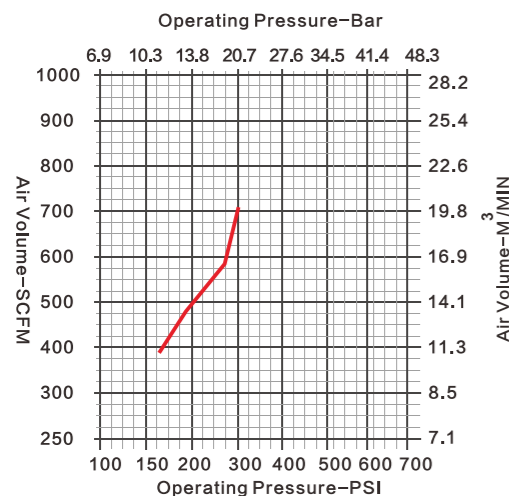
Diameter		Button configure Qty x dia.		Bit design	Weight (kg)	Part number
Metric	Inch	Gauge button	Front button			
127mm	5"	Φ16mm*7	Φ14mm*3, Φ14mm*4	Convex face	14.3	SC50NS-DHD-127CV
130mm	5 1/8"	Φ16mm*7	Φ14mm*3, Φ14mm*4	Convex face	14.5	SC50NS-DHD-130CV
132mm	5 1/5"	Φ16mm*7	Φ14mm*3, Φ14mm*4	Convex face	14.6	SC50NS-DHD-132CV
132mm	5 1/5"	Φ16mm*7	Φ14mm*7	Flat face	14.6	SC50NS-DHD-132FF
135mm	5 1/4"	Φ18mm*7	Φ14mm*3, Φ14mm*4	Convex face	14.8	SC50NS-DHD-135CV
135mm	5 1/4"	Φ18mm*7	Φ14mm*7	Flat face	14.8	SC50NS-DHD-135FF

SC50-DHD Hammer & Bit



Hammer overview	
Shank	COP54/DHD350R
Top Sub Thread	API 2 3/8" REG/API 3 1/2"REG
Length (less bit)	1214mm(47.8in)
External diameter	125mm(4.93in)
Weight (less bit)	77kg (169.8lbs)
Impact rate at 17bar	26Hz
Hole range	135mm-152mm (5.3in - 6in)
Working pressure	10 - 25 bar (145 - 362.5 psi)
Speed recommended	30-60 rpm
Pull force recommended	9.5 kN

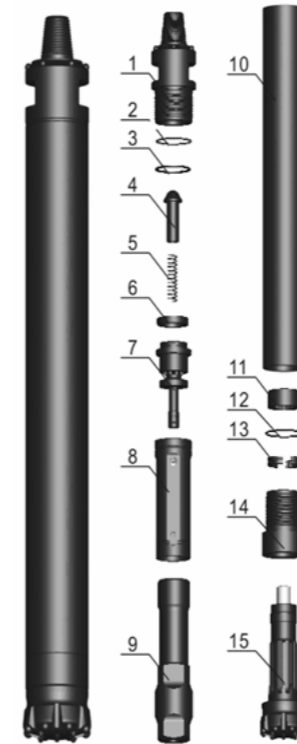
Parts List			
Item	Description	Weight (kg)	Part number
1	Top Sub	14.7	SC50-DHD-01
2	O Ring Of Top Sub	0.01	SC50-DHD-02
3	Check Valve	1.00	SC50-DHD-03
4	Spring	0.04	SC50-DHD-04
5	Breakout Ring	0.10	SC50-DHD-05
6	Compression Buffer	0.06	SC50-DHD-06
7	Base of Compression Buffer	0.40	SC50-DHD-07
8	Air Distributor	3.7	SC50-DHD-08
9	Internal Cylinder	4.5	SC50-DHD-09
10	Piston	15.50	SC50-DHD-10
11	External Cylinder	30	SC50-DHD-11
12	O Ring Of Stop Ring	0.01	SC50-DHD-12
13	Stop Ring	0.30	SC50-DHD-13
14	Drive Chuck	6.40	SC50-DHD-14
15	Drill Bit		SC50-DHD-15



Bit specifications:

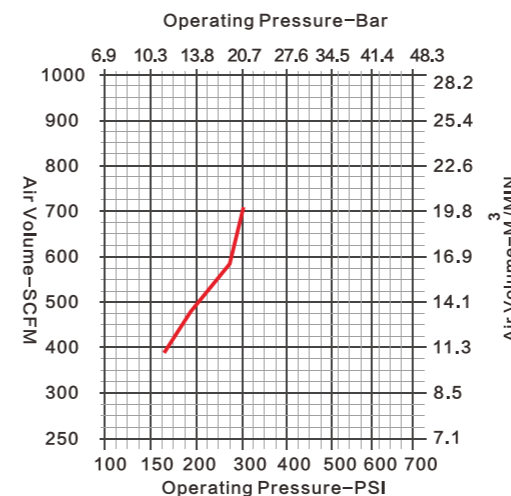
Diameter		Button configure Qty x dia.		Bit design	Weight (kg)	Part number
Metric	Inch	Gauge button	Front button			
140mm	5 1/2"	Φ18mm*7	Φ14mm*3, Φ15mm*4	Convex face	15.3	SC50-DHD-140CV
140mm	5 1/2"	Φ16mm*8	Φ14mm*8	Flat face	15.5	SC50-DHD-140FF
146mm	5 3/4"	Φ18mm*8	Φ15mm*8	Flat face	16.1	SC50-DHD-146FF
146mm	5 3/4"	Φ18mm*8	Φ15mm*4, Φ14mm*3	Concave face	16	SC50-DHD-146CC
152mm	6"	Φ18mm*8	Φ15mm*8	Flat face	16.6	SC50-DHD-152FF
152mm	6"	Φ18mm*8	Φ16mm*4, Φ14mm*4	Concave face	16.4	SC50-DHD-152CC

SC50-QL Hammer & Bit



Hammer overview	
Can fit original bit shank	COP54 Gold / QL50
Top Sub Thread	API 2 3/8" REG API 3 1/2" REG
Length (less bit)	1156mm(45.5 in)
External diameter	125mm(4.92 in)
Weight (less bit)	73kg(160.96lbs)
Impact rate at 17bar	26Hz
Hole range	135mm-152mm(5.31in-5.98in)
Working pressure	10-25bar(145-362.5psi)
Speed recommended	30-60rpm
Pull force recommended	9.5kN

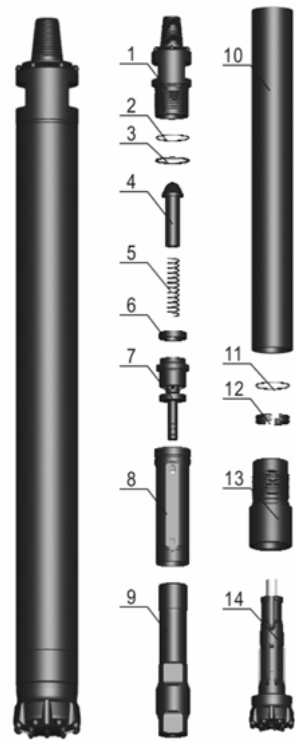
Parts List			
Item	Description	Weight (kg)	Part number
1	Top Sub	13.7	SC50-QL-01
2	"O" Ring of Top Sub	0.015	SC50-QL-02
3	Breakout Ring	0.15	SC50-QL-03
4	Check Valve	1	SC50-QL-04
5	Spring	0.1	SC50-QL-05
6	Compression Buffer	0.1	SC50-QL-06
7	Air Distributor	3.5	SC50-QL-07
8	Internal Cylinder	4.2	SC50-QL-08
9	Piston	19	SC50-QL-09
10	External Cylinder	24.6	SC50-QL-10
11	Guided Sleeve	0.9	SC50-QL-11
12	"O" Ring of Stop Ring	0.01	SC50-QL-12
13	Stop Ring	0.4	SC50-QL-13
14	Drive Chuck	4.6	SC50-QL-14
15	Drill Bit		



Bit specifications:

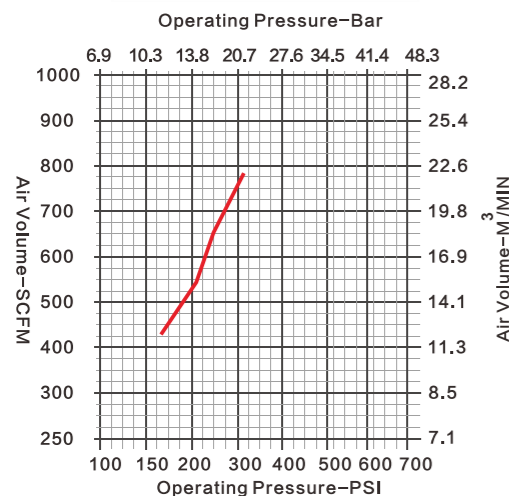
Diameter		Button configure Qty x dia.		Bit design	Weight (kg)	Part number
Metric	Inch	Gauge button	Front button			
140mm	5 1/2"	Φ18mm*7	Φ14mm*3, Φ15mm*4	Convex face	15.1	SC50-QL-140CV
140mm	5 1/2"	Φ16mm*8	Φ14mm*8	Flat face	15.3	SC50-QL-140FF
146mm	5 3/4"	Φ18mm*8	Φ15mm*8	Flat face	15.9	SC50-QL-146FF
146mm	5 3/4"	Φ18mm*8	Φ15mm*4, Φ14mm*3	Concave face	15.8	SC50-QL-146CC
152mm	6"	Φ18mm*8	Φ15mm*8	Flat face	16.4	SC50-QL-152FF
152mm	6"	Φ18mm*8	Φ16mm*4, Φ14mm*4	Concave face	16.2	SC50-QL-152CC

SC50-SD Hammer & Bit



Hammer overview	
Can fit original bit shank	SD5
Top Sub Thread	API 2 3/8" REG API 3 1/2" REG
Length (less bit)	1175mm(46.26 in)
External diameter	125mm(4.92 in)
Weight (less bit)	72.5kg(159.83lbs)
Impact rate at 17bar	26Hz
Hole range	135mm-152mm(5.31in-5.98in)
Working pressure	10-25bar(145-362.5psi)
Speed recommended	30-60rpm
Pull force recommended	9.5kN

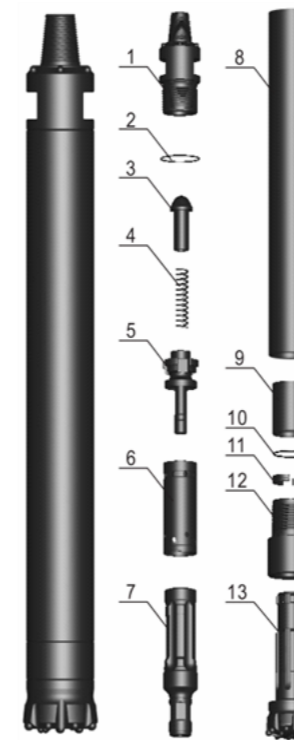
Parts List			
Item	Description	Weight (kg)	Part number
1	Top Sub	13.7	SC50-SD-01
2	"O" Ring of Top Sub	0.01	SC50-SD-02
3	Breakout Ring	0.25	SC50-SD-03
4	Check Valve	1	SC50-SD-04
5	Spring	0.1	SC50-SD-05
6	Compression Buffer	0.05	SC50-SD-06
7	Air Distributor	3.5	SC50-SD-07
8	Internal Cylinder	4.2	SC50-SD-08
9	Piston	15.5	SC50-SD-09
10	External Cylinder	25	SC50-SD-10
11	"O" Ring of Stop Ring	0.01	SC50-SD-11
12	Stop Ring	0.5	SC50-SD-12
13	Drive Chuck	7.5	SC50-SD-13
14	Drill Bit		



Bit specifications:

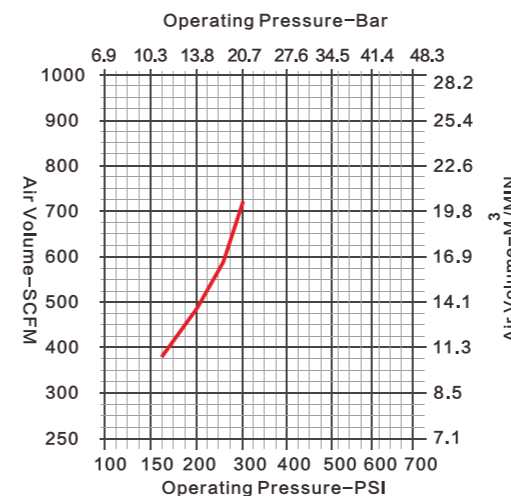
Diameter		Button configure Qty x dia.		Bit design	Weight (kg)	Part number
Metric	Inch	Gauge button	Front button			
140mm	5 1/2"	Φ18mm*7	Φ14mm*3, Φ15mm*4	Convex face	14.6	SC50-SD-140CV
140mm	5 1/2"	Φ16mm*8	Φ14mm*8	Flat face	14.8	SC50-SD-140FF
146mm	5 3/4"	Φ18mm*8	Φ15mm*8	Flat face	15.4	SC50-SD-146FF
146mm	5 3/4"	Φ18mm*8	Φ15mm*4, Φ14mm*3	Concave face	15.3	SC50-SD-146CC
152mm	6"	Φ18mm*8	Φ15mm*8	Flat face	15.9	SC50-SD-152FF
152mm	6"	Φ18mm*8	Φ16mm*4, Φ14mm*4	Concave face	15.7	SC50-SD-152CC

SC50N-DHD Hammer & Bit



Hammer overview	
Can fit original bit shank	DHD350R/COP54 no footvalve
Top Sub Thread	API 2 3/8" REG API 3 1/2" REG
Length (less bit)	1106mm(43.54 in)
External diameter	125mm(4.92 in)
Weight (less bit)	65.2kg(143.74lbs)
Impact rate at 17bar	29Hz
Hole range	135mm-152mm(5.31in-5.98in)
Working pressure	10-25bar(145-362.5psi)
Speed recommended	30-60rpm
Pull force recommended	9.0kN

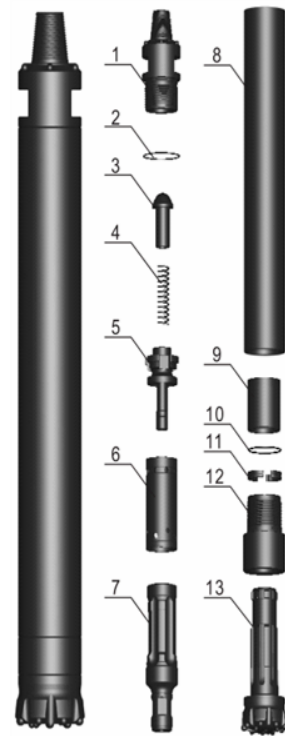
Parts List			
Item	Description	Weight (kg)	Part number
1	Top Sub	13.7	SC50N-DHD-01
2	"O" Ring of Top Sub	0.015	SC50N-DHD-02
3	Check Valve	0.7	SC50N-DHD-03
4	Spring	0.1	SC50N-DHD-04
5	Air Distributor	2.1	SC50N-DHD-05
6	Internal Cylinder	3.45	SC50N-DHD-06
7	Piston	15.7	SC50N-DHD-07
8	External Cylinder	22.3	SC50N-DHD-08
9	Guided Sleeve	2.6	SC50N-DHD-09
10	"O" Ring of Stop Ring	0.01	SC50N-DHD-10
11	Stop Ring	0.55	SC50N-DHD-11
12	Drive Chuck	6.65	SC50N-DHD-12
13	Drill Bit		



Bit specifications:

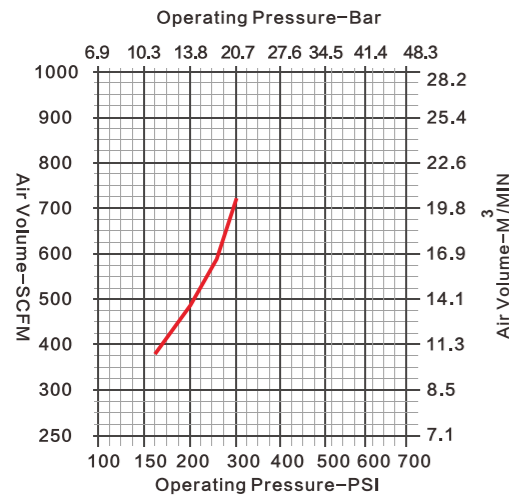
Diameter		Button configure Qty x dia.		Bit design	Weight (kg)	Part number
Metric	Inch	Gauge button	Front button			
140mm	5 1/2"	Φ18mm*7	Φ14mm*3, Φ15mm*4	Convex face	15.3	SC50N-DHD-140CV
140mm	5 1/2"	Φ16mm*8	Φ14mm*8	Flat face	15.5	SC50N-DHD-140FF
146mm	5 3/4"	Φ18mm*8	Φ15mm*8	Flat face	16.1	SC50N-DHD-146FF
146mm	5 3/4"	Φ18mm*8	Φ15mm*4, Φ14mm*3	Concave face	16	SC50N-DHD-146CC
152mm	6"	Φ18mm*8	Φ15mm*8	Flat face	16.6	SC50N-DHD-152FF
152mm	6"	Φ18mm*8	Φ16mm*4, Φ14mm*4	Concave face	16.4	SC50N-DHD-152CC

SC50-M Hammer & Bit



Hammer overview	
Can fit original bit shank	Mission50
Top Sub Thread	API 2 3/8" REG API 3 1/2" REG
Length (less bit)	1106mm(43.54 in)
External diameter	125mm(4.92 in)
Weight (less bit)	65.7kg(144.84lbs)
Impact rate at 17bar	29Hz
Hole range	135mm-152mm(5.31in-5.98in)
Working pressure	10-25bar(145-362.5psi)
Speed recommended	30-60rpm
Pull force recommended	9.0kN

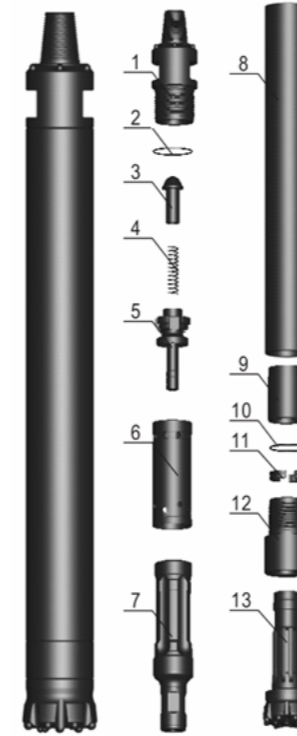
Parts List			
Item	Description	Weight (kg)	Part number
1	Top Sub	13.7	SC50-M-01
2	"O" Ring of Top Sub	0.01	SC50-M-02
3	Check Valve	0.7	SC50-M-03
4	Spring	0.1	SC50-M-04
5	Air Distributor	2	SC50-M-05
6	Internal Cylinder	2.8	SC50-M-06
7	Piston	15.7	SC50-M-07
8	External Cylinder	22.3	SC50-M-08
9	Guided Sleeve	3	SC50-M-09
10	"O" Ring of Stop Ring	0.01	SC50-M-10
11	Stop Ring	0.7	SC50-M-11
12	Drive Chuck	6.95	SC50-M-12
13	Drill Bit		



Bit specifications:

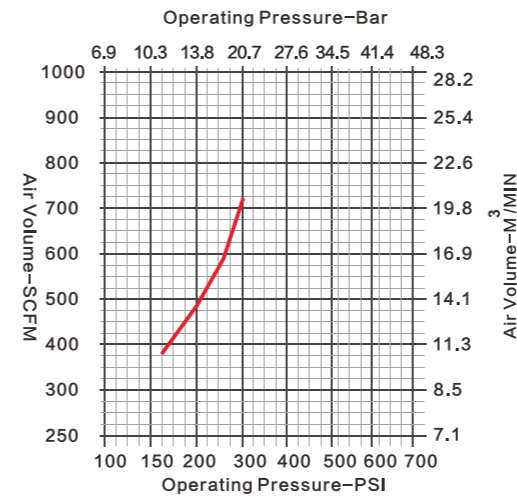
Diameter		Button configure Qty x dia.		Bit design	Weight (kg)	Part number
Metric	Inch	Gauge button	Front button			
140mm	5 1/2"	Φ18mm*7	Φ14mm*3, Φ15mm*4	Convex face	13.7	SC50-M-140CV
140mm	5 1/2"	Φ16mm*8	Φ14mm*8	Flat face	13.9	SC50-M-140FF
146mm	5 3/4"	Φ18mm*8	Φ15mm*8	Flat face	14.5	SC50-M-146FF
146mm	5 3/4"	Φ18mm*8	Φ15mm*4, Φ14mm*3	Concave face	14.4	SC50-M-146CC
152mm	6"	Φ18mm*8	Φ15mm*8	Flat face	15	SC50-M-152-FF
152mm	6"	Φ18mm*8	Φ16mm*4, Φ14mm*4	Concave face	14.8	SC50-M-152CC

SC50N-QL Hammer & Bit



Hammer overview	
Can fit original bit shank	Q150 no footvalve
Top Sub Thread	API 2 3/8" REG API 3 1/2" REG
Length (less bit)	1090mm(42.91 in)
External diameter	125mm(4.92in)
Weight (less bit)	67.0kg(147.71lbs)
Impact rate at 17bar	29Hz
Hole range	135mm-152mm(5.31in-5.98in)
Working pressure	10-25bar(145-362.5psi)
Speed recommended	30-60rpm
Pull force recommended	9.0kN

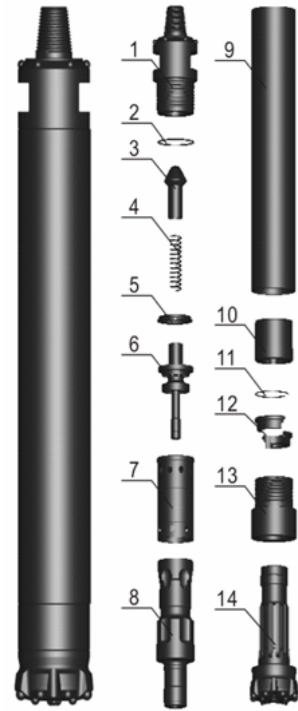
Parts List			
Item	Description	Weight (kg)	Part number
1	Top Sub	13.75	SC50N-QL-01
2	"O" Ring of Top Sub	0.015	SC50N-QL-02
3	Check Valve	0.7	SC50N-QL-03
4	Spring	0.1	SC50N-QL-04
5	Air Distributor	2	SC50N-QL-05
6	Internal Cylinder	2.8	SC50N-QL-06
7	Piston	15.65	SC50N-QL-07
8	External Cylinder	22.03	SC50N-QL-08
9	Guided Sleeve	3	SC50N-QL-09
10	"O" Ring of Stop Ring	0.01	SC50N-QL-10
11	Stop Ring	0.4	SC50N-QL-11
12	Drive Chuck	4.5	SC50N-QL-12
13	Drill Bit		



Bit specifications:

Diameter		Button configure Qty x dia.		Bit design	Weight (kg)	Part number
Metric	Inch	Gauge button	Front button			
140mm	5 1/2"	Φ18mm*7	Φ14mm*3, Φ15mm*4	Convex face	15.1	SC50N-QL-140CV
140mm	5 1/2"	Φ16mm*8	Φ14mm*8	Flat face	15.3	SC50N-QL-140FF
146mm	5 3/4"	Φ18mm*8	Φ15mm*8	Flat face	15.9	SC50N-QL-140FF
146mm	5 3/4"	Φ18mm*8	Φ15mm*4, Φ14mm*3	Concave face	15.8	SC50N-QL-140CC
152mm	6"	Φ18mm*8	Φ15mm*8	Flat face	16.4	SC50N-QL-140FF
152mm	6"	Φ18mm*8	Φ16mm*4, Φ14mm*4	Concave face	16.2	SC50N-QL-140CC

SC50NK-QL High penetration Hammer & Bit

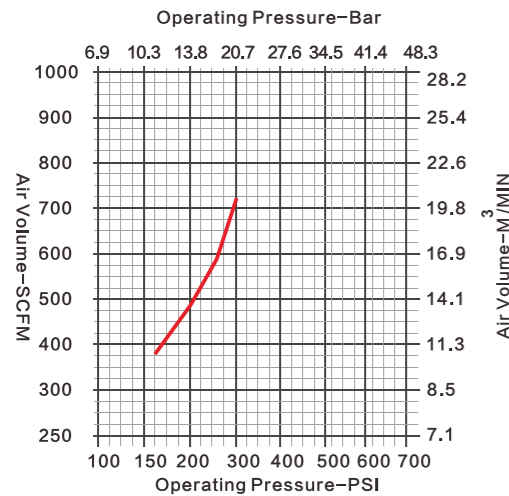


Hammer overview

Can fit original bit shank	QL50 no footvalve
Top Sub Thread	API 2 3/8" REG API 3 1/2" REG
Length (less bit)	1024mm(40.31 in)
External diameter	126mm(4.96in)
Weight (less bit)	66.0kg(145.50lbs)
Impact rate at 17bar	32Hz
Hole range	135mm-152mm(5.31in-5.98in)
Working pressure	10-25bar(145-362.5psi)
Speed recommended	30-60rpm
Pull force recommended	8.5kN

Parts List

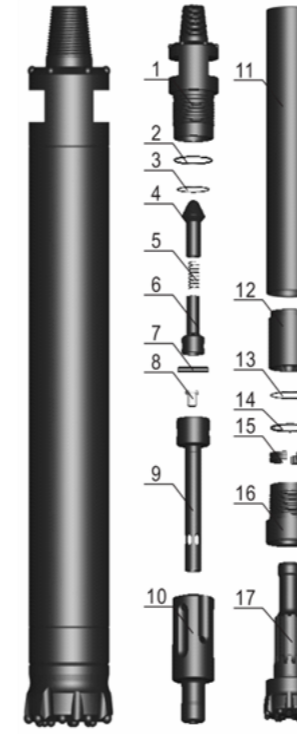
Item	Description	Weight (kg)	Part number
1	Top Sub	12.45	SC50NK-QL-01
2	"O" Ring of Top Sub	0.15	SC50NK-QL-02
3	Check Valve	0.65	SC50NK-QL-03
4	Spring	0.7	SC50NK-QL-04
5	Compression Buffer	0.2	SC50NK-QL-05
6	Air Distributor	2.5	SC50NK-QL-06
7	Internal Cylinder	2.4	SC50NK-QL-07
8	Piston	13	SC50NK-QL-08
9	External Cylinder	23	SC50NK-QL-09
10	Guided Sleeve	3.5	SC50NK-QL-10
11	Retaining Ring	0.15	SC50NK-QL-11
12	Stop Ring	0.5	SC50NK-QL-12
13	Drive Chuck	6.9	SC50NK-QL-13
14	Drill Bit		



Bit specifications:

Diameter		Button configure Qty x dia.		Bit design	Weight (kg)	Part number
Metric	Inch	Gauge button	Front button			
140mm	5 1/2"	Φ18mm*7	Φ14mm*3, Φ15mm*4	Convex face	15.1	SC50NK-QL-140CV
140mm	5 1/2"	Φ16mm*8	Φ14mm*8	Flat face	15.3	SC50NK-QL-140FF
146mm	5 3/4"	Φ18mm*8	Φ15mm*8	Flat face	15.9	SC50NK-QL-146FF
146mm	5 3/4"	Φ18mm*8	Φ15mm*4, Φ14mm*3	Concave face	15.8	SC50NK-QL-146CC
152mm	6"	Φ18mm*8	Φ15mm*8	Flat face	16.4	SC50NK-QL-152FF
152mm	6"	Φ18mm*8	Φ16mm*4, Φ14mm*4	Concave face	16.2	SC50NK-QL-152CC

SC50F-M Hammer & Bit

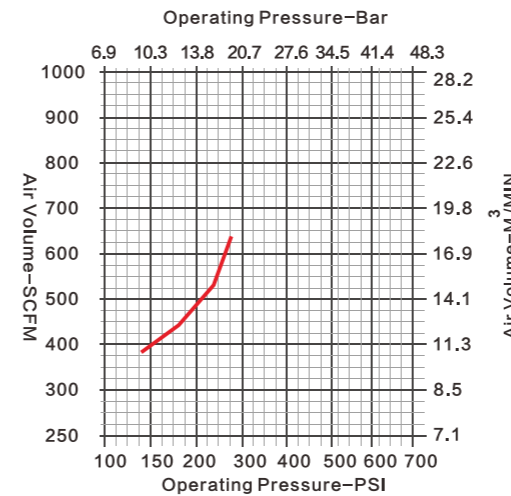


Hammer overview

Can fit original bit shank	Mission50
Top Sub Thread	API 2 3/8" REG
Length (less bit)	1020mm(40.16 in)
External diameter	126.5mm(4.98in)
Weight (less bit)	65.8kg(145.06lbs)
Impact rate at 17bar	32Hz
Hole range	135mm-152mm(5.3in-6in)
Working pressure	10-25bar(145-362.5psi)
Speed recommended	30-60rpm
Pull force recommended	8.5kN

Parts List

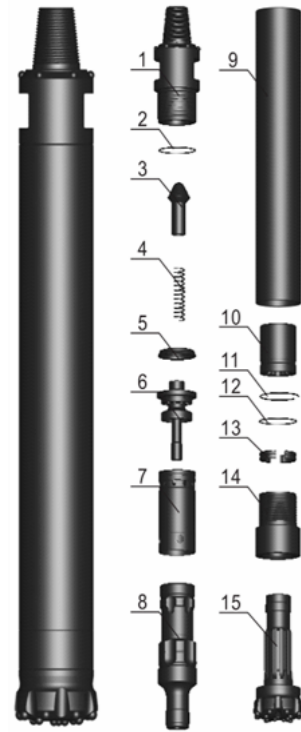
Item	Description	Weight (kg)	Part number
1	Top Sub	16.5	SC50F-M-01
2	"O" Ring of Top Sub	0.01	SC50F-M-02
3	"O" Ring of Top Sub	0.01	SC50F-M-03
4	Check Valve	0.2	SC50F-M-04
5	Spring	0.05	SC50F-M-05
6	Base of Check Valve	0.6	SC50F-M-06
7	Pin	0.2	SC50F-M-07
8	Plunger	0.05	SC50F-M-08
9	Distributor Tube	1.2	SC50F-M-09
10	Piston	12.95	SC50F-M-10
11	External Cylinder	23.4	SC50F-M-11
12	Guided Sleeve	3.4	SC50F-M-12
13	Retaining Ring	0.05	SC50F-M-13
14	"O" Ring of Stop Ring	0.01	SC50F-M-14
15	Stop Ring	0.6	SC50F-M-15
16	Drive Chuck	6.2	SC50F-M-16
17	Drill Bit		



Bit specifications:

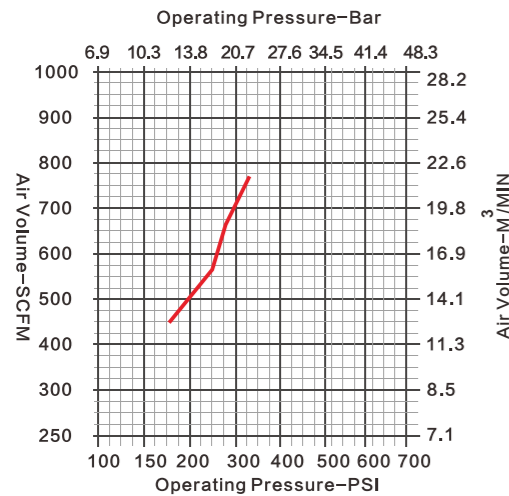
Diameter		Button configure Qty x dia.		Bit design	Weight (kg)	Part number
Metric	Inch	Gauge button	Front button			
140mm	5 1/2"	Φ18mm*7	Φ14mm*3, Φ15mm*4	Convex face	13.7	SC50F-M-140CV
140mm	5 1/2"	Φ16mm*8	Φ14mm*8	Flat face	13.9	SC50F-M-140FF
146mm	5 3/4"	Φ18mm*8	Φ15mm*8	Flat face	14.5	SC50F-M-146FF
146mm	5 3/4"	Φ18mm*8	Φ15mm*4, Φ14mm*3	Concave face	14.4	SC50F-M-146CC
152mm	6"	Φ18mm*8	Φ15mm*8	Flat face	15	SC50F-M-152FF
152mm	6"	Φ18mm*8	Φ16mm*4, Φ14mm*4	Concave face	14.8	SC50F-M-152CC

SC60NKS-QL Slim high penetration Hammer & Bit



Hammer overview	
Can fit original bit shank	Q150 no footvalve
Top Sub Thread	API 3 1/2" REG
Length (less bit)	1058mm(41.65 in)
External diameter	135mm(5.31in)
Weight (less bit)	71.31kg(157.21lbs)
Impact rate at 17bar	30Hz
Hole range	146mm-165mm(5.75in-6.5in)
Working pressure	10-25bar(145-362.5psi)
Speed recommended	25-50rpm
Pull force recommended	9.0kN

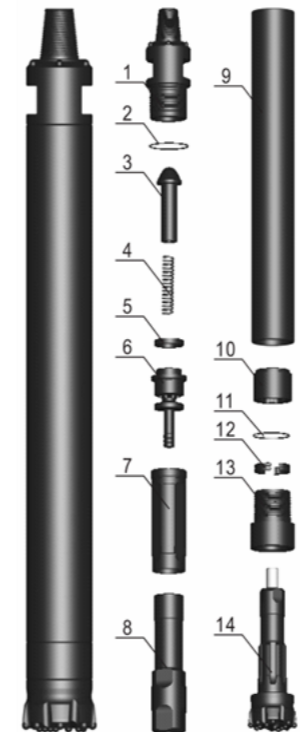
Parts List			
Item	Description	Weight (kg)	Part number
1	Top Sub	12	SC60NKS-QL-01
2	"O" Ring of Top Sub	0.01	SC60NKS-QL-02
3	Check Valve	0.7	SC60NKS-QL-03
4	Spring	0.1	SC60NKS-QL-04
5	Compression Buffer	0.2	SC60NKS-QL-05
6	Air Distributor	2.85	SC60NKS-QL-06
7	Internal Cylinder	2.95	SC60NKS-QL-07
8	Piston	16	SC60NKS-QL-08
9	External Cylinder	25.5	SC60NKS-QL-09
10	Guided Sleeve	4.5	SC60NKS-QL-10
11	Retaining Ring	0.1	SC60NKS-QL-11
12	"O" Ring of Stop Ring	0.01	SC60NKS-QL-12
13	Stop Ring	0.55	SC60NKS-QL-13
14	Drive Chuck	5.8	SC60NKS-QL-14
15	Drill Bit		



Bit specifications:

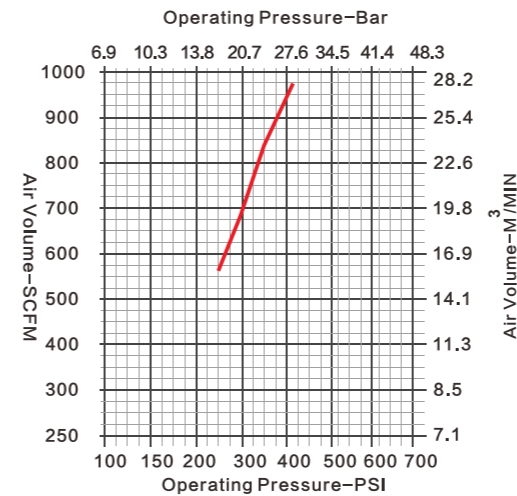
Diameter		Button configure Qty x dia.		Bit design	Weight (kg)	Part number
Metric	Inch	Gauge button	Front button			
146mm	5 3/4"	Φ18mm*8	Φ15mm*8	Flat face	15.9	SC60NKS-QL-146FF
146mm	5 3/4"	Φ18mm*8	Φ15mm*4, Φ14mm*3	Concave face	15.8	SC60NKS-QL-146CC
152mm	6"	Φ18mm*8	Φ15mm*8	Flat face	16.4	SC60NKS-QL-152FF
152mm	6"	Φ18mm*8	Φ16mm*4, Φ14mm*4	Concave face	16.2	SC60NKS-QL-152CC
160mm	6 5/16"	Φ18mm*8	Φ16mm*8	Flat face	16.9	SC60NKS-QL-160FF
160mm	6 5/16"	Φ18mm*8	Φ16mm*4, Φ14mm*4	Concave face	16.7	SC60NKS-QL-160CC

SC60-DHD Hammer & Bit



Hammer overview	
Can fit original bit shank	DHD360/COP64
Top Sub Thread	API 3 1/2" REG
Length (less bit)	1263.5mm(49.74 in)
External diameter	148mm(5.83in)
Weight (less bit)	112.36kg(247.71lbs)
Impact rate at 17bar	25Hz
Hole range	165mm-190mm(6.5in-7.48in)
Working pressure	10-25bar(145-362.5psi)
Speed recommended	25-50rpm
Pull force recommended	11kN

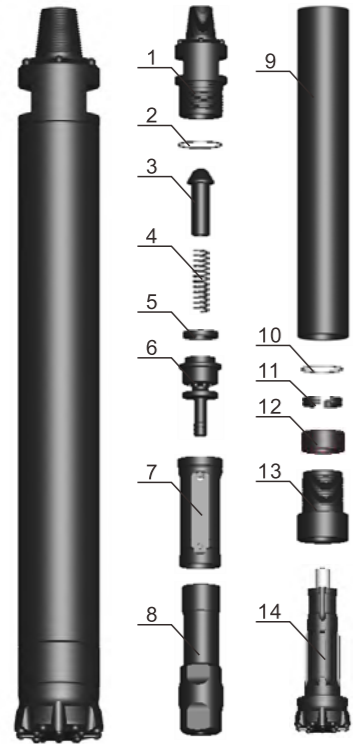
Parts List			
Item	Description	Weight (kg)	Part number
1	Top Sub	21.1	SC60-DHD-01
2	"O" Ring of Top Sub	0.02	SC60-DHD-02
3	Check Valve	1	SC60-DHD-03
4	Spring	0.04	SC60-DHD-04
5	Compression Buffer	0.08	SC60-DHD-05
6	Air Distributor	5.15	SC60-DHD-06
7	Internal Cylinder	5.1	SC60-DHD-07
8	Piston	23.35	SC60-DHD-08
9	External Cylinder	44.7	SC60-DHD-09
10	Guided Sleeve	2.8	SC60-DHD-10
11	"O" Ring of Stop Ring	0.02	SC60-DHD-11
12	Stop Ring	0.85	SC60-DHD-12
13	Drive Chuck	8.15	SC60-DHD-13
14	Drill Bit		



Bit specifications:

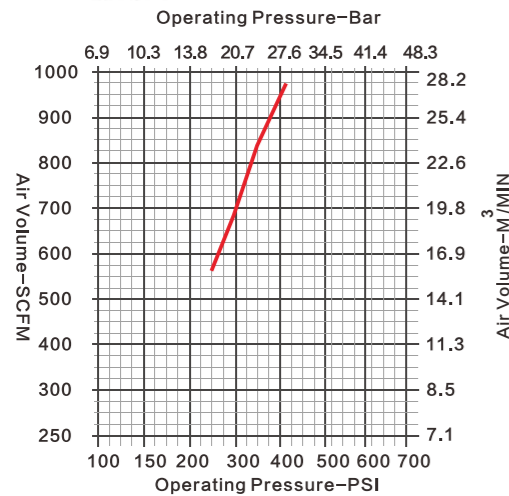
Diameter		Button configure Qty x dia.		Bit design	Weight (kg)	Part number
Metric	Inch	Gauge button	Front button			
165mm	6 1/2"	Φ18mm*8	Φ16mm*8	Flat face	24.6	SC60-DHD-165FF
165mm	6 1/2"	Φ18mm*8	Φ16mm*4, Φ16mm*4	Convex face	24.4	SC60-DHD-165CV
165mm	6 1/2"	Φ18mm*8	Φ16mm*6, Φ15mm*4	Concave face	24.1	SC60-DHD-165CC
171mm	6 3/4"	Φ18mm*8	Φ16mm*6, Φ16mm*4	Concave face	24.8	SC60-DHD-171CC
178mm	7"	Φ18mm*8	Φ16mm*6, Φ16mm*4	Concave face	25.4	SC60-DHD-178CC
190mm	7 1/2"	Φ18mm*10	Φ16mm*8, Φ16mm*5	Concave face	26.9	SC60-DHD-190CC

SC60-SD Hammer & Bit



Hammer overview	
Can fit original bit shank	SD6
Top Sub Thread	API 3 1/2" REG
Length (less bit)	1261mm(49.65 in)
External diameter	142mm(5.59in)
Weight (less bit)	100kg(220.46lbs)
Impact rate at 17bar	25Hz
Hole range	152mm-190mm(5.98in-7.48in)
Working pressure	10-25bar(145-362.5psi)
Speed recommended	25-50rpm
Pull force recommended	11kN

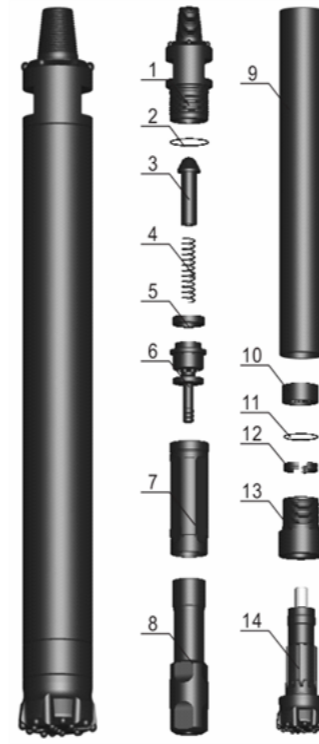
Parts List			
Item	Description	Weight (kg)	Part number
1	Top Sub	20	SC60-SD-01
2	"O" Ring of Top Sub	0.01	SC60-SD-02
3	Check Valve	1	SC60-SD-03
4	Spring	0.05	SC60-SD-04
5	Compression Buffer	0.1	SC60-SD-05
6	Air Distributor	5	SC60-SD-06
7	Internal Cylinder	5	SC60-SD-07
8	Piston	24	SC60-SD-08
9	External Cylinder	35	SC60-SD-09
10	Guided Sleeve	1	SC60-SD-10
11	"O" Ring of Stop Ring	0.01	SC60-SD-11
12	Stop Ring	1.5	SC60-SD-12
13	Drive Chuck	4.5	SC60-SD-13
14	Drill Bit		



Bit specifications:

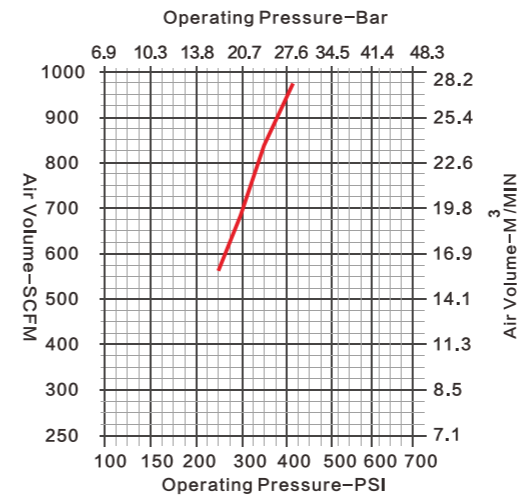
Diameter		Button configure Qty x dia.		Bit design	Weight (kg)	Part number
Metric	Inch	Gauge button	Front button			
165mm	6 1/2"	Φ18mm*8	Φ16mm*8	Flat face	26.3	SC60-SD-165FF
165mm	6 1/2"	Φ18mm*8	Φ16mm*4, Φ16mm*4	Convex face	26.1	SC60-SD-165CV
165mm	6 1/2"	Φ18mm*8	Φ16mm*4, Φ15mm*4	Concave face	25.8	SC60-SD-165CC
171mm	6 3/4"	Φ18mm*8	Φ16mm*6, Φ16mm*4	Concave face	26.5	SC60-SD-171CC
178mm	7"	Φ18mm*8	Φ16mm*6, Φ16mm*4	Concave face	27.1	SC60-SD-178CC
190mm	7 1/2"	Φ18mm*10	Φ16mm*8, Φ16mm*5	Concave face	28.6	SC60-SD-190CC

SC60-QL Hammer & Bit



Hammer overview	
Can fit original bit shank	QL60/COP64 GOLD no footvalve
Top Sub Thread	API 3 1/2" REG
Length (less bit)	1212mm(47.72in)
External diameter	148mm(5.83in)
Weight (less bit)	95.0kg(209.44lbs)
Impact rate at 17bar	25Hz
Hole range	165mm-190mm(6.50in-7.48in)
Working pressure	10-25bar(145-362.5psi)
Speed recommended	25-50rpm
Pull force recommended	11kN

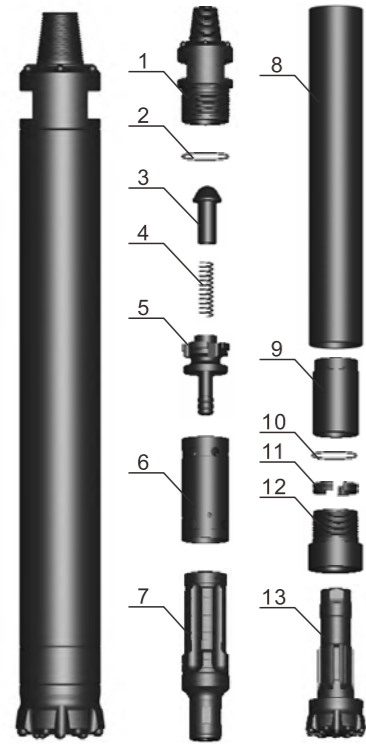
Parts List			
Item	Description	Weight (kg)	Part number
1	Top Sub	21.1	SC60-QL-01
2	"O" Ring of Top Sub	0.02	SC60-QL-02
3	Check Valve	1	SC60-QL-03
4	Spring	0.1	SC60-QL-04
5	Compression Buffer	0.1	SC60-QL-05
6	Air Distributor	6	SC60-QL-06
7	Internal Cylinder	5	SC60-QL-07
8	Piston	23.5	SC60-QL-08
9	External Cylinder	31	SC60-QL-09
10	Guided Sleeve	1	SC60-QL-10
11	"O" Ring of Stop Ring	0.02	SC60-QL-11
12	Stop Ring	0.6	SC60-QL-12
13	Drive Chuck	5.4	SC60-QL-13
14	Drill Bit		



Bit specifications:

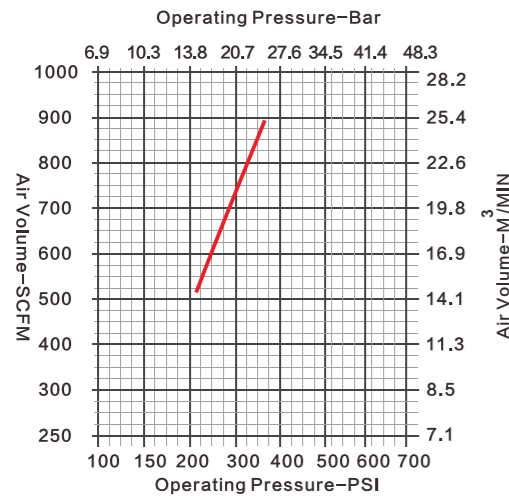
Diameter		Button configure Qty x dia.		Bit design	Weight (kg)	Part number
Metric	Inch	Gauge button	Front button			
165mm	6 1/2"	Φ18mm*8	Φ16mm*8	Flat face	23.8	SC60-QL-165FF
165mm	6 1/2"	Φ18mm*8	Φ16mm*4, Φ16mm*4	Convex face	23.6	SC60-QL-165CV
165mm	6 1/2"	Φ18mm*8	Φ16mm*4, Φ15mm*4	Concave face	23.3	SC60-QL-165CC
171mm	6 3/4"	Φ18mm*8	Φ16mm*6, Φ16mm*4	Concave face	24	SC60-QL-171CC
178mm	7"	Φ18mm*8	Φ16mm*6, Φ16mm*4	Concave face	24.6	SC60-QL-178CC
190mm	7 1/2"	Φ18mm*10	Φ16mm*8, Φ16mm*5	Concave face	26.1	SC60-QL-190CC

SC60N-DHD Hammer & Bit



Hammer overview	
Can fit original bit shank	DHD360/COP64 no footvalve
Top Sub Thread	API 3 1/2" REG
Length(less bit)	1238mm(48.74in)
External diameter	148mm(5.83in)
Weight(less bit)	112.1kg(247.14lbs)
Impact rate at 17 bar	27Hz
Hole range	165mm-190mm(6.50in-7.48in)
Working pressure	10-25bar(145-362.5psi)
Speed recommended	25-50rpm
Pull force recommended	9.5kN
Air consumption	14bar 14.22m ³ /min
	17.2bar 17.64m ³ /min
	20.7bar 21.15m ³ /min
	24bar 24.75m ³ /min

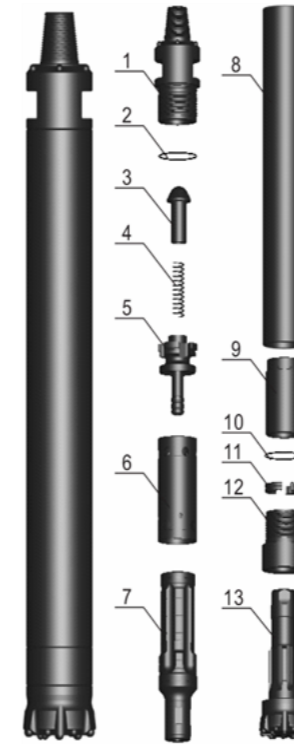
Parts List			
Item	Description	Weight (kg)	Part number
1	Top Sub	21.1	SC60N-DHD -01
2	"O" Ring of Top Sub	0.02	SC60N-DHD -02
3	Check Valve	0.7	SC60N-DHD -03
4	Spring	0.1	SC60N-DHD -04
5	Air Distributor	3.5	SC60N-DHD -05
6	Internal Cylinder	5.3	SC60N-DHD -06
7	Piston	24.1	SC60N-DHD -07
8	External Cylinder	40.3	SC60N-DHD -08
9	Guided Sleeve	6.5	SC60N-DHD -09
10	"O" Ring of Stop Ring	0.01	SC60N-DHD -10
11	Stop Ring	0.85	SC60N-DHD -11
12	Drive Chuck	8.15	SC60N-DHD -12
13	Drill Bit		



Bit specifications:

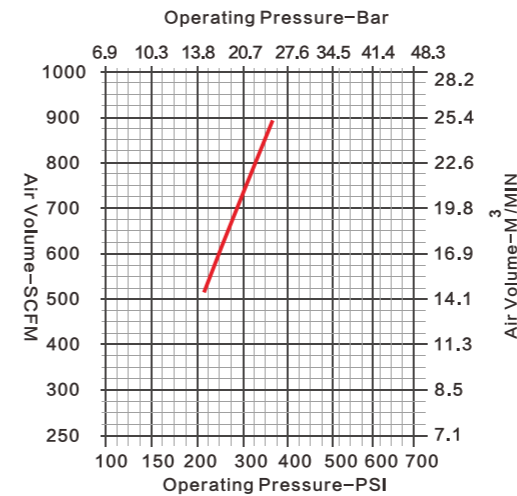
Diameter		Button configure Qty x dia.		Bit design	Weight (kg)	Part number
Metric	Inch	Gauge button	Front button			
165mm	6 1/2"	Φ18mm*8	Φ16mm*8	Flat face	24.6	SC60N-DHD-165FF
165mm	6 1/2"	Φ18mm*8	Φ16mm*4, Φ16mm*4	Convex face	24.4	SC60N-DHD-165CV
165mm	6 1/2"	Φ18mm*8	Φ16mm*4, Φ15mm*4	Concave face	24.1	SC60N-DHD-165CC
171mm	6 3/4"	Φ18mm*8	Φ16mm*6, Φ16mm*4	Concave face	24.8	SC60N-DHD-171CC
178mm	7"	Φ18mm*8	Φ16mm*6, Φ16mm*4	Concave face	25.4	SC60N-DHD-178CC
190mm	7 1/2"	Φ18mm*10	Φ16mm*8, Φ16mm*5	Concave face	26.9	SC60N-DHD-190CC

SC60N-QL Hammer & Bit



Hammer overview	
Can fit original bit shank	QL60 no footvalve
Top Sub Thread	API 3 1/2" REG
Length (less bit)	1183mm(46.57in)
External diameter	148mm(5.83in)
Weight (less bit)	92.0kg(202.82lbs)
Impact rate at 17bar	27Hz
Hole range	165mm-190mm(6.50in-7.48in)
Working pressure	10-25bar(145-362.5psi)
Speed recommended	25-50rpm
Pull force recommended	9.5kN

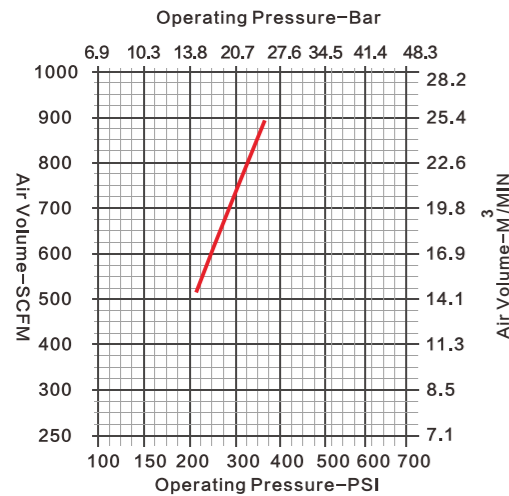
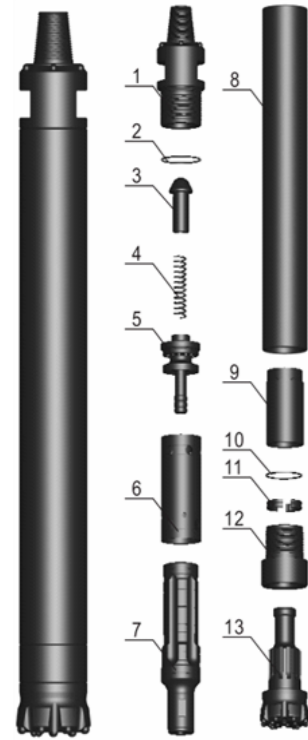
Parts List			
Item	Description	Weight (kg)	Part number
1	Top Sub	21.1	SC60N-QL-01
2	"O" Ring of Top Sub	0.015	SC60N-QL-02
3	Check Valve	0.7	SC60N-QL-03
4	Spring	0.1	SC60N-QL-04
5	Air Distributor	3.5	SC60N-QL-05
6	Internal Cylinder	5.3	SC60N-QL-06
7	Piston	24.1	SC60N-QL-07
8	External Cylinder	30	SC60N-QL-08
9	Guided Sleeve	4	SC60N-QL-09
10	"O" Ring of Stop Ring	0.01	SC60N-QL-10
11	Stop Ring	0.6	SC60N-QL-11
12	Drive Chuck	5.5	SC60N-QL-12
13	Drill Bit		



Bit specifications:

Diameter		Button configure Qty x dia.		Bit design	Weight (kg)	Part number
Metric	Inch	Gauge button	Front button			
165mm	6 1/2"	Φ18mm*8	Φ16mm*8	Flat face	23.8	SC60N-QL-165FF
165mm	6 1/2"	Φ18mm*8	Φ16mm*4, Φ16mm*4	Convex face	23.6	SC60N-QL-165CV
165mm	6 1/2"	Φ18mm*8	Φ16mm*4, Φ15mm*4	Concave face	23.3	SC60N-QL-165CC
171mm	6 3/4"	Φ18mm*8	Φ16mm*6, Φ16mm*4	Concave face	24	SC60N-QL-171CC
178mm	7"	Φ18mm*8	Φ16mm*6, Φ16mm*4	Concave face	24.6	SC60N-QL-178CC
190mm	7 1/2"	Φ18mm*10	Φ16mm*8, Φ16mm*5	Concave face	26.1	SC60N-QL-190CC

SC60-M Hammer & Bit



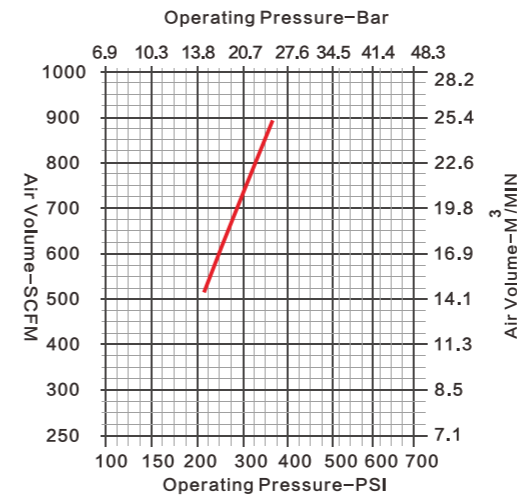
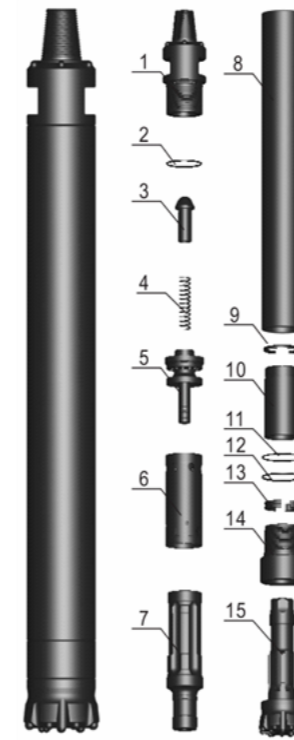
Hammer overview	
Can fit original bit shank	Mission60
Top Sub Thread	API 3 1/2" REG
Length (less bit)	1161mm(45.71in)
External diameter	148mm(5.83in)
Weight (less bit)	103.5kg(228.18lbs)
Impact rate at 17bar	27Hz
Hole range	165mm-190mm(6.50in-7.48in)
Working pressure	10-25bar(145-362.5psi)
Speed recommended	25-50rpm
Pull force recommended	9.5kN

Parts List			
Item	Description	Weight (kg)	Part number
1	Top Sub	22	SC60-M-01
2	"O" Ring of Top Sub	0.01	SC60-M-02
3	Check Valve	0.6	SC60-M-03
4	Spring	0.1	SC60-M-04
5	Air Distributor	3.5	SC60-M-05
6	Internal Cylinder	5.3	SC60-M-06
7	Piston	24.1	SC60-M-07
8	External Cylinder	33.9	SC60-M-08
9	Guided Sleeve	5.5	SC60-M-09
10	"O" Ring of Stop Ring	0.01	SC60-M-10
11	Stop Ring	1.1	SC60-M-11
12	Drive Chuck	7	SC60-M-12
13	Drill Bit		

Bit specifications:

Diameter		Button configure Qty x dia.		Bit design	Weight (kg)	Part number
Metric	Inch	Gauge button	Front button			
165mm	6 1/2"	Φ18mm*8	Φ16mm*8	Flat face	21.6	SC60-M-165FF
165mm	6 1/2"	Φ18mm*8	Φ16mm*4, Φ16mm*4	Convex face	21.4	SC60-M-165CV
165mm	6 1/2"	Φ18mm*8	Φ16mm*4, Φ15mm*4	Concave face	21.1	SC60-M-165CC
171mm	6 3/4"	Φ18mm*8	Φ16mm*6, Φ16mm*4	Concave face	21.8	SC60-M-171CC
178mm	7"	Φ18mm*8	Φ16mm*6, Φ16mm*4	Concave face	22.4	SC60-M-178CC
190mm	7 1/2"	Φ18mm*10	Φ16mm*8, Φ16mm*5	Concave face	23.9	SC60-M-190CC

SC60-DWELL Hammer & Bit



Hammer overview	
Can fit original bit shank	DHD360/COP64 no footvalve
Top Sub Thread	API 3 1/2" REG
Length(less bit)	1198mm(47.17in)
External diameter	148mm(5.83in)
Weight(less bit)	106.5kg(234.79lbs)
Impact rate at 17 bar	27Hz
Hole range	165mm-190mm(6.50in-7.48in)
Working pressure	10-25bar(145-362.5psi)
Speed recommended	25-50rpm
Pull force recommended	9.5kN
	14bar 14.22m3/min
	17.2bar 17.64m3/min
Air consumption 20.7bar	21.15m3/min
	24bar 24.75m3/min

Parts List			
Item	Description	Weight (kg)	Part number
1	Top Sub	21.2	SC60-DWELL-01
2	"O" Ring of Top Sub	0.01	SC60-DWELL-02
3	Check Valve	0.6	SC60-DWELL-03
4	Spring	0.1	SC60-DWELL-04
5	Air Distributor	3.8	SC60-DWELL-05
6	Internal Cylinder	3.3	SC60-DWELL-06
7	Piston	23	SC60-DWELL-07
8	External Cylinder	36.5	SC60-DWELL-08
9	Retaining Ring	0.5	SC60-DWELL-09
10	Guided Sleeve	7.2	SC60-DWELL-10
11	Retaining Ring	0.12	SC60-DWELL-11
12	"O" Ring of Stop Ring	0.01	SC60-DWELL-12
13	Stop Ring	1	SC60-DWELL-13
14	Drive Chuck	9.2	SC60-DWELL-14
15	Drill Bit		

Bit specifications:

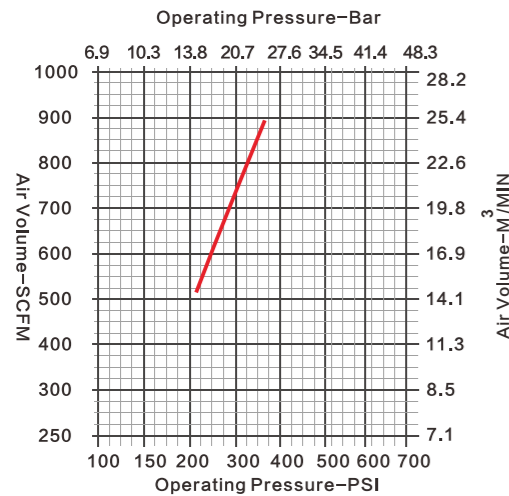
Diameter		Button configure Qty x dia.		Bit design	Weight (kg)	Part number
Metric	Inch	Gauge button	Front button			
165mm	6 1/2"	Φ18mm*8	Φ16mm*8	Flat face	24.6	SC60-DWEL-165FF
165mm	6 1/2"	Φ18mm*8	Φ16mm*4, Φ16mm*4	Convex face	24.4	SC60-DWEL-165CV
165mm	6 1/2"	Φ18mm*8	Φ16mm*4, Φ15mm*4	Concave face	24.1	SC60-DWEL-165CC
171mm	6 3/4"	Φ18mm*8	Φ16mm*6, Φ16mm*4	Concave face	24.8	SC60-DWEL-171CC
178mm	7"	Φ18mm*8	Φ16mm*6, Φ16mm*4	Concave face	25.4	SC60-DWEL-178CC
190mm	7 1/2"	Φ18mm*10	Φ16mm*8, Φ16mm*5	Concave face	26.9	SC60-DWEL-190CC

SC66F-COP Hammer & Bit



Hammer overview	
Can fit original bit shank	COP66
Top Sub Thread	API 3 1/2" REG
Length(less bit)	896mm(35.28in)
External diameter	146mm(5.75in)
Weight(less bit)	68kg(149.91lbs)
Impact rate at 17 bar	27Hz
Hole range	165mm-190mm(6.50in-7.48in)
Working pressure	10-25bar(145-362.5psi)
Speed recommended	25-50rpm
Pull force recommended	9.5kN

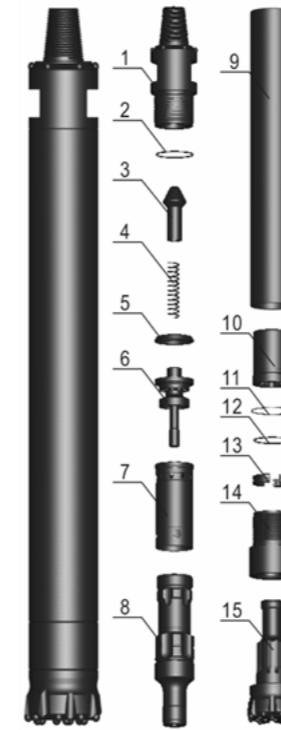
Parts List			
Item	Description	Weight (kg)	Part number
1	Top Sub	14.05	SC66F-COP-01
2	"O" Ring of Top Sub	0.01	SC66F-COP-02
3	Check Valve	0.35	SC66F-COP-03
4	Spring	0.05	SC66F-COP-04
5	Check Valve Base	1.1	SC66F-COP-05
6	AD Tube Easher	0.05	SC66F-COP-06
7	Air Distributor	1.6	SC66F-COP-07
8	AD Tube Easher	0.05	SC66F-COP-08
9	AD Tube Base	0.3	SC66F-COP-09
10	"O" Ring of AD Tube Base	0.01	SC66F-COP-10
11	Jump Ring	0.02	SC66F-COP-11
12	Piston	17.4	SC66F-COP-12
13	External Cylinder	24.65	SC66F-COP-13
14	Guided Sleeve	2.15	SC66F-COP-14
15	"O" Ring of Guided Sleeve	0.1	SC66F-COP-15
16	Stop Ring	0.01	SC66F-COP-16
17	"O" Ring of Stop Ring	0.55	SC66F-COP-17
18	Drive Chuck	5.4	SC66F-COP-18
19	Drill Bit		



Bit specifications:

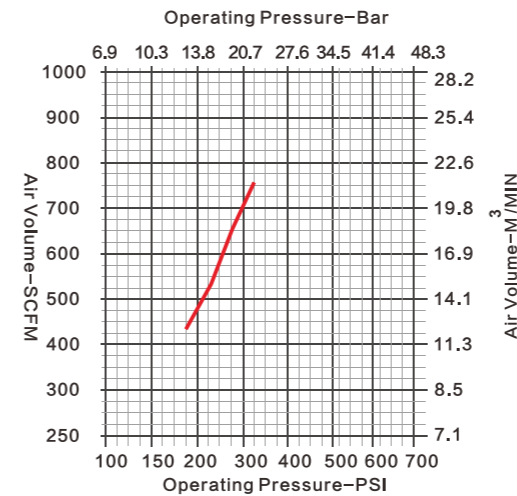
Diameter		Button configure Qty x dia.		Bit design	Weight (kg)	Part number
Metric	Inch	Gauge button	Front button			
165mm	6 1/2"	Φ19mm*8	Φ18mm*6	Flat face	21.9	SC66F-COP-165FF
165mm	6 1/2"	Φ19mm*8	Φ18mm*4, Φ18mm*4	Convex face	22.6	SC66F-COP-165CV
165mm	6 1/2"	Φ19mm*8	Φ18mm*4, Φ16mm*4	Concave face	21.8	SC66F-COP-165CC
171mm	6 3/4"	Φ19mm*8	Φ18mm*9	Flat face	22.5	SC66F-COP-171FF
171mm	6 3/4"	Φ19mm*8	Φ18mm*5, Φ18mm*4	Convex face	23.1	SC66F-COP-171CV
171mm	6 3/4"	Φ19mm*8	Φ18mm*4, Φ16mm*4	Concave face	22.3	SC66F-COP-171CC

SC60K-M Hammer & Bit



Hammer overview	
Can fit original bit shank	Mission60
Top Sub Thread	API 3 1/2" REG
Length (less bit)	1106mm(43.54in)
External diameter	148mm(5.83in)
Weight (less bit)	94kg (207.2lbs)
Impact rate at 17bar	30Hz
Hole range	165mm-190mm(6.50in-7.48in)
Working pressure	10-25bar(145-362.5psi)
Speed recommended	25-50rpm
Pull force recommended	9.0kN

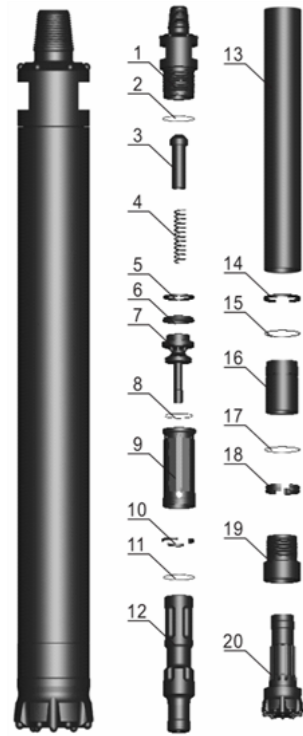
Parts List			
Item	Description	Weight (kg)	Part number
1	Top Sub	21.1	SC60K-M-01
2	"O" Ring of Top Sub	0.02	SC60K-M-02
3	Check Valve	0.7	SC60K-M-03
4	Spring	0.1	SC60K-M-04
5	Compression Buffer	0.2	SC60K-M-05
6	Air Distributor	4.6	SC60K-M-06
7	Internal Cylinder	3.4	SC60K-M-07
8	Piston	19.8	SC60K-M-08
9	External Cylinder	33	SC60K-M-09
10	Guided Sleeve	2.8	SC60K-M-10
11	Retaining Ring	0.02	SC60K-M-11
12	"O" Ring of Stop Ring	0.01	SC60K-M-12
13	Stop Ring	0.85	SC60K-M-13
14	Drive Chuck	7.15	SC60K-M-14
15	Drill Bit		



Bit specifications:

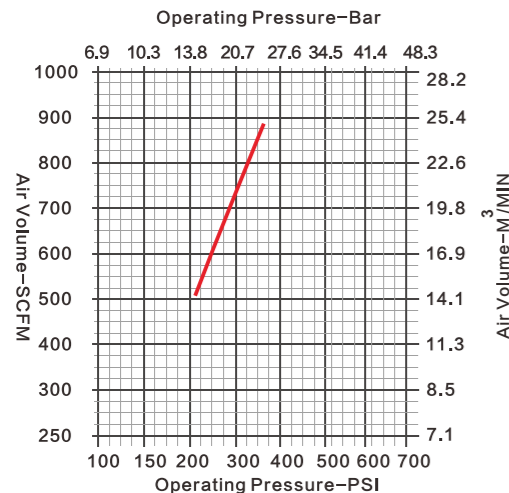
Diameter		Button configure Qty x dia.		Bit design	Weight (kg)	Part number
Metric	Inch	Gauge button	Front button			
165mm	6 1/2"	Φ18mm*8	Φ16mm*8	Flat face	21.6	SC60K-M-165FF
165mm	6 1/2"	Φ18mm*8	Φ16mm*4, Φ16mm*4	Convex face	21.4	SC60K-M-165CV
165mm	6 1/2"	Φ18mm*8	Φ16mm*6, Φ15mm*4	Concave face	21.1	SC60K-M-165CC
171mm	6 3/4"	Φ18mm*8	Φ16mm*6, Φ16mm*4	Concave face	21.8	SC60K-M-171-CC
178mm	7"	Φ18mm*8	Φ16mm*6, Φ16mm*4	Concave face	22.4	SC60K-M-178CC
190mm	7 1/2"	Φ18mm*10	Φ16mm*8, Φ16mm*5	Concave face	23.9	SC60K-M-190CC

SC60-MP Hammer & Bit



Hammer overview	
Can fit original bit shank	QL60 no footvalve
Top Sub Thread	API 3 1/2" REG
Length(less bit)	1205mm(47.44in)
External diameter	148mm(5.83in)
Weight(less bit)	109.2kg(240.74lbs)
Impact rate at 17 bar	27Hz
Hole range	165mm-190mm(6.50in-7.48in)
Working pressure	10-25bar(145-362.5psi)
Speed recommended	25-50rpm
Pull force recommended	9.5kN

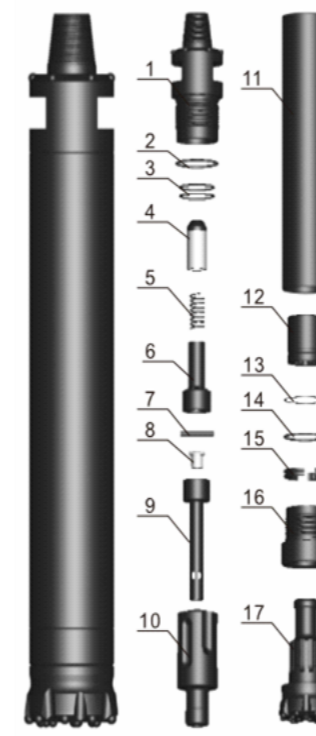
Parts List			
Item	Description	Weight (kg)	Part number
1	Top Sub	21.8	SC60-MP-01
2	"O" Ring of Top Sub	0.01	SC60-MP-02
3	Check Valve	0.4	SC60-MP-03
4	Spring	0.1	SC60-MP-04
5	Backup Ring	0.1	SC60-MP-05
6	Compression Buffer	0.2	SC60-MP-06
7	Air Distributor	4.05	SC60-MP-07
8	"O" Ring of Air Distributor	0.1	SC60-MP-08
9	Internal Cylinder	2.95	SC60-MP-09
10	Retaining Ring of Internal Cylinder	0.1	SC60-MP-10
11	"O" Ring of Retaining Ring	0.01	SC60-MP-11
12	Piston	21.7	SC60-MP-12
13	External Cylinder	45.75	SC60-MP-13
14	Retaining Ring	0.1	SC60-MP-14
15	"O" Ring of Guided Sleeve	0.01	SC60-MP-15
16	Guided Sleeve	4.5	SC60-MP-16
17	"O" Ring of Stop Ring	0.01	SC60-MP-17
18	Stop Ring	0.9	SC60-MP-18
19	Drive Chuck	6.45	SC60-MP-19
20	Drill Bit		



Bit specifications:

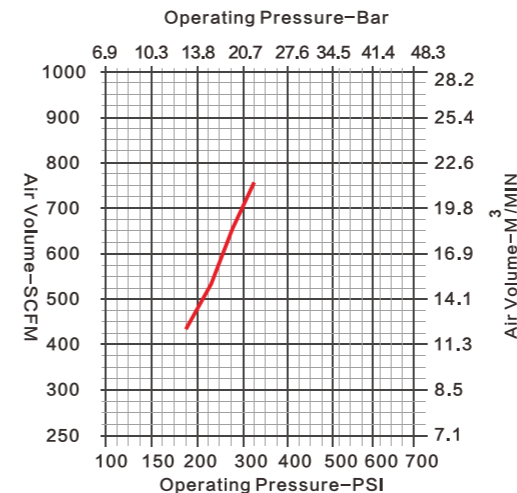
Diameter		Button configure Qty x dia.		Bit design	Weight (kg)	Part number
Metric	Inch	Gauge button	Front button			
165mm	6 1/2"	Φ18mm*8	Φ16mm*8	Flat face	23.8	SC60-MP-165FF
165mm	6 1/2"	Φ18mm*8	Φ16mm*4, Φ16mm*4	Convex face	23.6	SC60-MP-165CV
165mm	6 1/2"	Φ18mm*8	Φ16mm*4, Φ15mm*4	Concave face	23.3	SC60-MP-165CC
171mm	6 3/4"	Φ18mm*8	Φ16mm*6, Φ16mm*4	Concave face	24	SC60-MP-171CC
178mm	7"	Φ18mm*8	Φ16mm*6, Φ16mm*4	Concave face	24.6	SC60-MP-178CC
190mm	7 1/2"	Φ18mm*10	Φ16mm*8, Φ16mm*5	Concave face	26.1	SC60-MP-190CC

SC60F-M DTH Hammer & Bit



Hammer overview	
Can fit original bit shank	MISSION60
Top Sub Thread	API 3 1/2" Reg
Length (less bit)	1030 mm (40.55 in)
External diameter	148 mm (5.83 in)
Weight (less bit)	87 kg (192.1lbs)
Impact rate at 17bar	30 Hz
Hole range	165 mm-190 mm (6.5 in - 7.5 in)
Working pressure	10-25bar (145-362.5psi)
Speed recommended	25-50rpm
Pull force recommended	9.0 KN

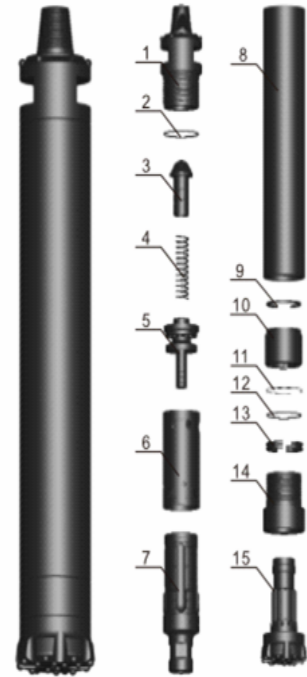
Parts List			
Item	Description	Weight (kg)	Part number
1	Top Sub	19.0	SC60F-M-01
2	O Ring Of Top Sub	0.01	SC60F-M-02
3	O Ring Of Top Sub	0.01	SC60F-M-03
4	Check Valve	0.25	SC60F-M-04
5	Spring	0.05	SC60F-M-05
6	Base Of Check Valve	0.60	SC60F-M-06
7	Pin	0.20	SC60F-M-07
8	Plunger	0.05	SC60F-M-08
9	Air Distributor	1.35	SC60F-M-09
10	Piston	18.8	SC60F-M-10
11	External Cylinder	32.3	SC60F-M-11
12	Guide Sleeve	6.30	SC60F-M-12
13	Retaining Ring	0.10	SC60F-M-13
14	O Ring Of Stop Ring	0.01	SC60F-M-14
15	Stop Ring	1.00	SC60F-M-15
16	Drive Chuck	6.40	SC60F-M-16
17	Drill Bit		



Bit specifications:

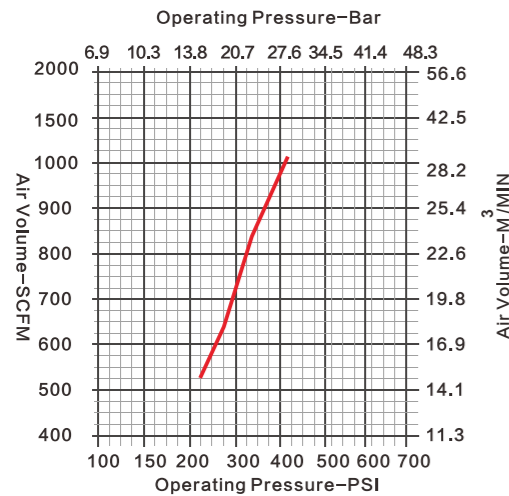
Diameter		Button configure Qty x dia.		Bit design	Weight (kg)	Part number
Metric	Inch	Gauge button	Front button			
165mm	6 1/2"	Φ18mm*8	Φ16mm*8	Flat face	21.6	SC60F-M-165FF
165mm	6 1/2"	Φ18mm*8	Φ16mm*4, Φ16mm*4	Convex face	21.4	SC60F-M-165CV
165mm	6 1/2"	Φ18mm*8	Φ16mm*6, Φ15mm*4	Concave face	21.1	SC60F-M-165CC
171mm	6 3/4"	Φ18mm*8	Φ16mm*6, Φ16mm*4	Concave face	21.8	SC60F-M-171CC
178mm	7"	Φ18mm*8	Φ16mm*6, Φ16mm*4	Concave face	22.4	SC60F-M-178CC
190mm	7 1/2"	Φ18mm*10	Φ16mm*8, Φ16mm*5	Concave face	23.9	SC60F-M-190CC

SC70K-QL DTH Hammer & Bit



Hammer overview	
Can fit original bit shank	QL60 (no footvalve)
Top Sub Thread	API 3 1/2" Reg
Length (less bit)	1191mm (46.89 in)
External diameter	165mm (6.5 in)
Weight (less bit)	132kg(291lbs)
Impact rate at 17bar	25 Hz
Hole range	178 mm-203 mm (7 in - 8 in)
Working pressure	10 - 25 bar (145 - 363 psi)
Speed recommended	20 -45 rpm
Pull force recommended	14 KN

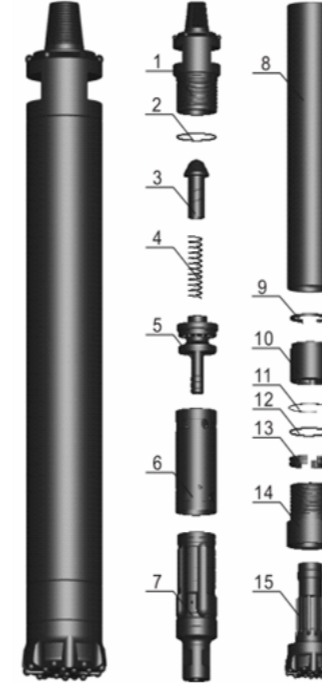
Parts List			
Item	Description	Weight (kg)	Part number
1	Top Sub	28.8	SC70K-QL-01
2	O Ring Of Top Sub	0.02	SC70K-QL-02
3	Check Valve	0.60	SC70K-QL-03
4	Spring	0.10	SC70K-QL-04
5	Air Distributor	4.70	SC70K-QL-05
6	Internal Cylinder	4.30	SC70K-QL-06
7	Piston	32.4	SC70K-QL-07
8	External Cylinder	41.9	SC70K-QL-08
9	Retaining Ring	0.20	SC70K-QL-09
10	Guide Sleeve	5.60	SC70K-QL-10
11	Retaining ring	0.10	SC70K-QL-11
12	O Ring Of Stop Ring	0.02	SC70K-QL-12
13	Stop Ring	1.30	SC70K-QL-13
14	Drive Chuck	12.5	SC70K-QL-14
15	Drill Bit		



Bit specifications:

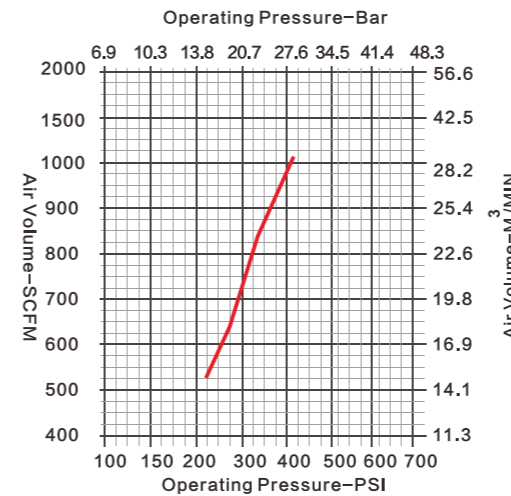
Diameter		Button configure Qty x dia.		Bit design	Weight (kg)	Part number
Metric	Inch	Gauge button	Front button			
178mm	7"	Φ18mm*8	Φ16mm*6, Φ16mm*4	Concave face	25.4	SC70K-QL-178CC
185mm	7 1/4"	Φ18mm*9	Φ16mm*6, Φ16mm*4	Concave face	26.0	SC70K-QL-185CC
190mm	7 1/2"	Φ18mm*10	Φ16mm*8, Φ16mm*5	Concave face	26.9	SC70K-QL-190CC
195mm	7 3/4"	Φ18mm*10	Φ16mm*8, Φ16mm*5	Concave face	27.5	SC70K-QL-195CC
200mm	7 7/8"	Φ18mm*10	Φ16mm*8, Φ16mm*5	Concave face	28.2	SC70K-QL-200CC
203mm	8"	Φ18mm*10	Φ16mm*8, Φ16mm*5	Concave face	28.7	SC70K-QL-203CC

SC70-DWELL DTH Hammer & Bit



Hammer overview	
Can fit original bit shank	QL60 (no footvalve)
Top Sub Thread	API 3 1/2" REG
Length (less bit)	1191mm (46.9lbs)
External diameter	165mm (6.5in)
Weight (less bit)	131kg(288.8lbs)
Impact rate at 17bar	25Hz
Hole range	178 mm-203 mm (7 in - 8 in)
Working pressure	10 - 25 bar (145 - 363psi)
Speed recommended	20 -45 rpm
Pull force recommended	14 KN

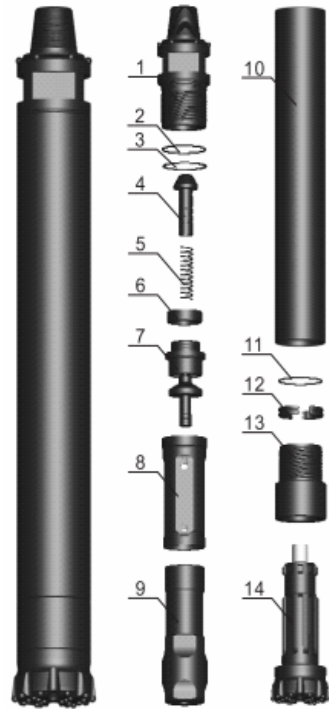
Parts List			
Item	Description	Weight (kg)	Part number
1	Top Sub	28.8	SC70-DWELL-01
2	O Ring Of Top Sub	0.02	SC70-DWELL-02
3	Check Valve	0.60	SC70-DWELL-03
4	Spring	0.10	SC70-DWELL-04
5	Air Distributor	4.70	SC70-DWELL-05
6	Internal Cylinder	4.30	SC70-DWELL-06
7	Piston	32.4	SC70-DWELL-07
8	External Cylinder	42.0	SC70-DWELL-08
9	Retaining Ring	0.20	SC70-DWELL-09
10	Guide Sleeve	5.60	SC70-DWELL-10
11	Retaining ring	0.10	SC70-DWELL-11
12	O Ring Of Stop Ring	0.02	SC70-DWELL-12
13	Stop Ring	1.30	SC70-DWELL-13
14	Drive Chuck	12.5	SC70-DWELL-14
15	Drill Bit		



Bit specifications:

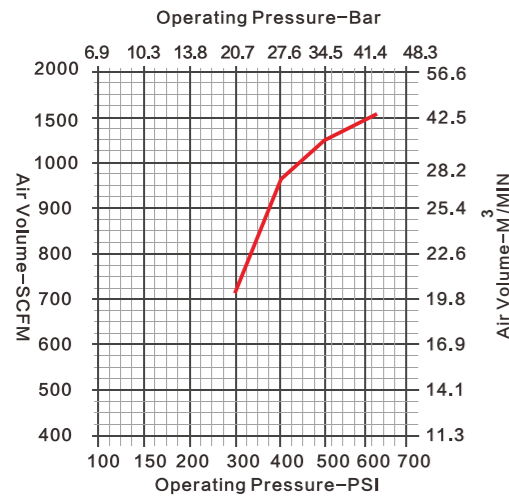
Diameter		Button configure Qty x dia.		Bit design	Weight (kg)	Part number
Metric	Inch	Gauge button	Front button			
178mm	7"	Φ18mm*8	Φ16mm*6, Φ16mm*4	Concave face	25.4	SC70-DWELL-178CC
185mm	7 1/4"	Φ18mm*9	Φ16mm*6, Φ16mm*4	Concave face	26.0	SC70-DWELL-185CC
190mm	7 1/2"	Φ18mm*10	Φ16mm*8, Φ16mm*5	Concave face	26.9	SC70-DWELL-190CC
195mm	7 3/4"	Φ18mm*10	Φ16mm*8, Φ16mm*5	Concave face	27.5	SC70-DWELL-195CC
200mm	7 7/8"	Φ18mm*10	Φ16mm*8, Φ16mm*5	Concave face	28.2	SC70-DWELL-200CC
203mm	8"	Φ18mm*10	Φ16mm*8, Φ16mm*5	Concave face	28.7	SC70-DWELL-203CC

SC80-DHD DTH Hammer & Bit



Hammer overview	
Can fit original bit shank	DHD380/COP84
Top Sub Thread	API 4 1/2" Reg
Length (less bit)	1492 mm (58.74 in)
External diameter	180 mm (7.09 in)
Weight (less bit)	188 kg (415lbs)
Impact rate at 17bar	20 Hz
Hole range	195 mm-254 mm (7.68 in - 10 in)
Working pressure	10 - 25 bar (145 - 363psi)
Speed recommended	20 - 45 rpm
Pull force recommended	19 KN

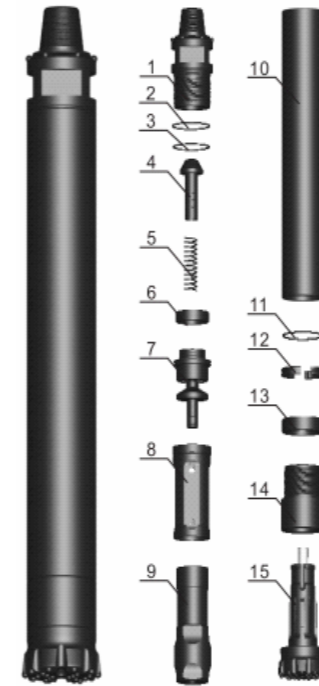
Parts List			
Item	Description	Weight (kg)	Part number
1	Top Sub	41.4	SC80-DHD-01
2	O Ring Of Top Sub	0.01	SC80-DHD-02
3	Breakout Ring Of Top Sub	0.30	SC80-DHD-03
4	Check Valve	1.30	SC80-DHD-04
5	Spring	0.20	SC80-DHD-05
6	Compression Buffer	0.46	SC80-DHD-06
7	Air Distributor	13.2	SC80-DHD-07
8	Internal Cylinder	8.40	SC80-DHD-08
9	Piston	41.7	SC80-DHD-09
10	External Cylinder	61.4	SC80-DHD-10
11	O Ring Of Stop Ring	0.01	SC80-DHD-11
12	Stop Ring	1.20	SC80-DHD-12
13	Drive Chuck	17.6	SC80-DHD-13
14	Drill Bit		



Bit specifications:

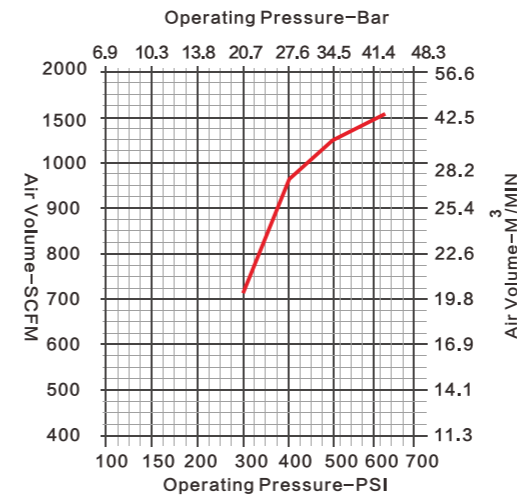
Diameter		Button configure Qty x dia.		Bit design	Weight (kg)	Part number
Metric	Inch	Gauge button	Front button			
203mm	8"	Φ18mm*10	Φ18mm*8, Φ16mm*5	Concave face	47.0	SC80-DHD-203CC
216mm	8 1/2"	Φ18mm*10	Φ18mm*8, Φ16mm*6	Concave face	51.2	SC80-DHD-216CC
219mm	8 5/8"	Φ18mm*10	Φ18mm*8, Φ16mm*6	Concave face	51.7	SC80-DHD-219CC
229mm	9"	Φ18mm*12	Φ16mm*12, Φ16mm*7	Concave face	53.3	SC80-DHD-229CC
235mm	9 1/4"	Φ18mm*12	Φ16mm*12, Φ16mm*7	Concave face	54.3	SC80-DHD-235CC
245mm	9 5/8"	Φ19mm*12	Φ16mm*12, Φ16mm*8	Concave face	58.4	SC80-DHD-245CC

SC80-SD DTH Hammer & Bit



Hammer overview	
Can fit original bit shank	SD8
Top Sub Thread	API 4 1/2" Reg
Length (less bit)	1463 mm (57.6 in)
External diameter	180 mm (7.09 in)
Weight (less bit)	192 kg (423.8lbs)
Impact rate at 17bar	20 Hz
Hole range	195 mm-254 mm (7.68 in - 10 in)
Working pressure	10 - 25 bar (145 - 363psi)
Speed recommended	20 - 45 rpm
Pull force recommended	19 KN

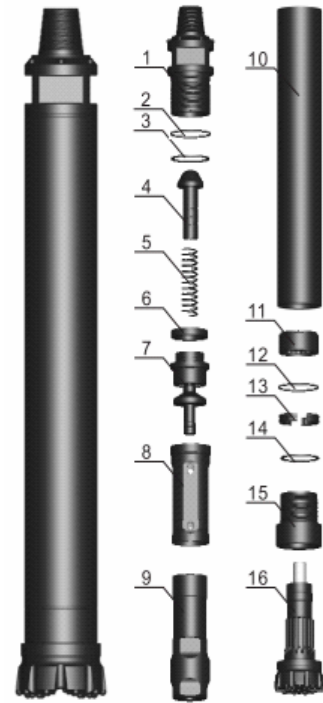
Parts List			
Item	Description	Weight (kg)	Part number
1	Top Sub	41.4	SC80-SD-01
2	O Ring of Top Sub	0.01	SC80-SD-02
3	Breakout Ring of Top Sub	0.30	SC80-SD-03
4	Check Valve	1.30	SC80-SD-04
5	Spring	0.20	SC80-SD-05
6	Compression Buffer	0.46	SC80-SD-06
7	Air Distributor	12.9	SC80-SD-07
8	Internal Cylinder	8.40	SC80-SD-08
9	Piston	43.4	SC80-SD-09
10	External Cylinder	62.5	SC80-SD-10
11	O Ring of Stop Ring	0.01	SC80-SD-11
12	Stop Ring	1.30	SC80-SD-12
13	Guided Sleeve	3.40	SC80-SD-13
14	Drive Chuck	16.1	SC80-SD-14
15	Drill Bit		



Bit specifications:

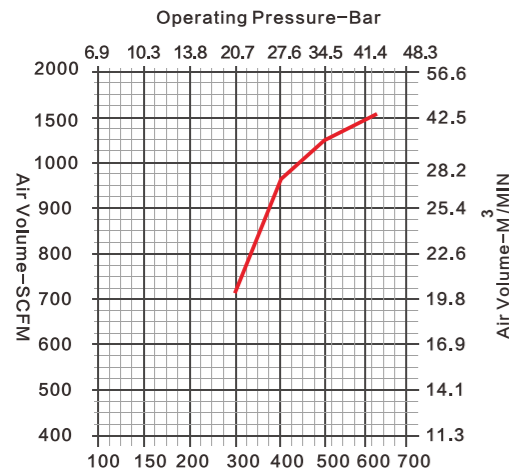
Diameter		Button configure Qty x dia.		Bit design	Weight (kg)	Part number
Metric	Inch	Gauge button	Front button			
203mm	8"	Φ18mm*10	Φ18mm*8, Φ16mm*5	Concave face	40.1	SC80-SD-203CC
216mm	8 1/2"	Φ18mm*10	Φ18mm*8, Φ16mm*6	Concave face	44.3	SC80-SD-216CC
219mm	8 5/8"	Φ18mm*10	Φ18mm*8, Φ16mm*6	Concave face	44.8	SC80-SD-219CC
229mm	9"	Φ18mm*12	Φ16mm*12, Φ16mm*7	Concave face	46.4	SC80-SD-229CC
235mm	9 1/4"	Φ18mm*12	Φ16mm*12, Φ16mm*7	Concave face	47.4	SC80-SD-235CC
245mm	9 5/8"	Φ19mm*12	Φ16mm*12, Φ16mm*8	Concave face	51.5	SC80-SD-245CC

SC80-QL DTH Hammer & Bit



Hammer overview	
Can fit original bit shank	QL80
Top Sub Thread	API 4 1/2" Reg
Length (less bit)	1471 mm (57.9 in)
External diameter	185 mm (7.28 in)
Weight (less bit)	203 kg (448.1lbs)
Impact rate at 17bar	20 Hz
Hole range	195 mm-254 mm (7.68 in - 10 in)
Working pressure	10 - 25 bar (145 - 363psi)
Speed recommended	20 -45 rpm
Pull force recommended	19 KN

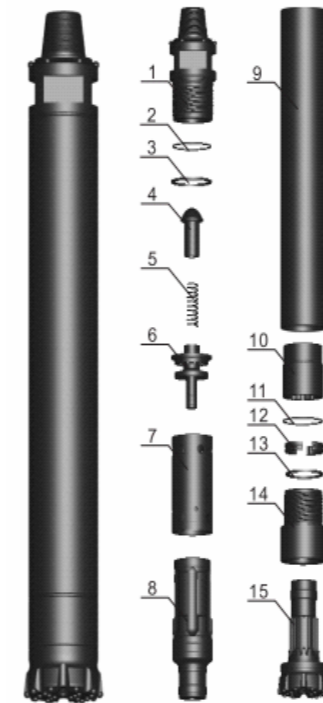
Parts List			
Item	Description	Weight (kg)	Part number
1	Top Sub	44.6	SC80-QL-01
2	O Ring Of Top Sub	0.01	SC80-QL-02
3	Breakout Ring Of Top Sub	0.30	SC80-QL-03
4	Check Valve	1.30	SC80-QL-04
5	Spring	0.20	SC80-QL-05
6	Compression Buffer	0.46	SC80-QL-06
7	Air Distributor	13.2	SC80-QL-07
8	Internal Cylinder	8.40	SC80-QL-08
9	Piston	41.5	SC80-QL-09
10	External Cylinder	74.1	SC80-QL-10
11	Guided Sleeve	3.70	SC80-QL-11
12	O Ring Of Stop Ring	0.01	SC80-QL-12
13	Stop Ring	1.20	SC80-QL-13
14	Breakout Ring Of Drive Chuck	0.35	SC80-QL-14
15	Drive Chuck	13.6	SC80-QL-15
16	Drill Bit		



Bit specifications:

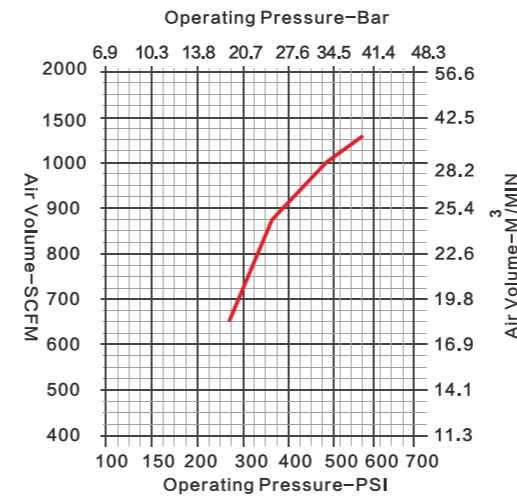
Diameter		Button configure Qty x dia.		Bit design	Weight (kg)	Part number
Metric	Inch	Gauge button	Front button			
203mm	8"	Φ18mm*10	Φ18mm*8, Φ16mm*5	Concave face	50.1	SC80-QL-203CC
216mm	8 1/2"	Φ18mm*10	Φ18mm*8, Φ16mm*6	Concave face	54.3	SC80-QL-216CC
219mm	8 5/8"	Φ18mm*10	Φ18mm*8, Φ16mm*6	Concave face	54.8	SC80-QL-219CC
229mm	9"	Φ18mm*12	Φ16mm*12, Φ16mm*7	Concave face	56.4	SC80-QL-229CC
235mm	9 1/4"	Φ18mm*12	Φ16mm*12, Φ16mm*7	Concave face	57.4	SC80-QL-235CC
245mm	9 5/8"	Φ19mm*12	Φ16mm*12, Φ16mm*8	Concave face	61.5	SC80-QL-245CC

SC80N-QL DTH Hammer & Bit



Hammer overview	
Can fit original bit shank	QL80 (no footvalve)
Top Sub Thread	API 4 1/2" Reg
Length (less bit)	1330 mm (52.4 in)
External diameter	185 mm (7.3 in)
Weight (less bit)	182 kg (401.8lbs)
Impact rate at 17bar	22 Hz
Hole range	195 mm-254 mm (7.68 in - 10 in)
Working pressure	10 - 30 bar (145 - 435psi)
Speed recommended	20 -45 rpm
Pull force recommended	18 KN

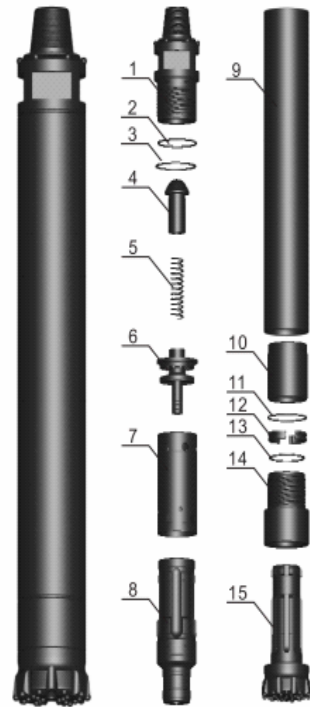
Parts List			
Item	Description	Weight (kg)	Part number
1	Top Sub	34.6	SC80N-QL-01
2	O Ring Of Top Sub	0.02	SC80N-QL-02
3	Breakout Ring Of Top Sub	0.35	SC80N-QL-03
4	Check Valve	0.90	SC80N-QL-04
5	Spring	0.10	SC80N-QL-05
6	Air Distributor	6.40	SC80N-QL-06
7	Internal Cylinder	6.30	SC80N-QL-07
8	Piston	42.5	SC80N-QL-08
9	External Cylinder	65.5	SC80N-QL-09
10	Guided Sleeve	10.0	SC80N-QL-10
11	O Ring Of Stop Ring	0.02	SC80N-QL-11
12	Stop Ring	1.20	SC80N-QL-12
13	Breakout Ring Of Drive Chuck	0.35	SC80N-QL-13
14	Drive Chuck	13.6	SC80N-QL-14
15	Drill Bit		



Bit specifications:

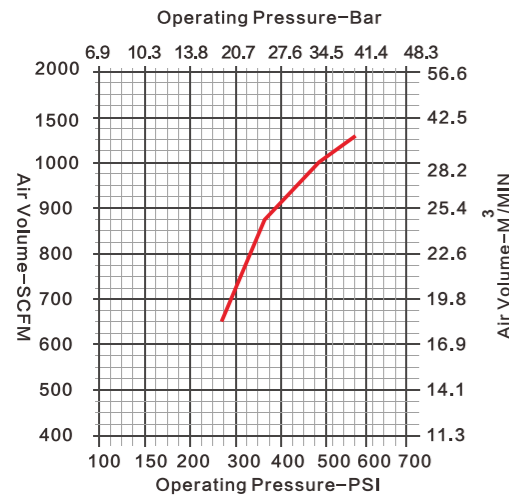
Diameter		Button configure Qty x dia.		Bit design	Weight (kg)	Part number
Metric	Inch	Gauge button	Front button			
203mm	8"	Φ18mm*10	Φ18mm*8, Φ16mm*5	Concave face	50	SC80-SD-203CC
216mm	8 1/2"	Φ18mm*10	Φ18mm*8, Φ16mm*6	Concave face	54	SC80-SD-216CC
219mm	8 5/8"	Φ18mm*10	Φ18mm*8, Φ16mm*6	Concave face	55	SC80-SD-219CC
229mm	9"	Φ18mm*12	Φ16mm*12, Φ16mm*7	Concave face	56	SC80-SD-229CC
235mm	9 1/4"	Φ18mm*12	Φ16mm*12, Φ16mm*7	Concave face	57	SC80-SD-235CC
245mm	9 5/8"	Φ19mm*12	Φ16mm*12, Φ16mm*8	Concave face	61.5	SC80-SD-245CC

SC80N-DHD DTH Hammer & Bit



Hammer overview	
Can fit original bit shank	DHD380/COP84 (no footvalve)
Top Sub Thread	API 4 1/2" Reg
Length (less bit)	1359 mm (53.5 in)
External diameter	185 mm (7.3 in)
Weight (less bit)	186.5 kg (411.7lbs)
Impact rate at 17bar	22 Hz
Hole range	195 mm-254 mm (7.68 in - 10 in)
Working pressure	10 - 25 bar (145 - 363psi)
Speed recommended	20 -45 rpm
Pull force recommended	18 KN

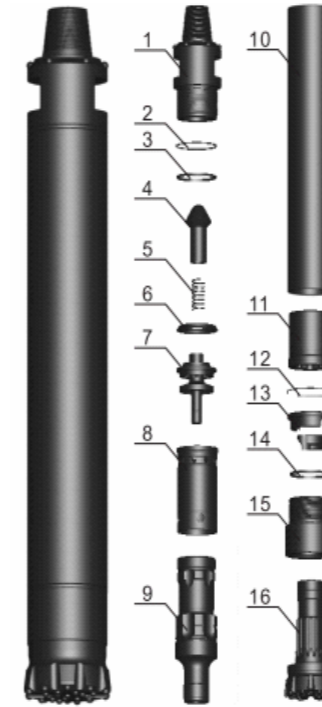
Parts List			
Item	Description	Weight (kg)	Part number
1	Top Sub	34.6	SC80N-DHD-01
2	O Ring Of Top Sub	0.01	SC80N-DHD-02
3	Breakout Ring Of Top Sub	0.01	SC80N-DHD-03
4	Check Valve	0.90	SC80N-DHD-04
5	Spring	0.20	SC80N-DHD-05
6	Air Distributor	6.30	SC80N-DHD-06
7	Internal Cylinder	6.80	SC80N-DHD-07
8	Piston	42.5	SC80N-DHD-08
9	External Cylinder	69.0	SC80N-DHD-09
10	Guided Sleeve	6.00	SC80N-DHD-10
11	O Ring Of Stop Ring	0.01	SC80N-DHD-11
12	Stop Ring	1.20	SC80N-DHD-12
13	Breakout Ring Of Drive Chuck	0.01	SC80N-DHD-13
14	Drive Chuck	18.9	SC80N-DHD-14
15	Drill Bit		



Bit specifications:

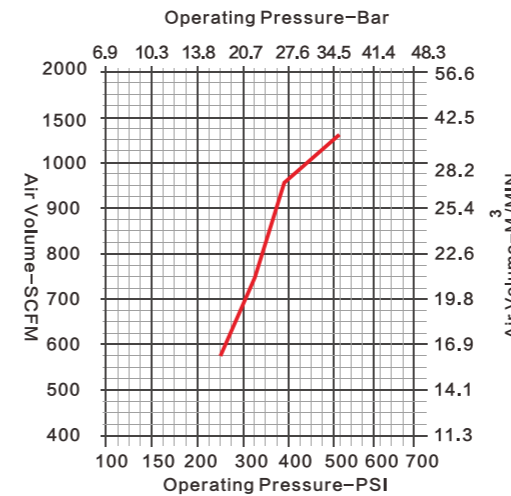
Diameter		Button configure Qty x dia.		Bit design	Weight (kg)	Part number
Metric	Inch	Gauge button	Front button			
203mm	8"	Φ18mm*10	Φ18mm*8, Φ16mm*5	Concave face	47.0	SC80N-DHD-203CC
216mm	8 1/2"	Φ18mm*10	Φ18mm*8, Φ16mm*6	Concave face	51.2	SC80N-DHD-216CC
219mm	8 5/8"	Φ18mm*10	Φ18mm*8, Φ16mm*6	Concave face	51.7	SC80N-DHD-219CC
229mm	9"	Φ18mm*12	Φ16mm*12, Φ16mm*7	Concave face	53.3	SC80N-DHD-229CC
235mm	9 1/4"	Φ18mm*12	Φ16mm*12, Φ16mm*7	Concave face	54.3	SC80N-DHD-235CC
245mm	9 5/8"	Φ19mm*12	Φ16mm*12, Φ16mm*8	Concave face	58.4	SC80N-DHD-245CC

SC80K-QL High penetration DTH Hammer & Bit



Hammer overview	
Can fit original bit shank	QL80 (no footvalve)
Top Sub Thread	API 4 1/2" Reg
Length (less bit)	1340 mm (52.76 in)
External diameter	185 mm (7.28 in)
Weight (less bit)	176.6 kg (389.8lbs)
Impact rate at 17bar	25 Hz
Hole range	195 mm-254 mm (7.68 in - 10 in)
Working pressure	10 - 25 bar (145 - 363psi)
Speed recommended	20 -45 rpm
Pull force recommended	17 KN

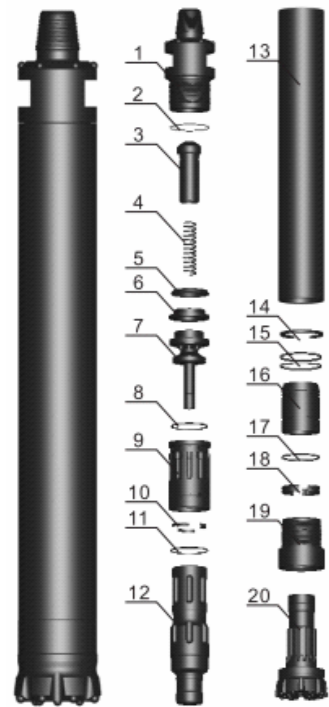
Parts List			
Item	Description	Weight (kg)	Part number
1	Top Sub	34.0	SC80K-QL-01
2	O Ring Of Top Sub	0.02	SC80K-QL-02
3	Breakout Ring Of Top Sub	0.50	SC80K-QL-03
4	Check Valve	0.68	SC80K-QL-04
5	Spring	0.10	SC80K-QL-05
6	Compression Buffer	0.50	SC80K-QL-06
7	Air Distributor	7.20	SC80K-QL-07
8	Internal Cylinder	5.10	SC80K-QL-08
9	Piston	38.0	SC80K-QL-09
10	External Cylinder	56.0	SC80K-QL-10
11	Guided Sleeve	5.30	SC80K-QL-11
12	Retaining Ring	0.20	SC80K-QL-12
13	Stop Ring	1.90	SC80K-QL-13
14	Breakout Ring Of Stop Ring	0.50	SC80K-QL-14
15	Drive Chuck	16.5	SC80K-QL-15
16	Drill Bit		



Bit specifications:

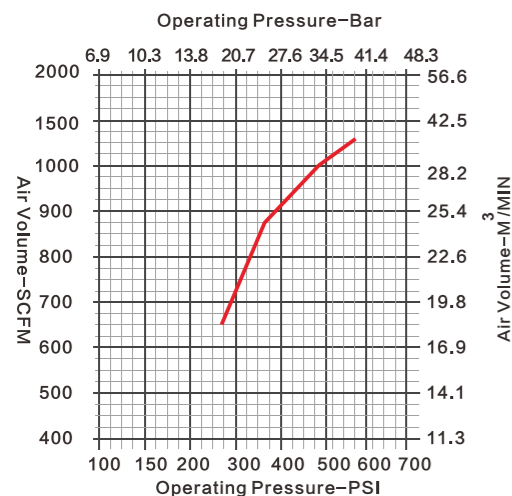
Diameter		Button configure Qty x dia.		Bit design	Weight (kg)	Part number
Metric	Inch	Gauge button	Front button			
203mm	8"	Φ18mm*10	Φ18mm*8, Φ16mm*5	Concave face	50.1	SC80K-QL-203CC
216mm	8 1/2"	Φ18mm*10	Φ18mm*8, Φ16mm*6	Concave face	54.3	SC80K-QL-216CC
219mm	8 5/8"	Φ18mm*10	Φ18mm*8, Φ16mm*6	Concave face	54.8	SC80K-QL-219CC
229mm	9"	Φ18mm*12	Φ16mm*12, Φ16mm*7	Concave face	56.4	SC80K-QL-229CC
235mm	9 1/4"	Φ18mm*12	Φ16mm*12, Φ16mm*7	Concave face	57.4	SC80K-QL-235CC
245mm	9 5/8"	Φ19mm*12	Φ16mm*12, Φ16mm*8	Concave face	61.5	SC80K-QL-245CC

SC80-MP Hammer & Bit



Hammer overview	
Can fit original bit shank	QL80 no footvalve
Top Sub Thread	API 4 1/2" Reg
Length(less bit)	1444.5 mm (56.87 in)
External diameter	186 mm (7.32 in)
Weight(less bit)	206kg(454.2lbs)
Impact rate at 17 bar	22 Hz
Hole range	195 mm-254 mm (7.68 in - 10 in)
Working pressure	10 - 25 bar (145 - 363psi)
Speed recommended	20 -45 rpm
Pull force recommended	18 KN

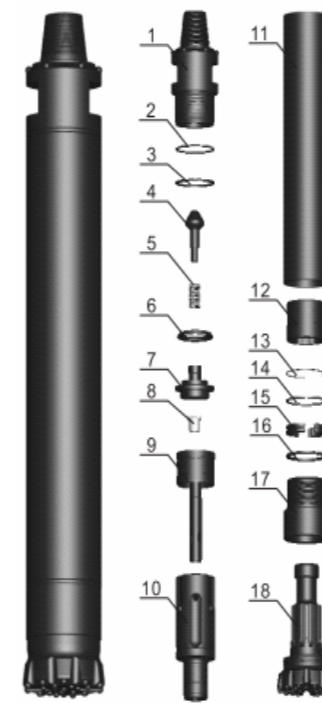
Parts List			
Item	Description	Weight (kg)	Part number
1	Top Sub	44.6	SC80-MP-01
2	O Ring Of Top Sub	0.01	SC80-MP-02
3	Check Valve	0.65	SC80-MP-03
4	Spring	0.05	SC80-MP-04
5	Compression Buffer	0.45	SC80-MP-05
6	Compression Buffer Seat	1.10	SC80-MP-06
7	Air Distributor	8.20	SC80-MP-07
8	O Ring Of Air Distributor	0.01	SC80-MP-08
9	Internal Cylinder	6.45	SC80-MP-09
10	Check Ring for Internal cylinder	0.40	SC80-MP-10
11	O Ring Of Check Ring	0.01	SC80-MP-11
12	Piston	46.0	SC80-MP-12
13	External Cylinder	76.4	SC80-MP-13
14	Retaining Ring	0.10	SC80-MP-14
15	O Ring Of Guaided Sleeve	0.01	SC80-MP-15
16	Guaided Sleeve	9.10	SC80-MP-16
17	O Ring Of Stop Ring	0.01	SC80-MP-17
18	Stop Ring	1.50	SC80-MP-18
19	Drive Chuck	12.4	SC80-MP-19
20	Drill Bit		



Bit specifications:

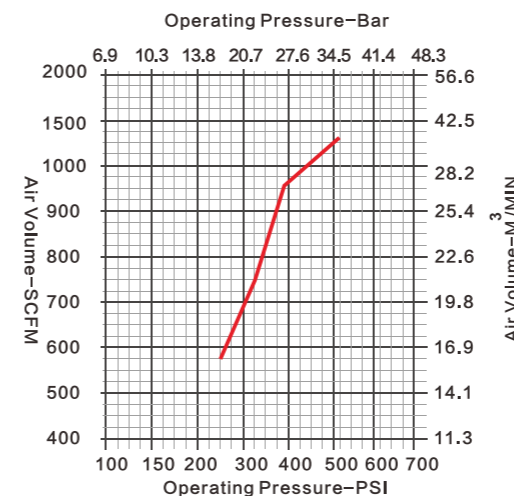
Diameter		Button configure Qty x dia.		Bit design	Weight (kg)	Part number
Metric	Inch	Gauge button	Front button			
203mm	8"	Φ18mm*10	Φ18mm*8, Φ16mm*5	Concave face	50.1	SC80-MP-203CC
216mm	8 1/2"	Φ18mm*10	Φ18mm*8, Φ16mm*6	Concave face	54.3	SC80-MP-216CC
219mm	8 5/8"	Φ18mm*10	Φ18mm*8, Φ16mm*6	Concave face	54.8	SC80-MP-219CC
229mm	9"	Φ18mm*12	Φ16mm*12, Φ16mm*7	Concave face	56.4	SC80-MP-229CC
235mm	9 1/4"	Φ18mm*12	Φ16mm*12, Φ16mm*7	Concave face	57.4	SC80-MP-235CC
245mm	9 5/8"	Φ19mm*12	Φ16mm*12, Φ16mm*8	Concave face	61.5	SC80-MP-245CC

SC80F-M DTH Hammer & Bit



Hammer overview	
Can fit original bit shank	MISSION80
Top Sub Thread	API 4 1/2" Reg
Length(less bit)	1307 mm (51.46 in)
External diameter	185 mm (7.28 in)
Weight(less bit)	184 kg (406.2lbs)
Impact rate at 17 bar	25 Hz
Hole range	195 mm-254 mm (7.68 in - 10 in)
Working pressure	10 - 25 bar (145 - 363psi)
Speed recommended	20 -45 rpm
Pull force recommended	17 KN

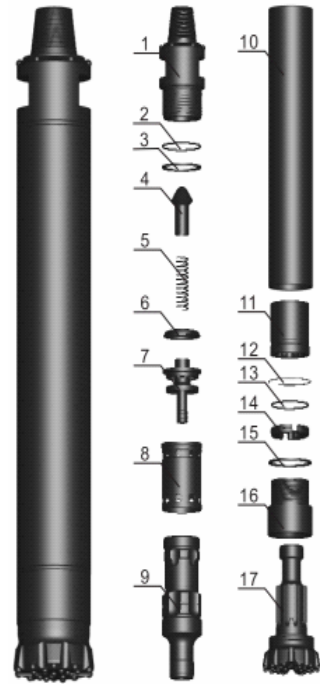
Parts List			
Item	Description	Weight (kg)	Part number
1	Top Sub	37.0	SC80F-M-01
2	O Ring Of Top Sub	0.02	SC80F-M-02
3	Breakout Ring Of Top Sub	0.50	SC80F-M-03
4	Check Valve	0.90	SC80F-M-04
5	Spring	0.10	SC80F-M-05
6	Compression Buffer	0.40	SC80F-M-06
7	Base Of Check Valve	4.70	SC80F-M-07
8	Pin	0.05	SC80F-M-08
9	Distributor Tube	4.00	SC80F-M-09
10	Piston	43.5	SC80F-M-10
11	External Cylinder	67.0	SC80F-M-11
12	Guided Sleeve	7.80	SC80F-M-12
13	Retaining Ring	0.20	SC80F-M-13
14	O Ring Of Stop Ring	0.02	SC80F-M-14
15	Stop Ring	1.30	SC80F-M-15
16	Breakout Ring Of Stop Ring	0.50	SC80F-M-16
17	Drive Chuck	15.5	SC80F-M-17
18	Drill Bit		



Bit specifications:

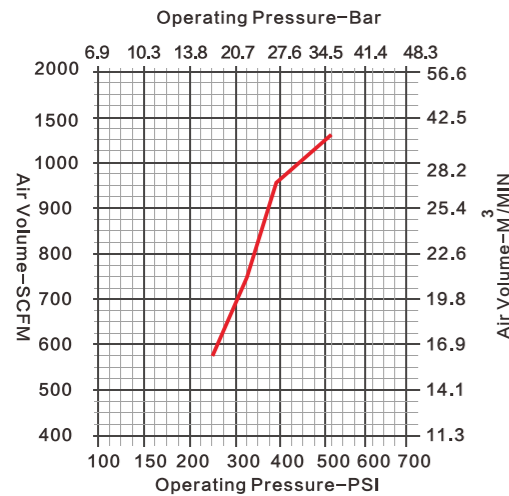
Diameter		Button configure Qty x dia.		Bit design	Weight (kg)	Part number
Metric	Inch	Gauge button	Front button			
203mm	8"	Φ18mm*10	Φ18mm*8, Φ16mm*5	Concave face	41.1	SC80F-M-203CC
216mm	8 1/2"	Φ18mm*10	Φ18mm*8, Φ16mm*6	Concave face	45.3	SC80F-M-216CC
219mm	8 5/8"	Φ18mm*10	Φ18mm*8, Φ16mm*6	Concave face	45.8	SC80F-M-219CC
229mm	9"	Φ18mm*12	Φ16mm*12, Φ16mm*7	Concave face	47.4	SC80F-M-229CC
235mm	9 1/4"	Φ18mm*12	Φ16mm*12, Φ16mm*7	Concave face	48.4	SC80F-M-235CC
245mm	9 5/8"	Φ19mm*12	Φ16mm*12, Φ16mm*8	Concave face	52.5	SC80F-M-245CC

SC80K-M DTH Hammer & Bit



Hammer overview		
Can fit original bit shank	MISSION80	
Top Sub Thread	API 4 1/2" Reg	
Length(less bit)	1345 mm (52.95 in)	
External diameter	185 mm (7.28 in)	
Weight(less bit)	186 kg (410.6lbs)	
Impact rate at 17 bar	25 Hz	
Hole range	195 mm-254 mm (7.68 in - 10 in)	
Working pressure	10 - 25 bar (145 - 363psi)	
Speed recommended	20 -45 rpm	
Pull force recommended	17 KN	

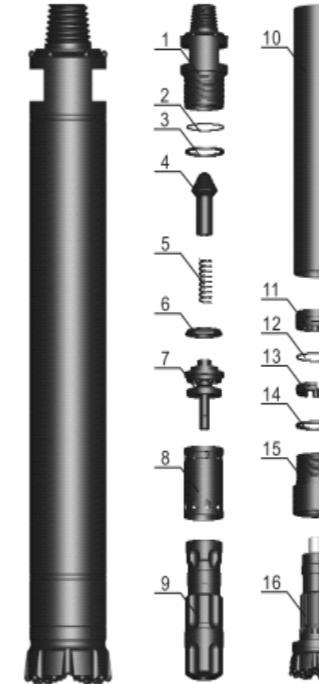
Parts List			
Item	Description	Weight (kg)	Part number
1	Top Sub	38.95	SC80K-M-01
2	O Ring Of Top Sub	0.01	SC80K-M-02
3	Breakout Ring Of Top Sub	0.30	SC80K-M-03
4	Check Valve	0.90	SC80K-M-04
5	Spring	0.20	SC80K-M-05
6	Compression Buffer	0.30	SC80K-M-06
7	Air Distributor	7.20	SC80K-M-07
8	Internal Cylinder	5.10	SC80K-M-08
9	Piston	38.5	SC80K-M-09
10	External Cylinder	64.2	SC80K-M-10
11	Guided Sleeve	8.10	SC80K-M-11
12	Retaining Ring	0.10	SC80K-M-12
13	O Ring Of Stop Ring	0.01	SC80K-M-13
14	Stop Ring	1.80	SC80K-M-14
15	Breakout Ring Of Stop Ring	0.30	SC80K-M-15
16	Drive Chuck	16.0	SC80K-M-16
17	Drill Bit		



Bit specifications:

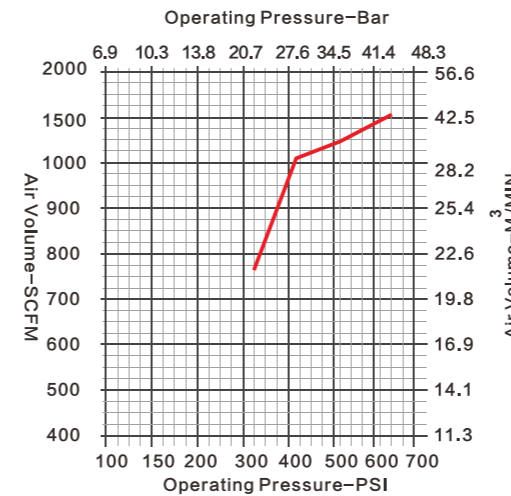
Diameter		Button configure Qty x dia.		Bit design	Weight (kg)	Part number
Metric	Inch	Gauge button	Front button			
203mm	8"	Φ18mm*10	Φ18mm*8, Φ16mm*5	Concave face	41.1	SC80K-M-203CC
216mm	8 1/2"	Φ18mm*10	Φ18mm*8, Φ16mm*6	Concave face	45.3	SC80K-M-216CC
219mm	8 5/8"	Φ18mm*10	Φ18mm*8, Φ16mm*6	Concave face	45.8	SC80K-M-219CC
229mm	9"	Φ18mm*12	Φ16mm*12, Φ16mm*7	Concave face	47.4	SC80K-M-229CC
235mm	9 1/4"	Φ18mm*12	Φ16mm*12, Φ16mm*7	Concave face	48.4	SC80K-M-235CC
245mm	9 5/8"	Φ19mm*12	Φ16mm*12, Φ16mm*8	Concave face	52.5	SC80K-M-245CC

SC90K-QL DTH Hammer & Bit



Hammer overview		
Can fit original bit shank	QL80	
Top Sub Thread	API 4 1/2" Reg	
Length (less bit)	1385 mm (54.53 in)	
External diameter	203 mm (8 in)	
Weight (less bit)	240 kg (529.8lbs)	
Impact rate at 17bar	20 Hz	
Hole range	216 mm-275 mm (8.5 in - 10.8 in)	
Working pressure	10 - 25 bar (145 - 363psi)	
Speed recommended	25 -45 rpm	
Pull force recommended	21 KN	

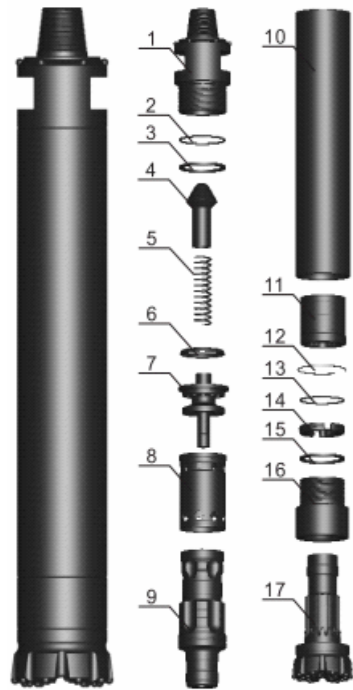
Parts List			
Item	Description	Weight (kg)	Part number
1	Top Sub	46.4	SC90K-QL-01
2	O Ring Of Top Sub	0.01	SC90K-QL-02
3	Breakout Ring Of Top Sub	0.40	SC90K-QL-03
4	Check Valve	1.30	SC90K-QL-04
5	Spring	0.20	SC90K-QL-05
6	Compression Buffer	0.30	SC90K-QL-06
7	Air Distributor	8.95	SC90K-QL-07
8	Internal Cylinder	7.40	SC90K-QL-08
9	Piston	57.5	SC90K-QL-09
10	External Cylinder	87.8	SC90K-QL-10
11	Guided Sleeve	4.30	SC90K-QL-11
12	O Ring Of Stop Ring	0.01	SC90K-QL-12
13	Stop Ring	2.10	SC90K-QL-13
14	Breakout Ring Of Stop Ring	0.40	SC90K-QL-14
15	Drive Chuck	22.8	SC90K-QL-15
16	Drill Bit		



Bit specifications:

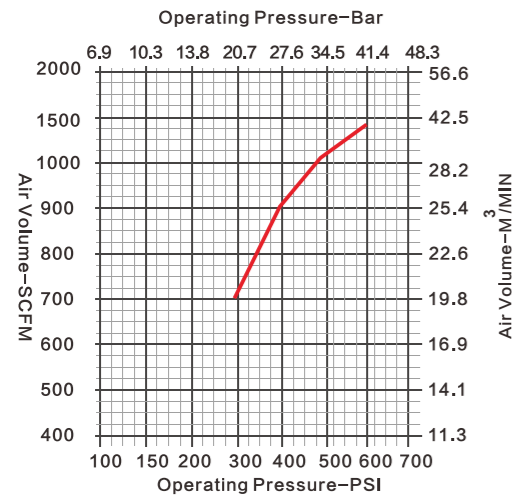
Diameter		Button configure Qty x dia.		Bit design	Weight (kg)	Part number
Metric	Inch	Gauge button	Front button			
216mm	8 1/2"	Φ18mm*10	Φ18mm*8, Φ16mm*6	Concave face	54.3	SC90K-QL-216CC
219mm	8 5/8"	Φ18mm*10	Φ18mm*8, Φ16mm*6	Concave face	54.8	SC90K-QL-219CC
229mm	9"	Φ18mm*12	Φ16mm*12, Φ16mm*7	Concave face	56.4	SC90K-QL-229CC
235mm	9 1/4"	Φ18mm*12	Φ16mm*12, Φ16mm*7	Concave face	57.4	SC90K-QL-235CC
245mm	9 5/8"	Φ19mm*12	Φ16mm*12, Φ16mm*8	Concave face	61.5	SC90K-QL-245CC
254mm	10"	Φ19mm*12	Φ16mm*12, Φ18mm*8, Φ16mm*6	Concave face	62.1	SC90K-QL-254CC

SC90NK-QL DTH Hammer & Bit



Hammer overview	
Can fit original bit shank	QL80 (no footvalve)
Top Sub Thread	API 4 1/2" Reg
Length(less bit)	1363 mm (53.66 in)
External diameter	203 mm (8 in)
Weight(less bit)	230 kg (507.7lbs)
Impact rate at 17 bar	25 Hz
Hole range	216 mm-275 mm (8.5 in - 10.8 in)
Working pressure	10 - 25 bar (145 - 363psi)
Speed recommended	25 -45 rpm
Pull force recommended	19 KN

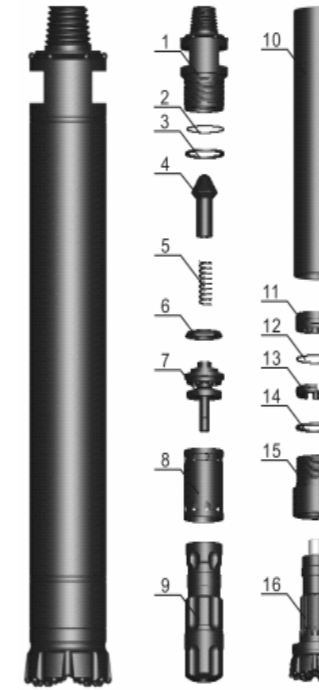
Parts List			
Item	Description	Weight (kg)	Part number
1	Top Sub	46.8	SC90NK-QL-01
2	O Ring Of Top Sub	0.01	SC90NK-QL-02
3	Breakout Ring Of Top Sub	1.30	SC90NK-QL-03
4	Check Valve	0.40	SC90NK-QL-04
5	Spring	0.20	SC90NK-QL-05
6	Compression Buffer	0.30	SC90NK-QL-06
7	Air Distributor	8.20	SC90NK-QL-07
8	Internal Cylinder	6.30	SC90NK-QL-08
9	Piston	48.1	SC90NK-QL-09
10	External Cylinder	79.1	SC90NK-QL-10
11	Guided Sleeve	12.9	SC90NK-QL-11
12	Retaining Ring	0.80	SC90NK-QL-12
13	O Ring Of Stop Ring	0.01	SC90NK-QL-13
14	Stop Ring	2.10	SC90NK-QL-14
15	Breakout Ring Of Stop Ring	0.40	SC90NK-QL-15
16	Drive Chuck	22.8	SC90NK-QL-16
17	Drill Bit		



Bit specifications:

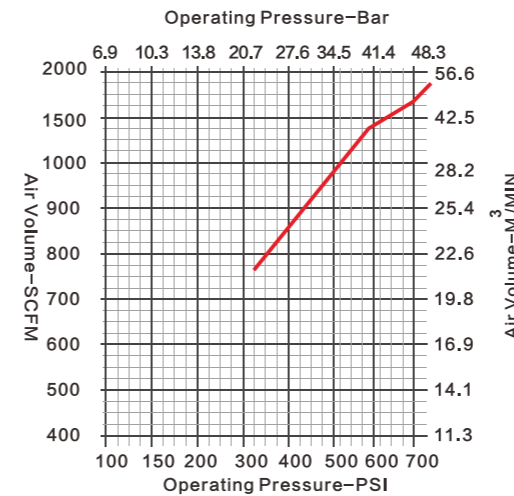
Diameter		Button configure Qty x dia.		Bit design	Weight (kg)	Part number
Metric	Inch	Gauge button	Front button			
216mm	8 1/2"	Φ18mm*10	Φ18mm*8, Φ16mm*6	Concave face	54.3	SC90NK-QL-216CC
219mm	8 5/8"	Φ18mm*10	Φ18mm*8, Φ16mm*6	Concave face	54.8	SC90NK-QL-219CC
229mm	9"	Φ18mm*12	Φ16mm*12, Φ16mm*7	Concave face	56.4	SC90NK-QL-229CC
235mm	9 1/4"	Φ18mm*12	Φ16mm*12, Φ16mm*7	Concave face	57.4	SC90NK-QL-235CC
245mm	9 5/8"	Φ19mm*12	Φ16mm*12, Φ16mm*8	Concave face	61.5	SC90NK-QL-245CC
254mm	10"	Φ19mm*12	Φ16mm*12, Φ18mm*8, Φ16mm*6	Concave face	62.1	SC90NK-QL-254CC

SC100-SD DTH Hammer & Bit



Hammer overview	
Can fit original bit shank	SD10
Top Sub Thread	API 4 1/2" Reg ; API 5 1/2" Reg
Length (less bit)	1413 mm (55.63 in)
External diameter	225 mm (8.86 in)
Weight (less bit)	303 kg (668.9lbs)
Impact rate at 17bar	20 Hz
Hole range	254 mm-305 mm (10 in - 12 in)
Working pressure	10 - 25 bar (145 - 363psi)
Speed recommended	15 -35 rpm
Pull force recommended	21 KN

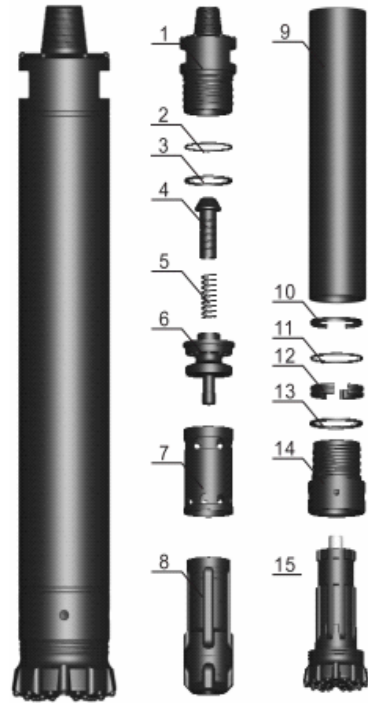
Parts List			
Item	Description	Weight (kg)	Part number
1	Top Sub	63.0	SC100-SD-01
2	O Ring Of Top Sub	0.05	SC100-SD-02
3	Breakout Ring Of Top Sub	1.20	SC100-SD-03
4	Check Valve	1.50	SC100-SD-04
5	Spring	0.20	SC100-SD-05
6	Air Distributor	13.0	SC100-SD-06
7	Internal Cylinder	13.6	SC100-SD-07
8	Piston	68.0	SC100-SD-08
9	External Cylinder	92.5	SC100-SD-09
10	Retaining Ring	0.60	SC100-SD-10
11	O Ring Of Stop Ring	0.05	SC100-SD-11
12	Stop Ring	2.80	SC100-SD-12
13	Guided Sleeve	5.00	SC100-SD-13
14	Breakout Ring Of Stop Ring	1.20	SC100-SD-14
15	Drive Chuck	23.5	SC100-SD-15
16	Drill Bit		



Bit specifications:

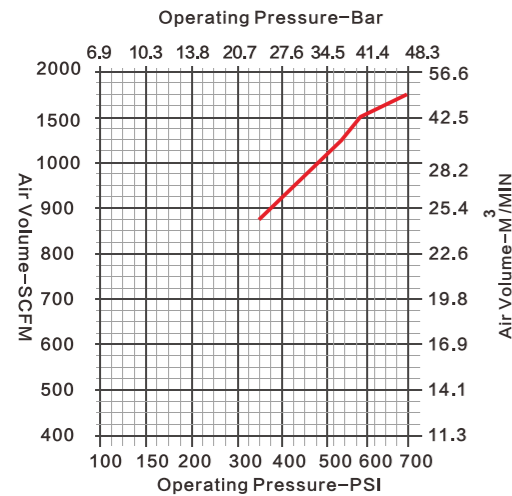
Diameter		Button configure Qty x dia.		Bit design	Weight (kg)	Part number
Metric	Inch	Gauge button	Front button			
254mm	10"	Φ19mm*12	Φ16mm*12, Φ18mm*8, Φ16mm*6	Concave face	82.1	SC100-SD-254CC
275mm	10 4/5"	Φ19mm*12	Φ16mm*12, Φ18mm*8, Φ16mm*8	Concave face	86.2	SC100-SD-275CC
305mm	12"	Φ19mm*15	Φ18mm*15, Φ18mm*12, Φ16mm*9	Concave face	98.7	SC100-SD-305CC

SC100-NUMA DTH Hammer & Bit



Hammer overview	
Can fit original bit shank	NUMA100
Top Sub Thread	API 4 1/2" Reg ; API 5 1/2" Reg
Length (less bit)	1441 mm (56.73 in)
External diameter	225 mm (8.86 in)
Weight (less bit)	308 kg (679.9lbs)
Impact rate at 17bar	20 Hz
Hole range	254 mm-305 mm (10 in - 12 in)
Working pressure	10 - 25 bar (145 - 363psi)
Speed recommended	15 -35 rpm
Pull force recommended	19 KN

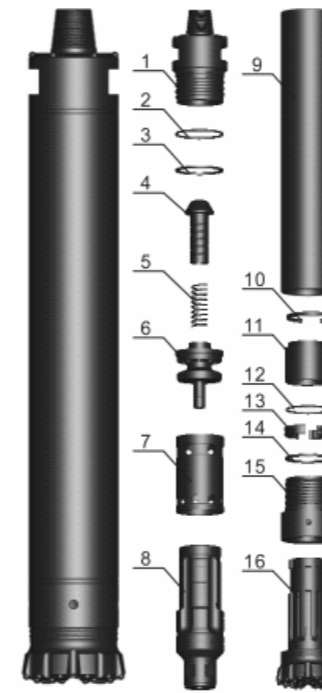
Parts List			
Item	Description	Weight (kg)	Part number
1	Top Sub	63.0	SC100-NUMA-01
2	O Ring Of Top Sub	0.05	SC100-NUMA-02
3	Breakout Ring Of Top Sub	1.20	SC100-NUMA-03
4	Check Valve	1.50	SC100-NUMA-04
5	Spring	0.20	SC100-NUMA-05
6	Air Distributor	13.0	SC100-NUMA-06
7	Internal Cylinder	13.6	SC100-NUMA-07
8	Piston	68.0	SC100-NUMA-08
9	External Cylinder	92.5	SC100-NUMA-09
10	Retaining Ring	0.60	SC100-NUMA-10
11	O Ring Of Stop Ring	0.05	SC100-NUMA-11
12	Stop Ring	2.80	SC100-NUMA-12
13	Breakout Ring Of Stop Ring	1.20	SC100-NUMA-13
14	Drive Chuck	28.5	SC100-NUMA-14
15	Drill Bit		



Bit specifications:

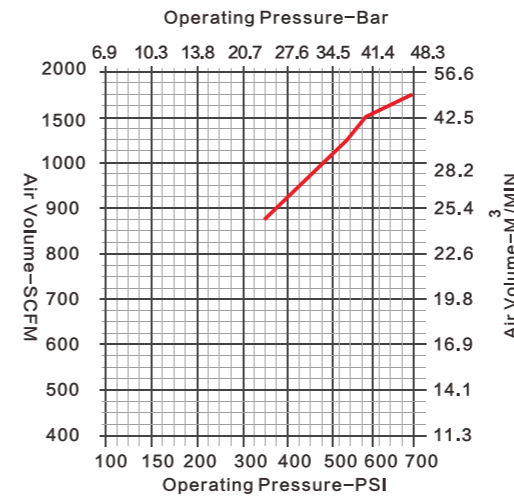
Diameter		Button configure Qty x dia.		Bit design	Weight (kg)	Part number
Metric	Inch	Gauge button	Front button			
254mm	10"	Φ19mm*12	Φ16mm*12, Φ18mm*8, Φ16mm*6	Concave face	88.4	SC100-NUMA-254CC
275mm	10 4/5"	Φ19mm*12	Φ16mm*12, Φ18mm*8, Φ16mm*8	Concave face	92.5	SC100-NUMA-275CC
305mm	12"	Φ19mm*15	Φ18mm*15, Φ18mm*12, Φ16mm*9	Concave face	105	SC100-NUMA-305CC

SC100-SD DTH Hammer & Bit



Hammer overview	
Can fit original bit shank	NUMA100 (no footvalve)
Top Sub Thread	API 4 1/2" Reg ; API 5 1/2" Reg
Length (less bit)	1536 mm (60.47 in)
External diameter	225 mm (8.86 in)
Weight (less bit)	307.5 kg (678.8lbs)
Impact rate at 17bar	22 Hz
Hole range	254 mm-305 mm (10 in - 12 in)
Working pressure	10 - 25 bar (145 - 363psi)
Speed recommended	20 -40 rpm
Pull force recommended	19 KN

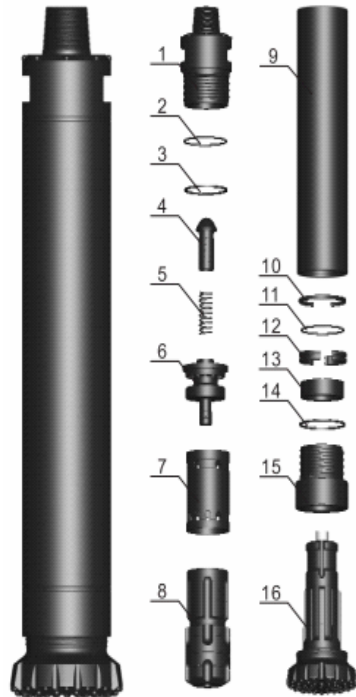
Parts List			
Item	Description	Weight (kg)	Part number
1	Top Sub	59.6	SC100N-NUMA-01
2	O Ring Of Top Sub	0.03	SC100N-NUMA-02
3	Breakout Ring Of Top Sub	1.20	SC100N-NUMA-03
4	Check Valve	1.50	SC100N-NUMA-04
5	Spring	0.20	SC100N-NUMA-05
6	Air Distributor	12.9	SC100N-NUMA-06
7	Internal Cylinder	13.6	SC100N-NUMA-07
8	Piston	77.5	SC100N-NUMA-08
9	External Cylinder	102	SC100N-NUMA-09
10	Retaining Ring	0.60	SC100N-NUMA-10
11	Guided Sleeve	9.60	SC100N-NUMA-11
12	O Ring Of Stop Ring	0.03	SC100N-NUMA-12
13	Stop Ring	2.30	SC100N-NUMA-13
14	Breakout Ring Of Stop Ring	1.20	SC100N-NUMA-14
15	Drive Chuck	25.5	SC100N-NUMA-15
16	Drill Bit		



Bit specifications:

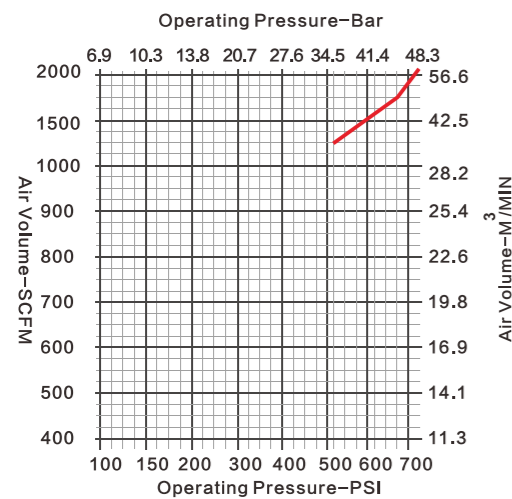
Diameter		Button configure Qty x dia.		Bit design	Weight (kg)	Part number
Metric	Inch	Gauge button	Front button			
254mm	10"	Φ19mm*12	Φ16mm*12, Φ18mm*8, Φ16mm*6	Concave face	88.4	SC100N-NUMA-254CC
275mm	10 4/5"	Φ19mm*12	Φ16mm*12, Φ18mm*8, Φ16mm*8	Concave face	92.5	SC100N-NUMA-275CC
305mm	12"	Φ19mm*15	Φ18mm*15, Φ18mm*12, Φ16mm*9	Concave face	105	SC100N-NUMA-305CC

SC120-SD DTH Hammer & Bit



Hammer overview	
Can fit original bit shank	SD12
Top Sub Thread	API 6 5/8" Reg
Length (less bit)	1680 mm (66.14 in)
External diameter	275 mm (10.83 in)
Weight (less bit)	526 kg (1161.1lbs)
Impact rate at 17bar	18 Hz
Hole range	305 mm- 445 mm (12 in - 17.5 in)
Working pressure	10 - 25 bar (145 - 363psi)
Speed recommended	15 - 35 rpm
Pull force recommended	28 KN

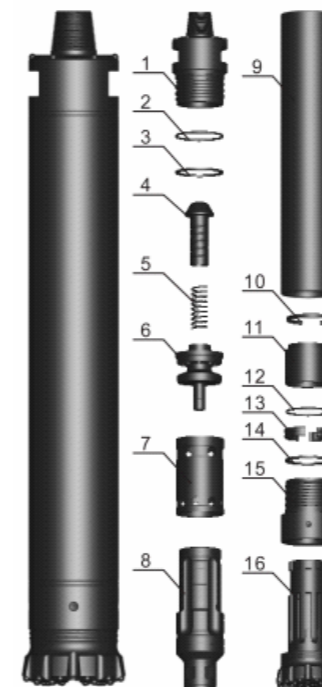
Parts List			
Item	Description	Weight (kg)	Part number
1	Top Sub	121.7	SC120-SD-01
2	O Ring Of Top Sub	0.02	SC120-SD-02
3	Breakout Ring Of Top Sub	2.10	SC120-SD-03
4	Check Valve	2.10	SC120-SD-04
5	Spring	0.20	SC120-SD-05
6	Air Distributor	20.2	SC120-SD-06
7	Internal Cylinder	31.3	SC120-SD-07
8	Piston	110	SC120-SD-08
9	External Cylinder	168.7	SC120-SD-09
10	Retaining Ring	1.20	SC120-SD-10
11	O Ring Of Stop Ring	0.02	SC120-SD-11
12	Stop Ring	5.20	SC120-SD-12
13	Guided Sleeve	9.90	SC120-SD-13
14	Breakout Ring Of Stop Ring	2.10	SC120-SD-14
15	Drive Chuck	50.9	SC120-SD-15
16	Drill Bit		



Bit specifications:

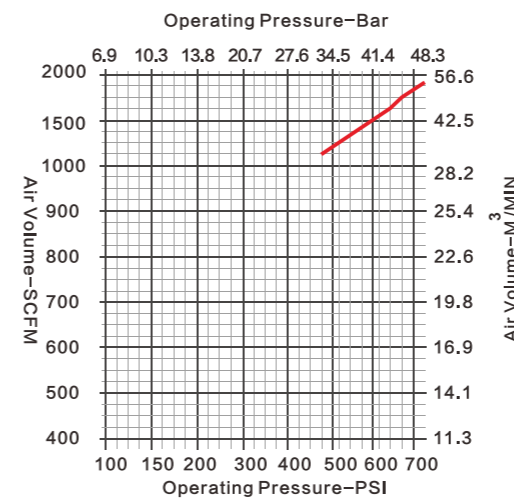
Diameter		Button configure Qty x dia.		Bit design	Weight (kg)	Part number
Metric	Inch	Gauge button	Front button			
305mm	12"	Φ18mm*27	Φ18mm*15, Φ16mm*11	Concave face	105	SC120-SD-305CC
315mm	12 3/8"	Φ18mm*27	Φ18mm*15, Φ16mm*12	Concave face	129	SC120-SD-315CC
325mm	12 4/5"	Φ18mm*27	Φ18mm*15, Φ16mm*15	Concave face	132	SC120-SD-325CC
350mm	13 3/4"	Φ18mm*27	Φ18mm*24, Φ16mm*12	Concave face	151	SC120-SD-350CC

SC125-NUMA DTH Hammer & Bit



Hammer overview	
Can fit original bit shank	NUMA125 (no footvalve)
Top Sub Thread	API 6 5/8" Reg
Length (less bit)	1956 mm (77 in)
External diameter	275 mm (10.83 in)
Weight (less bit)	578kg(1274.3lbs)
Impact rate at 17bar(reference)	20 Hz
Hole range	305 mm- 445 mm (12 in - 17.5 in)
Working pressure	10 - 25 bar (145 - 363psi)
Speed recommended	15 - 35 rpm
Pull force recommended	28 KN

Parts List			
Item	Description	Weight (kg)	Part number
1	Top Sub	136	SC125-NUMA-01
2	O Ring Of Top Sub	0.30	SC125-NUMA-02
3	Breakout Ring Of Top Sub	0.85	SC125-NUMA-03
4	Check Valve	2.10	SC125-NUMA-04
5	Spring	0.20	SC125-NUMA-05
6	Air Distributor	21.7	SC125-NUMA-06
7	Internal Cylinder	25.5	SC125-NUMA-07
8	Piston	116	SC125-NUMA-08
9	External Cylinder	184	SC125-NUMA-09
10	Guided Sleeve	23.8	SC125-NUMA-10
11	O Ring Of Stop Ring	0.03	SC125-NUMA-11
12	Stop Ring	5.10	SC125-NUMA-12
13	Breakout Ring Of Stop Ring	0.85	SC125-NUMA-13
14	Retainer	22.7	SC125-NUMA-14
15	Drive Chuck	39.7	SC125-NUMA-15
16	Drill Bit		



Bit specifications:

Diameter		Button configure Qty x dia.		Bit design	Weight (kg)	Part number
Metric	Inch	Gauge button	Front button			
305mm	12"	Φ18mm*27	Φ18mm*15, Φ16mm*11	Concave face	182	SC125-NUMA-305CC
315mm	12 3/8"	Φ18mm*27	Φ18mm*15, Φ16mm*12	Concave face	206	SC125-NUMA-315CC
325mm	12 4/5"	Φ18mm*27	Φ18mm*15, Φ16mm*15	Concave face	209	SC125-NUMA-325CC
350mm	13 3/4"	Φ18mm*27	Φ18mm*24, Φ16mm*12	Concave face	228	SC125-NUMA-350CC